

## Potterton Suprima HE Range >>

### Contacts

General Enquiries  
Tel: **08706 06 07 80**

Technical Information  
Tel: **08706 049 049**

Service  
Tel: **08706 017 017**  
Fax: **01926 410 006**

Literature Request  
Tel: **08706 06 06 23**

Please note - calls to the contact centre may be recorded or monitored



This Brochure is printed on paper made from trees grown in a sustainable forest. It is 100% recyclable and conforms to ISO 14001 Environmental Certification. The inks used to print this document are soya based, which are 100% recyclable and significantly more environmentally friendly than traditional solvent based inks.



\*Main\* supports



The code of practice for the installation, commissioning & servicing of central heating systems.



FM35908  
BSEN ISO 9001  
QUALITY MANAGEMENT  
SYSTEM STANDARD



The Potterton Suprima HE Range has an energy rating B on a scale of A to G. For more information see [www.boilers.org.uk](http://www.boilers.org.uk). This is a certification mark.

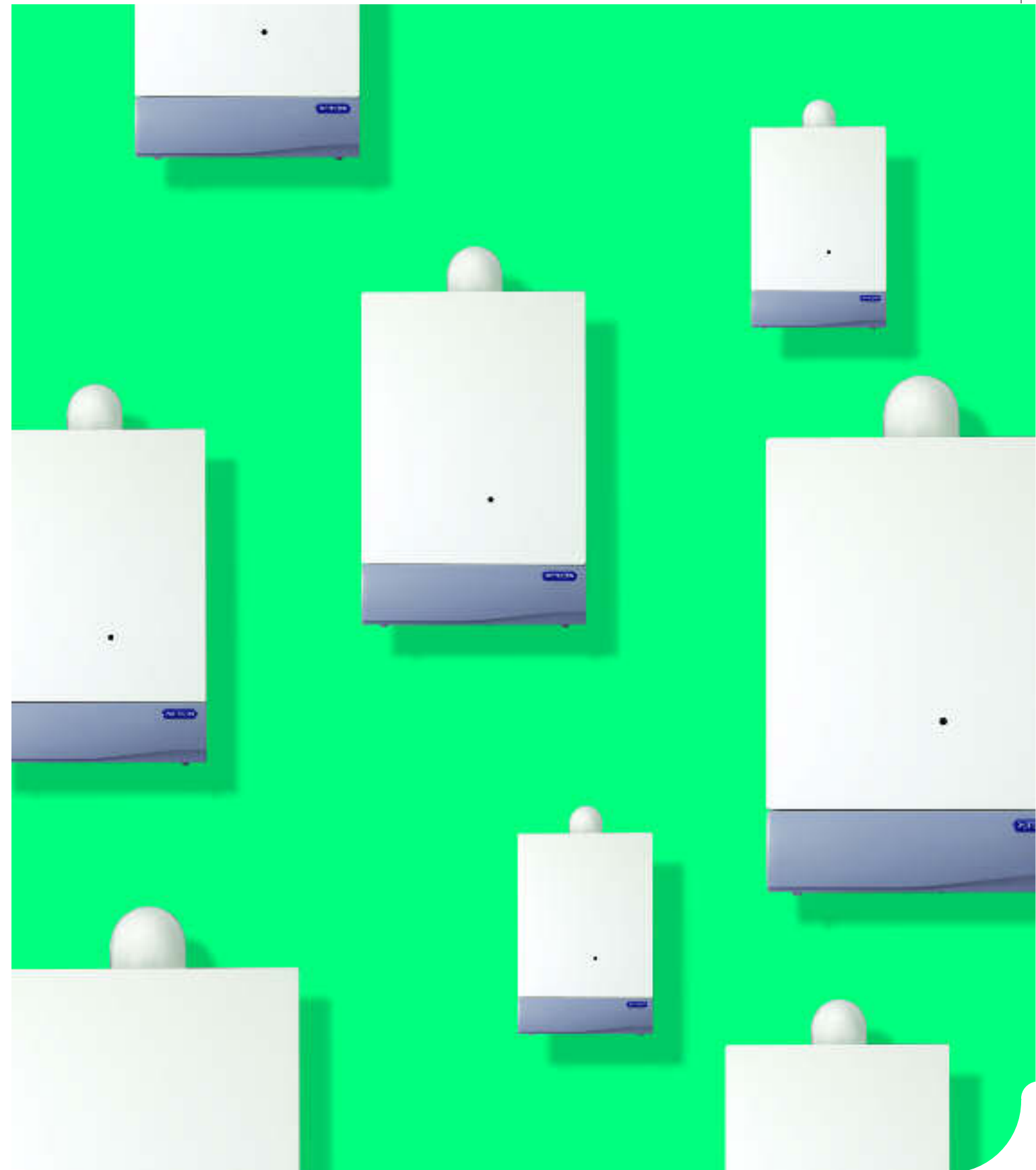
Potterton  
A trading Division of Baxi Heating UK Ltd,  
A division of Baxi Group  
Brookside House, Coventry Road,  
Warwick CV34 4LL  
Website [www.potterton.co.uk](http://www.potterton.co.uk)

Potterton policy is one of continual improvement and development.  
The right to change specification and appearance without prior notice is reserved. The reproduction of colours is as accurate as photographic and printing processes allow.  
The consumer's statutory rights are not affected.

e8oe

SUPHE/5113250/5786/0607/V3

You can rely on **POTTERTON**



Potterton Suprima HE Range >>

You can rely on **POTTERTON**

# Suprima HE. The range that's reassuringly familiar>>

Over the past 150 years, the Potterton name has become synonymous with top quality, high specification products. With well over 5 million boilers produced to date, we're consistently leading the way with the most advanced range of energy efficient, user friendly, environmentally friendly products on the market. But although we're one of the heating industry's leading innovators, we don't believe in change for change's sake. So when we set out to create the Suprima HE, our primary aim was to retain many of the elements which made its predecessor Britain's most popular wall mounted cast iron boiler, whilst embracing new high efficiency legislation. The result is a range of boilers which combines the very best elements of the Suprima L, with some ingenious new high efficiency modifications.

## Contents>>

Introduction	page 2
Range overview	page 3
Range descriptions	page 4
Diagrams	page 6
Flue details	page 7
Technical spec	page 10
Accessories	page 11
Contacts	page 12

## Suprima HE. Britain's best loved boiler just got even better.

The Suprima L was renowned for its unsurpassed range of outputs, low lift weight, compact dimensions, extensive flue options and unparalleled technology. And one look at the internal layout of the Suprima HE range will tell you that we've remained true to this popular design. Of primary interest will be the way we've added a cast aluminium secondary heat exchanger. Neatly sited to the right of the primary heat exchanger, with the electrical side of things conveniently re-housed below, it means that Suprima HE remains every inch a compact heating solution for the 21st Century.

## Eight outputs. One technology platform.

Like its predecessor, the new Suprima HE range is available in six outputs, from 30,000 Btu/h to 80,000 Btu/h. All boilers feature the same basic architecture. So once you're familiar with the layout of one, you know them all, with flue components being universal across the range.

## Unrivalled spares and service back up.

When it comes to high efficiency, nobody's more highly qualified than Potterton. The Suprima HE comes with the finest technical back up and widest spares network in the industry. **heateam** is the largest service operation in the country, supported by dedicated teams of Call Centre support staff operating seven days a week, 363 days per year. And to make life even easier, training is available on the finer points of installing and servicing the Suprima HE range.



## The range with all the outputs you need now has the high efficiency you need.

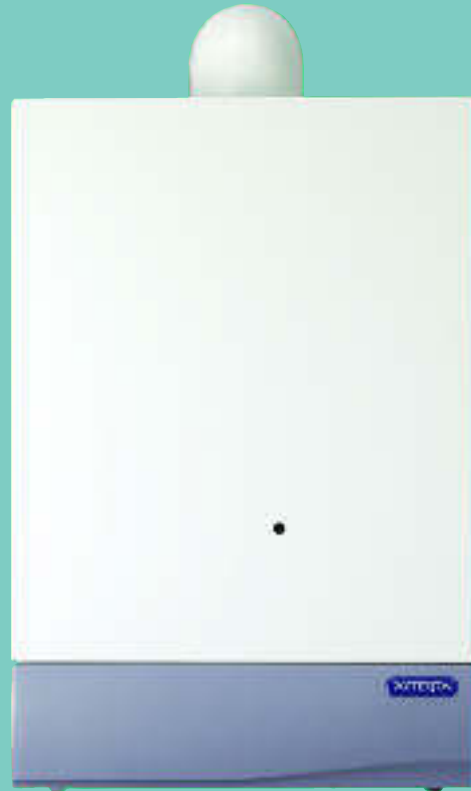
As you'd expect, all the boilers in the Potterton Suprima HE range meet the requirements of impending energy efficiency legislation. They've all been put through their high efficiency paces and rigorously tested at our new Product Design Centre. What's more, they'll also meet the requirements of all your customers, from the Suprima 30 HE right up to the 80 HE. So whatever the size of property, from a starter home to an executive penthouse, there's a Suprima HE that's supremely well suited to the task.



## Key benefits>>

- Familiar general layout. Same outputs. Same cast iron reliability.
- Tried and tested Potterton technology.
- Six models to cover every possible output requirement.
- Know one, know them all.
- Designed to meet the 2005 change in energy efficiency legislation.
- Backed by the best service network in the business.

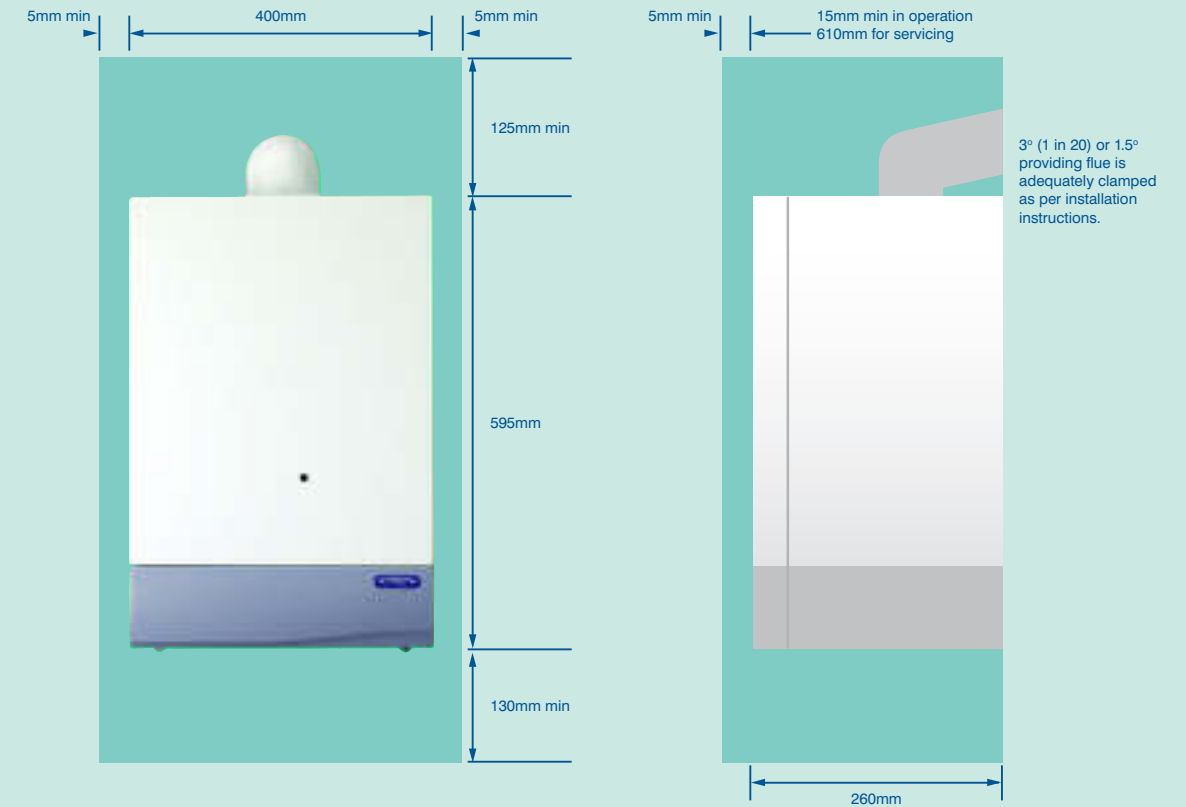
# The complete range >>



## Additional information >>

- Six models to suit most domestic applications
- Outputs from 30,000 Btu/h to 80,000 Btu/h
- SEDBUK Band B energy rating
- Robust cast iron and aluminium heat exchangers
- One size case
- Compact dimensions
- Minimal installation clearances
- Low lift weights
- Simple user interface
- Push fit concentric & twin pipe flue systems
- Horizontal & vertical flue terminals
- Comprehensive flue accessories
- Flow & return locations compatible with standard efficiency Suprima
- Optional integral 7 day twin channel programmer
- Optional stand-off kit for descending flow & return

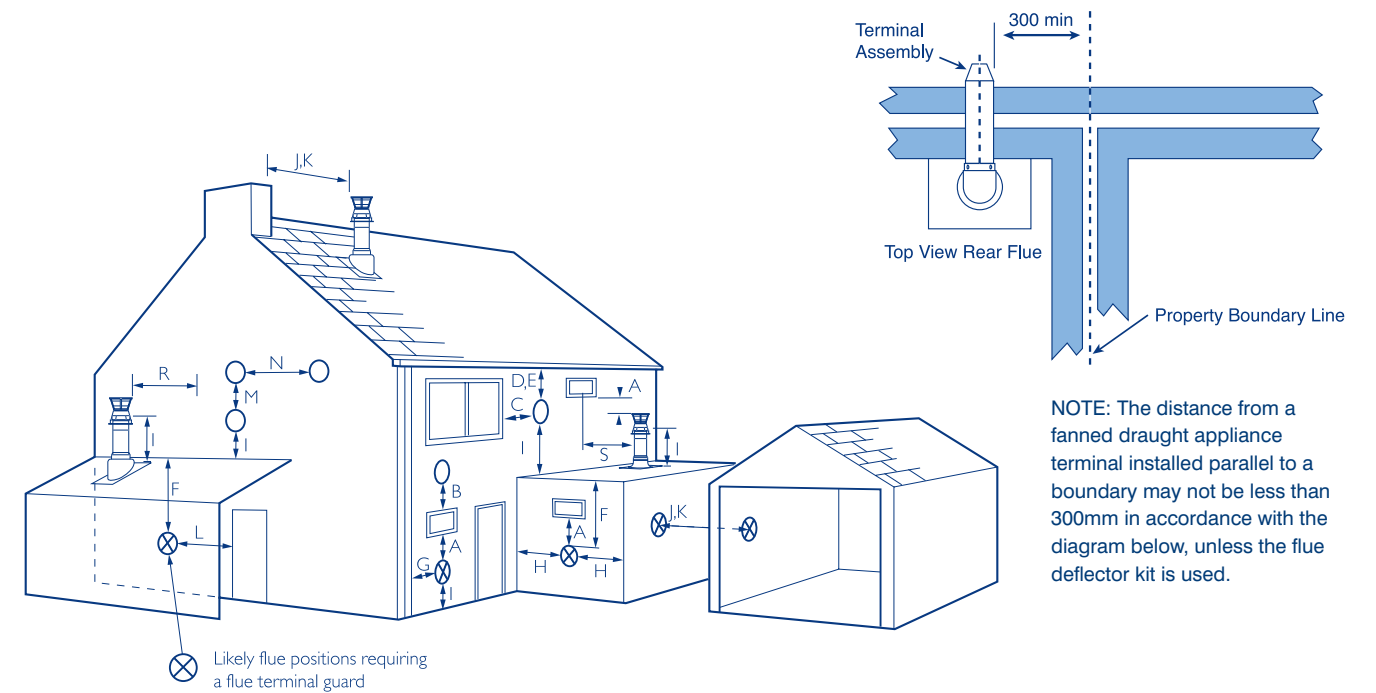
## Dimensions and minimum clearance mm



### Terminal Position with Minimum Distance

	(mm)
A* Directly below an opening, air brick, opening windows etc.	300
B* Above an opening, air brick, opening window etc.	300
C* Horizontally to an opening, air brick, opening window etc.	300
D Below gutters, soil pipes or drain pipes.	150
E Below eaves.	200
F Below balconies or carport roof.	200
G From a vertical drain pipe or soil pipe.	150
H From an internal (i) or external (ii) corner.	300
I Above ground, roof or balcony level.	300
J From a surface or boundary line facing a terminal.	600
K From a terminal facing a terminal (horizontal flue). From a terminal facing a terminal (vertical flue).	1200 600
L From an opening in carport (e.g. door, window) into the dwelling.	1200
M Vertically from a terminal on the same wall.	1500
N Horizontally from a terminal on the same wall.	300
R From adjacent wall to flue (vertical only).	300
S From an adjacent opening window (vertical only).	1000

Reduced clearances This range of boilers has been tested and approved for use with certain clearances less than those shown. Horizontal flues in positions D, E, F, G & H(i) may be reduced to 25mm. H(ii) may only be reduced to 115mm. Only one of these reductions may be used on a single installation.



# The inside view>>



## Flues, fittings & Accessories

### Flue options

The Potterton Suprima HE can be fitted with flue systems as illustrated.

The standard flue is suitable only for horizontal termination applications.

Maximum permissible equivalent flue lengths are:-

Horizontal Concentric	4 metres
Vertical Concentric	4 metres
Vertical Twin Pipe	10 metres

Any additional 'in line' bends in the flue system must be taken into consideration.

Their equivalent lengths are:-

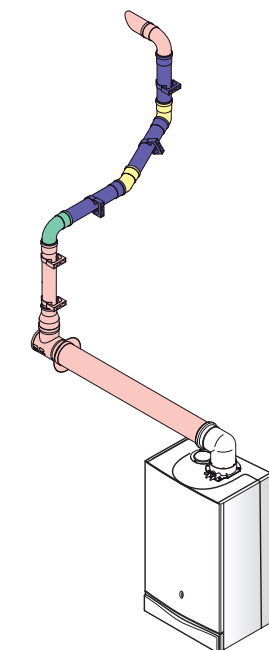
Concentric Pipes:	135° bend	0.5 metre
	93° bend	1.0 metre
Twin Flue Pipe:	135° bend	0.25 metre
	91.5° bend	0.50 metre

The elbow supplied with the boiler is not included in any equivalent length calculations.

The illustrations below and opposite show examples of permissible flue systems.

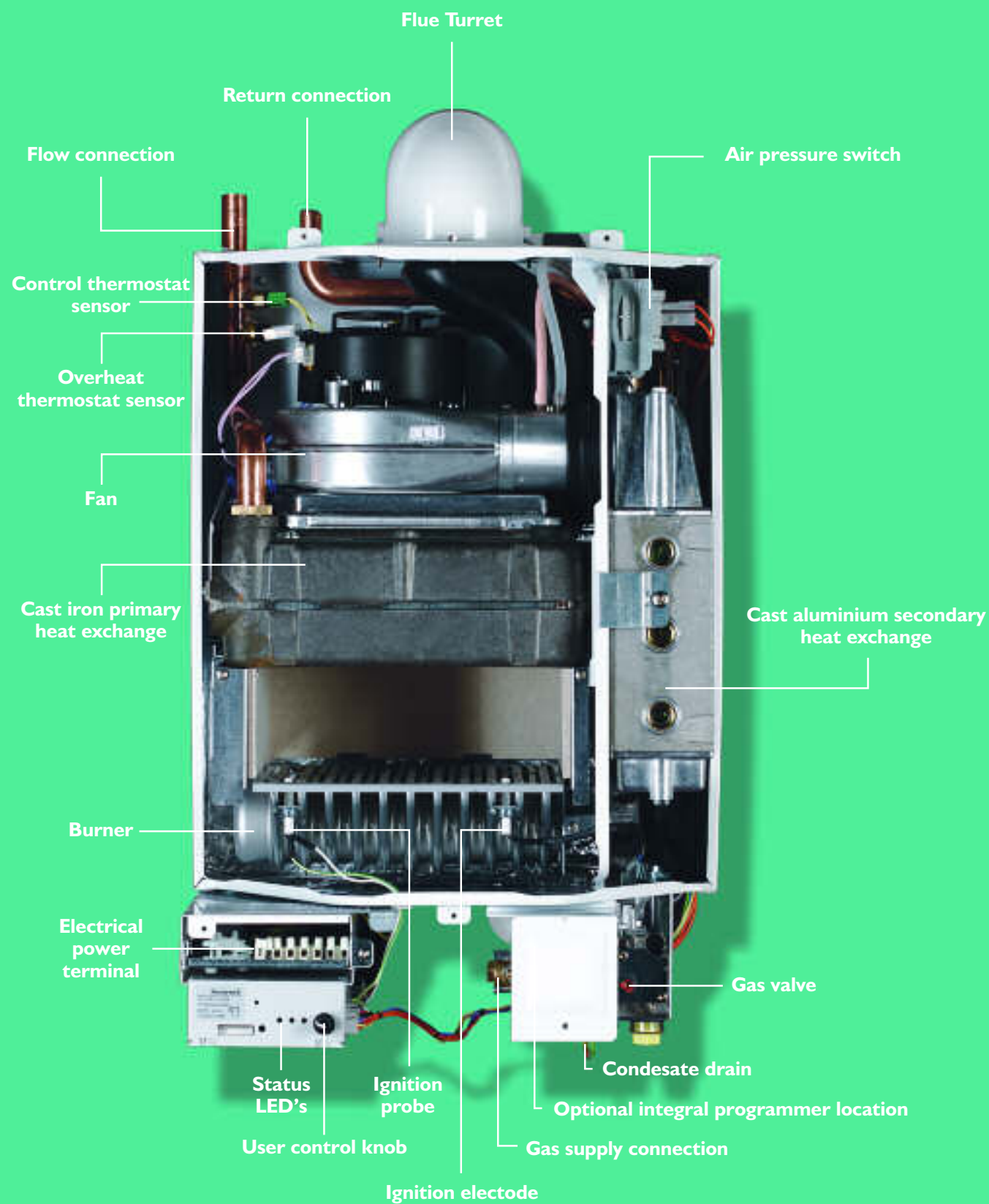
Instructions for guidance and fitting are included in each kit, where appropriate.

### Plume Displacement Kits 60/100mm to 60mm PDK



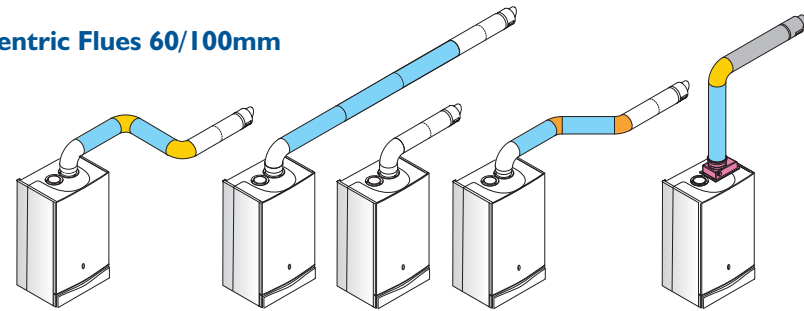
Item Description (MULTIFIT) Flue System K	Specification	Key & OD Dimensions	Baxi/Potterton Sales Code	'Potterton' Sales Code	Multifit Sales Code
Plume Displacement Kit inc Elbow & clips*		100mm		5117379	5118638
Plume Displacement Kit Extension inc clip	1000mm	60mm		5117380	5121368
Plume Displacement Kit Bend	93 degree	60mm		5117381	5121369
Plume Displacement Kit Bend (Pair)	135 degree	60mm		5117382	5121370

\*Elbow supplied not suitable for the Suprima HE - please use the elbow supplied with the appliance.



## Suprima HE range

### Horizontal Concentric Flues 60/100mm

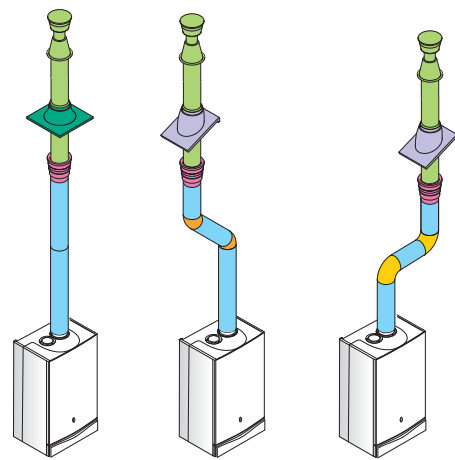


The 3' fall back on concentric flues can be reduced to 1.5' providing the flue system is adequately clamped in accordance with the installation instructions.

Item Description (MULTIFIT) Flue System A	Specification	KEY & OD Dimensions	Baxi/Potterton Sales Code	Potterton Sales Code	Multifit Sales Code
Standard Horizontal Flue inc Elbow*	685mm	60/100mm	5118489		5118489
Horizontal Flue/Wall Terminal	850mm	110mm			243013BAX
Flue Extension	1000mm	100mm	5111074		5111074
Flue Bend (Pair)	135 degree	100mm	5111085		5111085
Flue Bend	135 degree	100mm	5111076		5111076
Flue Bend	93 degree	100mm	5111075		5111075
Flue Internal Fixing Kit / Wall Liner		100mm	5111067		5111067
Flue Terminal Deflector		60mm	5111068		5111068
Pipe Support	Unpainted	100mm	241105		241105
Pipe Support	Painted White	100mm	5111080		5111080
Flue Vertical Adaptor (Boiler)		100mm	5111065		5111065

\*Note - The elbow included with flue kit does not fit to the appliance. The elbow supplied within the boiler carton must be used. The additional elbow can be used as a 93' flue bend (5111075). Please use the elbow supplied with the appliance.

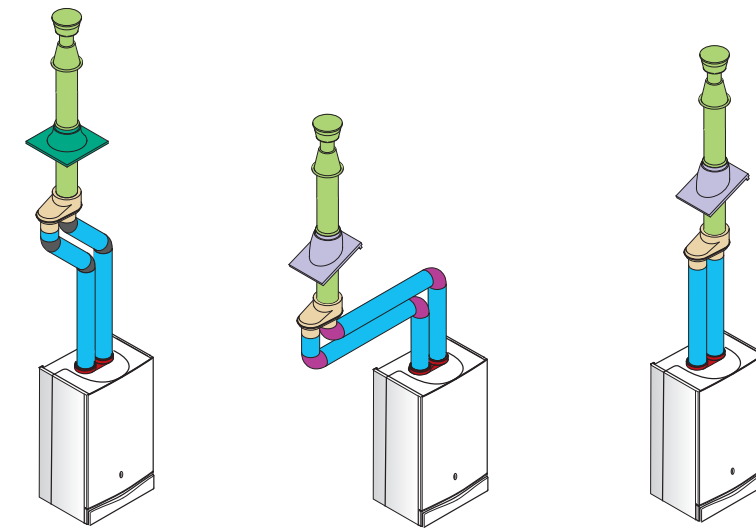
### Vertical Concentric Flues 60/100mm



Item Description (MULTIFIT) Flue System A	Specification	KEY & OD Dimensions	Baxi/Potterton Sales Code	Potterton Sales Code	Multifit Sales Code
Vertical Flue Terminal		125mm	5111078		5111078
Flue Extension	1000mm	100mm	5111074		5111074
Flue Bend	93 degree	100mm			5111075
Flue Bend (Pair)	135 degree	100mm	5111085		5111085
Flue Bend	135 degree	100mm	5111076		5111076
Roof Cover Plate		125mm			246143
Pipe Support	Unpainted	100mm	241105		241105
Pipe Support	Painted White	100mm	5111080		5111080
Flue Vertical Adaptor (Terminal)		100/125mm	5111070		5111070
Flue Vertical Adaptor (Boiler)		100mm			5111065
Pitched Roof Flashing	25 / 45 degree	125mm	246141		246141
Pitched Roof Flashing	35 / 55 degree	125mm	246142		246142
Pitched Roof Flashing*	25 / 50 degree	125mm			5122151
Flat Roof Flashing		125mm	246144		246144

\*Available July 2007

### Twin Pipe Flues 80/80mm



The 3' fall back on concentric flues can be reduced to 1.5' providing the flue system is adequately clamped in accordance with the installation instructions.

Item Description (MULTIFIT) Flue System N	Specification	KEY & OD Dimensions	Baxi/Potterton Sales Code	Potterton Sales Code	Multifit Sales Code
Vertical Flue Terminal		125mm	5111078		5111078
Twin Pipe Extension (Pair inc Brackets)	1000mm	80mm	5111087		5111087
Twin Pipe Flue Bend (Pair)	90 degree	80mm	5111072		5111072
Twin Pipe Flue Bend (2 Pair)	135 degree	80mm			5111086
Roof Cover Plate		100mm	246143		246143
Twin Pipe Support (Pair)		80mm	5111081		5111081
Twin to Concentric Adaptor 80/80 - 80/125		80/125mm	5111084		5111084
Twin Pipe Flue Adaptor (Boiler)		80/80mm	5111071		5111071
Pitched Roof Flashing	25 / 45 degree	125mm	246141		246141
Pitched Roof Flashing	35 / 55 degree	125mm	246142		246142
Pitched Roof Flashing*	25 / 50 degree	125mm			5122151
Flat Roof Flashing		125mm	246144		246144

\*Available July 2007.

### Optional Accessories

Item Description (MULTIFIT)	Specification	KEY & OD Dimensions	Baxi/Potterton Sales Code	Potterton Sales Code	Multifit Sales Code
Integral Electronic Programmer Kit					5111963
Boiler Stand Off Kit					5113380



# Technical specifications >>

# Technical specifications >>

Model		30 HE	40 HE	50 HE	60 HE	70 HE	80 HE
<b>Controls</b>	<b>Units</b>						
User adjustable CH temperature		Yes	Yes	Yes	Yes	Yes	Yes
LED operating/fault status display		Yes	Yes	Yes	Yes	Yes	Yes
Integral 24 hour twin channel timer		Optional	Optional	Optional	Optional	Optional	Optional

Model		30 HE	40 HE	50 HE	60 HE	70 HE	80 HE
<b>Mechanical &amp; Hydraulic</b>	<b>Units</b>						
Gas supply pipe size	mm	15	15	15	15	15	15
Flow & return pipe size	mm	22	22	22	22	22	22
Condensate drain connection	mm	21.5	21.5	21.5	21.5	21.5	21.5
Bypass required		Yes	Yes	Yes	Yes	Yes	Yes
Plastic pipe compatible		Yes	Yes	Yes	Yes	Yes	Yes
Compartment ventilation required		Yes	Yes	Yes	Yes	Yes	Yes

Model		30 HE	40 HE	50 HE	60 HE	70 HE	80 HE
<b>Gas</b>	<b>Units</b>						
Natural gas		Yes	Yes	Yes	Yes	Yes	Yes
Butane/Propane gas		No	No	No	No	No	No
Inlet supply pressure (natural gas)	mbar	20	20	20	20	20	20
Gas rate	m3/hr	0.98	1.30	1.63	1.95	2.28	2.60
Heat input (gross)	kW	10.22	13.62	17.04	20.43	23.84	27.25
Heat output non-condensing	kW	8.82	11.78	14.76	17.72	20.68	23.63
Heat output condensing	kW	9.50	12.64	15.66	18.83	21.89	24.94
Seasonal efficiency band	SEDBUK	B	B	B	B	B	B
NO <sub>x</sub>	Class	2	2	2	2	2	2

Model		30 HE	40 HE	50 HE	60 HE	70 HE	80 HE
<b>Flue Systems</b>	<b>Units</b>						
Standard concentric flue diameter	mm	100	100	100	100	100	100
Standard flue maximum installed length	mm	750	750	750	750	750	750
Maximum equivalent length horizontal	m	3.5	3.5	3.5	3.5	3.5	3.5
Maximum equivalent length vertical	m	3.2	3.2	3.2	3.2	3.2	3.2
Optional twin pipe flue diameter	mm	80 / 80	80 / 80	80 / 80	80 / 80	80 / 80	80 / 80
Maximum equivalent length vertical	m	7.0	7.0	7.0	7.0	7.0	7.0

Model		30 HE	40 HE	50 HE	60 HE	70 HE	80 HE
<b>Electrical</b>	<b>Units</b>						
Electrical supply	Volts/Hz	230 / 50	230 / 50	230 / 50	230 / 50	230 / 50	230 / 50
Power consumption	Watts	80	80	80	80	80	80
External fuse rating	Amps	3	3	3	3	3	3
Ingress protection rating		IP20	IP20	IP20	IP20	IP20	IP20
Pump overrun		Yes	Yes	Yes	Yes	Yes	Yes
24hr pump exercise		Yes	Yes	Yes	Yes	Yes	Yes
Integral frost thermostat		Yes	Yes	Yes	Yes	Yes	Yes

Model		30 HE	40 HE	50 HE	60 HE	70 HE	80 HE
<b>Weight</b>	<b>Units</b>						
Maximum installation lift weight	kg	39	39	39	42.8	42.8	42.8