

Size-IT - made to measure.



Size-it – the original sizing tool from the UK's number one in commercial water heating.

Size-it's comprehensive database allows you to manage, match and measure up the different parts for your property type and hot water requirements. It'll then recommend the most suitable Andrews Water Heaters solution for your job, along with a detailed summary report and all the technical information required to complete a hot water schedule.

- **Devices** – accessible online, on any device
- **Projects** – manage a portfolio of projects
- **Needs** – from efficiency credits to the latest UK legislation
- **Preferences** – user-friendly and intuitive.



Size-it

Register today at sizeit.co.uk

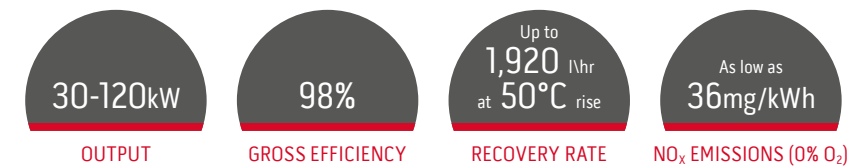
MAXXflo EVO Condensing Water Heater

Specifically designed to meet industry demands – it delivers low, future-proofed NO_x emissions. With efficiency of up to 98%, BMS connectivity offering 24/7 remote monitoring and a continuous supply of hot water with a 1920lt/hr recovery rate, it delivers class-leading performance.

Models available in 30, 60, 90 and 120kW outputs with 200 or 300 litre storage capacity.



Technical specification



Features

- 30 and 60kW single burners and twin burners between 90 and 120kW
- Independent service valves and pressure sensors on each heat exchanger in twin burner versions
- Low NO_x burners
- High efficiency modulating pumps (ErP rated A)
- Multi-line graphical display
- Ready to connect into BMS via Modbus protocol
- Full anti-legionella functions with strap-on sensor as standard

Benefits

- With fewer burners both commissioning and planned maintenance costs are minimised. Offering in-built redundancy and flexibility (90 and 120kW twin burners)
- Full built in redundancy and service flexibility as burners and heat exchangers can be isolated
- Compliant with and exceeds current legislative requirements
- Improved operating efficiencies with greater temperature control
- Access to live data, settings and history. Easy to use with full control of the burners and accurate charging of integral tank
- Easy integration into BMS for remote monitoring and control; identifies specific problems and maximises maintenance efficiency
- Control of secondary return circuit temperature and pump operation ensures protection against legionella and improves safety

Specifications

		Model (Single Burner)				
		CWH 30/201	CWH 30/301	CWH 60/201	CWH 60/301	
Energy	Heat input net (gross)	kW	28(31)	28(31)	56(62)	56(62)
	Heat output	kW	30.5	30.5	61	61
	Gross thermal efficiency	%	98	98	98	98
	Standby heat loss	kWh/day	1.68	2.26	1.68	2.26
ErP	NO _x emissions (0% O ₂)	mg/kWh	39	39	36	36
	ErP efficiency rating		A	A	A	A
	Water heater efficiency	%	95	98	91	97
	Noise level (EN15036-1 avg @1m)	dBA	53	63	53	63
Gas data	Gas flow rate (natural gas)	m ³ /hr	2.95	2.95	5.95	5.95
	Gas flow rate (propane)	m ³ /hr	1.15	1.15	2.35	2.35
Water	Storage capacity	litre	200	300	200	300
	Recovery rate through 50°C Δt	litre/hr	480	480	960	960
	Recovery rate through 56°C Δt	litre/hr	429	429	856	856
	Maximum operating pressure (unvented)	bar	6	6	6	6
	Minimum working pressure	bar	0.8	0.8	0.8	0.8
	Maximum static pressure	bar	7.5	7.5	7.5	7.5
Electrical	Fuse rating	amp	5	5	5	5
	Electrical power consumption - standby	W	3.5	3.5	3.5	3.5
	Electrical power consumption - max	W	100	145	100	145
	Electrical requirements	V	220-240V/50Hz	220-240V/50Hz	220-240V/50Hz	220-240V/50Hz
Misc	Weight full	kg	370	485	380	490
	Weight full empty	kg	155	165	170	180
	Maximum outlet temperature	°C	65	65	65	65
	Maximum flue gas temperature	°C	90	90	90	90
Service clearance	Front	mm	800	800	800	800
	Right side	mm	200	200	200	200
	Rear	mm	200	200	200	200
	Left side	mm	300	300	300	300
	Above	mm	300	300	300	300
Shipping	Shipping width	mm	880	880	880	880
	Shipping depth	mm	1160	1160	1160	1160
	Shipping height	mm	2213	2213	2213	2213
	Shipping weight	kg	224	239	234	239

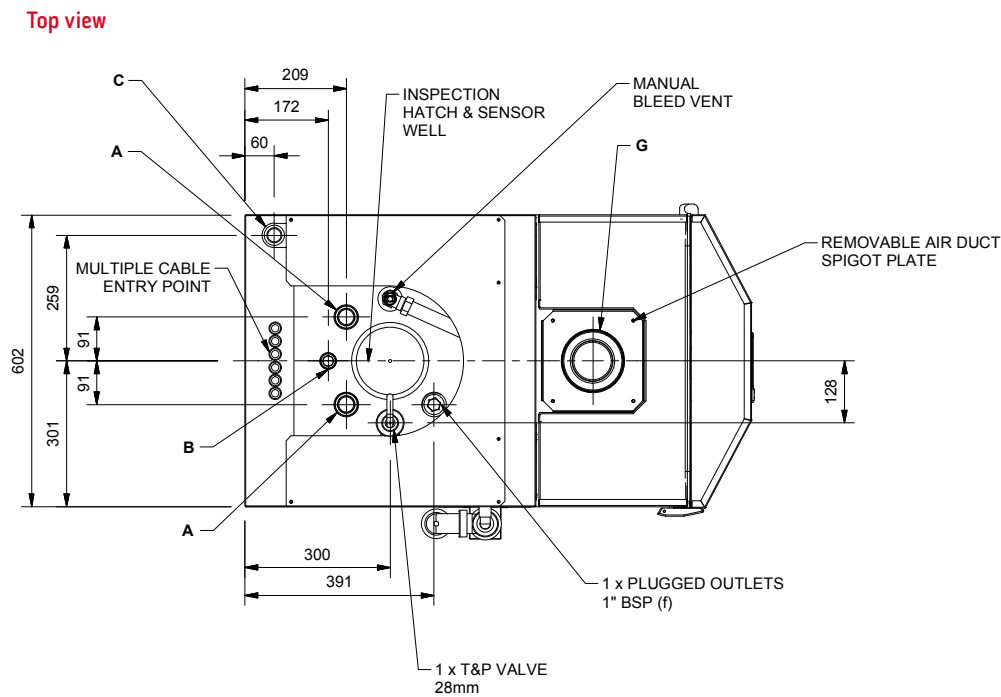
Specifications

		Model (Twin Burner)		
		CWH 90/302	CWH 120/302	
Energy	Heat input net (gross)	kW	84 (93)	112(124)
	Heat output	kW	91.6	122
	Gross thermal efficiency	%	98	98
	Standby heat loss	kWh/day	2.26	2.26
ErP	NO _x emissions (0% O ₂)	mg/kWh	39	36
	ErP efficiency rating		-	-
	Water heater efficiency	%	91	90
	Noise level (EN15036-1 avg @1m)	dBA	62	65
Gas data	Gas flow rate (natural gas)	m ³ /hr	8.7	11.6
	Gas flow rate (propane)	m ³ /hr	3.5	4.7
Water	Storage capacity	litre	300	300
	Recovery rate through 50°C Δt	litre/hr	1440	1920
	Recovery rate through 56°C Δt	litre/hr	1286	1712
	Maximum operating pressure (unvented)	bar	6	6
	Minimum working pressure	bar	0.8	0.8
	Maximum static pressure	bar	7.5	7.5
Electrical	Fuse rating	amp	5	5
	Electrical power consumption - standby	W	5.5	5.5
	Electrical power consumption - max	W	210	290
	Electrical requirements	V	220-240V/50Hz	220-240V/50Hz
Misc	Weight full	kg	485	505
	Weight full empty	kg	185	205
	Maximum outlet temperature	°C	65	65
	Maximum flue gas temperature	°C	90	90
Service clearance	Front	mm	800	800
	Right side	mm	200	200
	Rear	mm	200	200
	Left side	mm	300	300
	Above	mm	300	300
Shipping	Shipping width	mm	880	880
	Shipping depth	mm	1160	1160
	Shipping height	mm	2213	2213
	Shipping weight	kg	254	274

Accessories / Flueing / Controls

	30/201, 30/301, 60/201 and 60/301	90/302 and 120/302
Accessories	Sales code	Sales code
Unvented system kit	7726954	7726954
Set of 4 castors	7709385	7709385
Buffer-SS300-10, 300 litre stainless steel tank	7735728	7735728
Flueing	Sales code	Sales code
Horizontal flue kit	7726957	7620230*
Vertical flue kit	5103917	7620229
1m cuttable flue extension	5136148	7726994
90° elbow	5136151	7620232
45° elbow	5136150	7726992
Flat Roof Plate	E065	E217
Angled Roof Plate	E066	E218
Wall Bracket	5136152	E219
Wall Guard		E630
Flue Condense Trap	7726982	7620233
Condense Bottle Trap	E211	E211
Condense Trap Pipe Kit	E261	E261
Controls	Sales code	Sales code
Clip in expansion module	7720070	7720070

*there are no elbows included in kit 7620230



Dimensions

		Model					
		CWH 30/201	CWH 30/301	CWH 60/201	CWH 60/301	CWH 90/302	CWH 120/302
A: Inlet/outlet connections	BSP	1½	1½	1½	1½	1½	1½
B: Return connection	BSP	1	1	1	1	1	1
C: Gas connection	BSP	¾	¾	¾	¾	¾	¾
D: Water heater height	mm	1556	1980	1556	1980	1980	1980
E: Width of water heater	mm	602	602	602	602	602	602
F: Water heater depth	BSP	1046	1046	1046	1046	1046	1046
G: Flue diameter – connection balanced flue	mm	80/125	80/125	80/125	80/125	130/200	130/200

