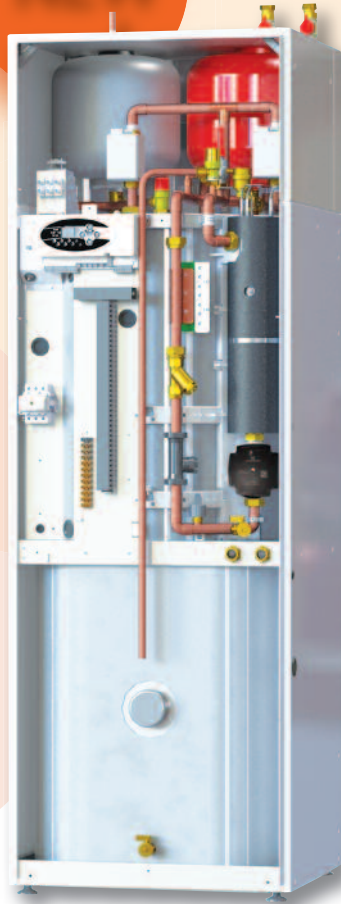


Comet ELECTRIC COMBI BOILER

NEW



ehc

the electric heating company

Comet ELECTRIC COMBI BOILER

The latest design innovation from EHC

The latest innovative design from EHC combines the award winning Comet Electric Boiler with a Stainless Steel Indirect Unvented Cylinder housed in an elegant enclosure. It is a complete pre-plumbed / pre-wired Electric Heating & Hot Water solution that eliminates unnecessary plumbing and unsightly pipework. To maximise space and minimise installation the unit has top entry pipework.

Comet Boiler Features

- Available in 9kW, 12kW & 14.4kW outputs
- Fully modulating
- Stainless Steel Heat Exchanger with Automatic Air Vent
- High Current Thermal Cut-Out
- Digital Pressure Gauge
- Integral System Diagnostics
- 100% Efficient
- Magnetic Filter
- Vortex Flow Sensor

Stainless Steel Cylinder & System Features

- 140 Litre Cylinder Capacity
- T&P Relief Valve
- Automatic By-Pass
- 2 Zone Valves
- Drain Valve
- Connection for Back-Up Immersors
- Expansion Vessels for Central Heating & Domestic Hot Water pre-plumbed within the unit

The external controls supplied are a Twin Channel Programmer and Room Thermostat. An Inlet Control Set and Tundish are also provided and should be installed external to the unit.

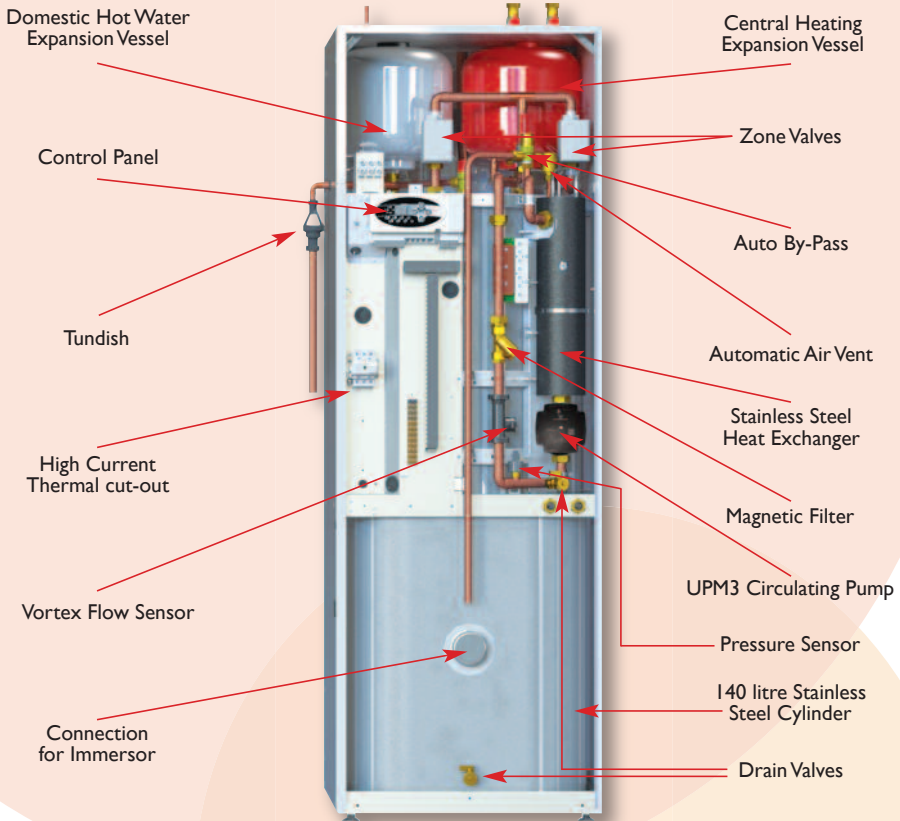
To comply with safety and public health regulations the Stainless Steel Cylinder is WRAS approved.



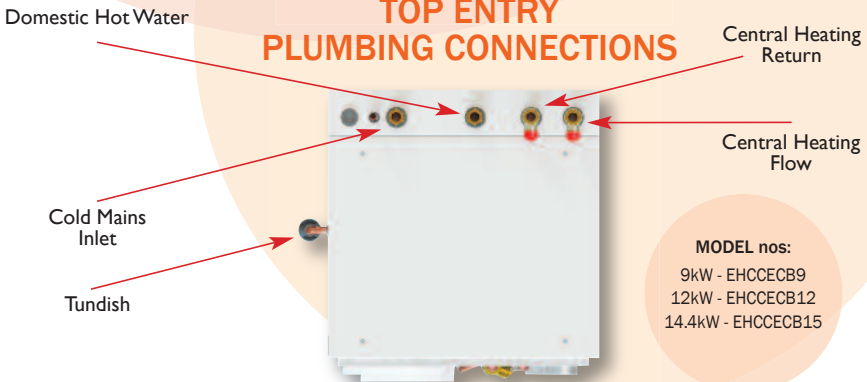
The Comet Electric Boiler carries a 2 year guarantee and the Stainless Steel Cylinder 10 year guarantee subject to the Manufacturers Terms & Conditions.



ELECTRIC COMBI BOILER WHAT'S INSIDE



TOP ENTRY PLUMBING CONNECTIONS



MODEL nos:
 9kW - EHCCECB9
 12kW - EHCCECB12
 14.4kW - EHCCECB15

TECHNICAL SPECIFICATION

Electrical supply		230V - 50Hz		
Rated power	kW	9	12	14.4
Rated current	A	39	52	63
Minimum permitted Cable diameter		10mm		16mm
Primary system pressure relief valve setting	Bar	3.0		
Primary system operating pressure (min)	Bar	1.0		
Thermal cut-out	°C	t cut-out 90-99		
Expansion vessel		Capacity 12L - pre-charged 1.5 Bar		
Outlet flow temperature	°C	40 ÷ 85		
Bypass valve	Bar	Adjustable 1 - 5		
Primary circulating pump		GRUNDFOS UPM3		
Safety valve	Bar	Opening pressure: 3 Bar		
Hydraulic connections		22mm		

CYLINDER DETAILS

Maximum water supply pressure	Bar	10		
Cylinder operating pressure (secondary)	Bar	3		
Cylinder operating pressure (primary max)	Bar	2.5		
Cylinder operating pressure (secondary max)	Bar	5.5		
Expansion relief valve setting (secondary)	Bar	6		
Thermostat	°C	5 to 66 °C		
Tank capacity	ltr	140		
Temperature-pressure valve		95°C/6 Bar TP 152 - 1/2		
Expansion vessel	12ltr	3 Bar (charge pressure)		
Hydraulic connections		Copper pipe ø 22 x 1		
Optional immersion heater	3000w	240 volt		
Net Weight	kg	106.8		
Gross Weight	kg	246		
Dimensions	mm	1745 x 580 x 630		

OPTIONAL EXTRAS ● EHC Shower Flow Sensor ● Back-up Immersion Heater ● Solar PV Immersion Heater

HOT WATER RECOVERY TIMES

MODEL no.	15° to 55°	15° to 72°
9kW	44mins	62mins
12kW	36 mins	57mins
14.4kW	29mins	45mins



the electric heating company

Block 5 Unit 40 Third Road Blantyre Industrial Estate Blantyre G72 0UP Tel: 01698 820533 Fax: 01698 825697
 email: info@electric-heatingcompany.co.uk www.electric-heatingcompany.co.uk

