

Low level Doc M ware set with ring only seat



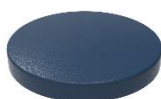
Product details

Warranty:	See individual products
Max load:	See individual products
Doc M compliant:	Yes
Suitable for wet areas:	Yes

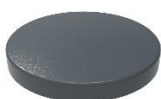
Features

- Complies with Part M of the Building Regulations
- Low level pan & cistern assembly
- Inlet valve and syphon Reg 4 Certified (WRAS, NSF, Kiwa, etc.)

Finish options



DB
Dark Blue (RAL 5011)



DG
Dark Grey (RAL 7016)



GY
Grey (RAL 7006)



WH
White (RAL 9016)

Product description

Product code

Low level Doc M ware set, pan & cistern assembly, ring only seat

LLWARESET/**

Low level Doc M ware set, pan & lockable cistern assembly, ring only seat

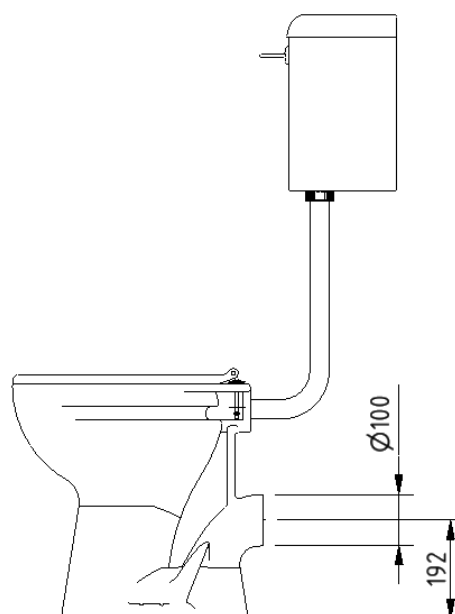
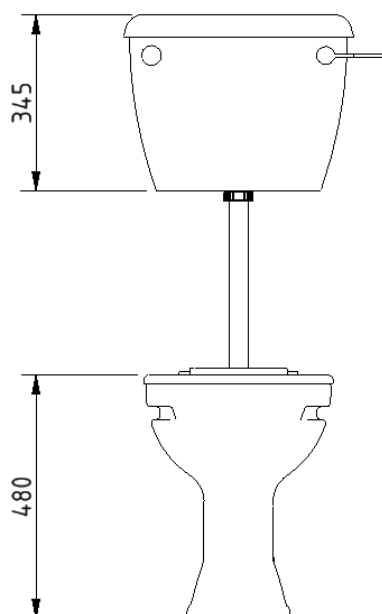
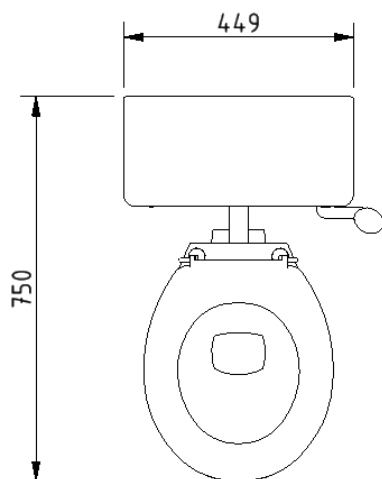
LLWARESET/LC/**

Replace ** with 2-character short code for chosen finish (Powder Coated).
e.g., LLWARESET/DB

Pack contents

- 1 x Low level box rim Doc M pan
- 1 x Low level cistern for box rim pan (optional lockable lid)
- 1 x Low level cistern fittings pack with Doc M spatula lever and flush pipe
- 1 x Ring only toilet seat

Dimensions (mm)



Low level box rim Doc M pan



Product details

Warranty: Lifetime

Max load: 400 kg

Doc M compliant: Yes

Suitable for wet areas: Yes

Features

- Complies with Part M of the Building Regulations
- UKCA and CE compliant
- Comfort height to allow easier side transfer from wheelchair

Finish options



WH
White (RAL 9016)

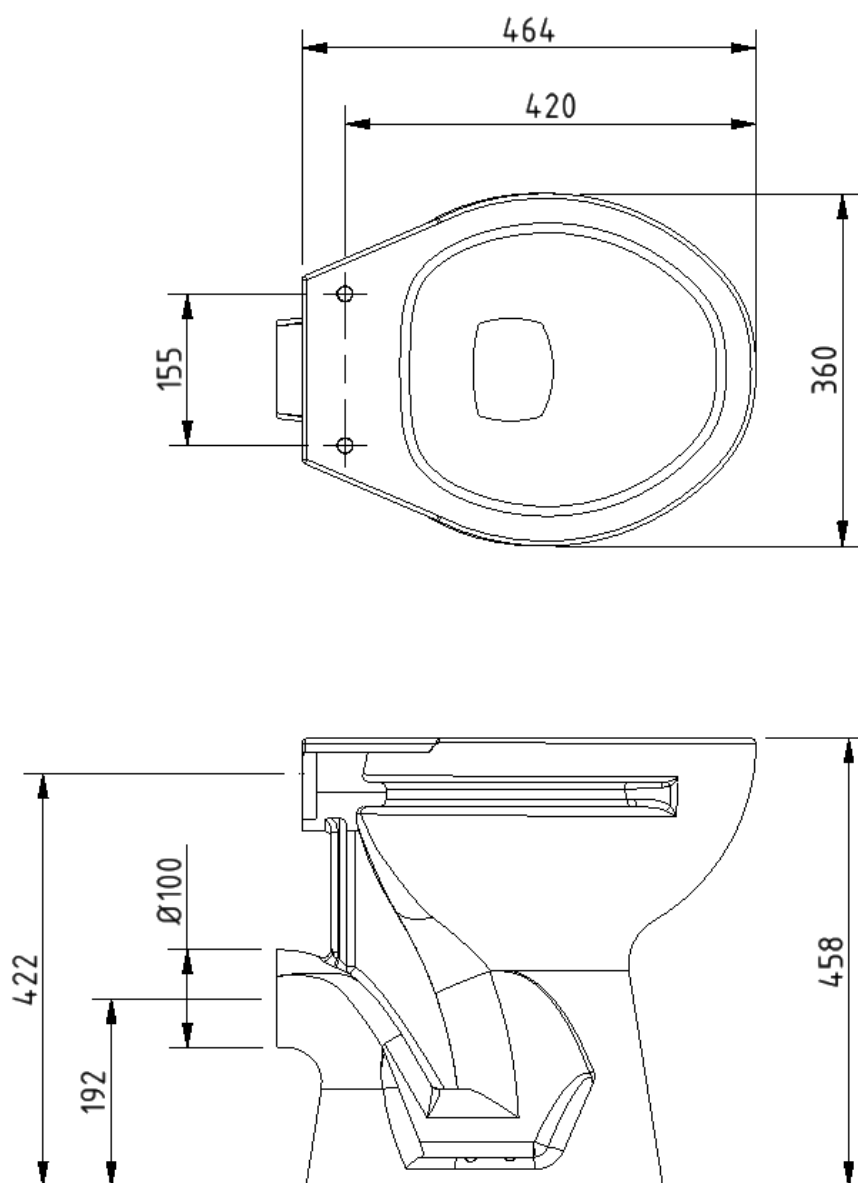
Product description

Low level box rim Doc M pan, white

Product code

B-BWPANLL-1

Dimensions (mm)



Low level cistern for box rim pan



Product details

Warranty:	Lifetime
Max load:	N/A
Doc M compliant:	Yes
Suitable for wet areas:	Yes

Features

- Complies with Part M of the Building Regulations
- UKCA & CE compliant
- Suitable for front lever
- Bottom inlet
- Universal - either left or right handed
- Lockable lid option

Finish options



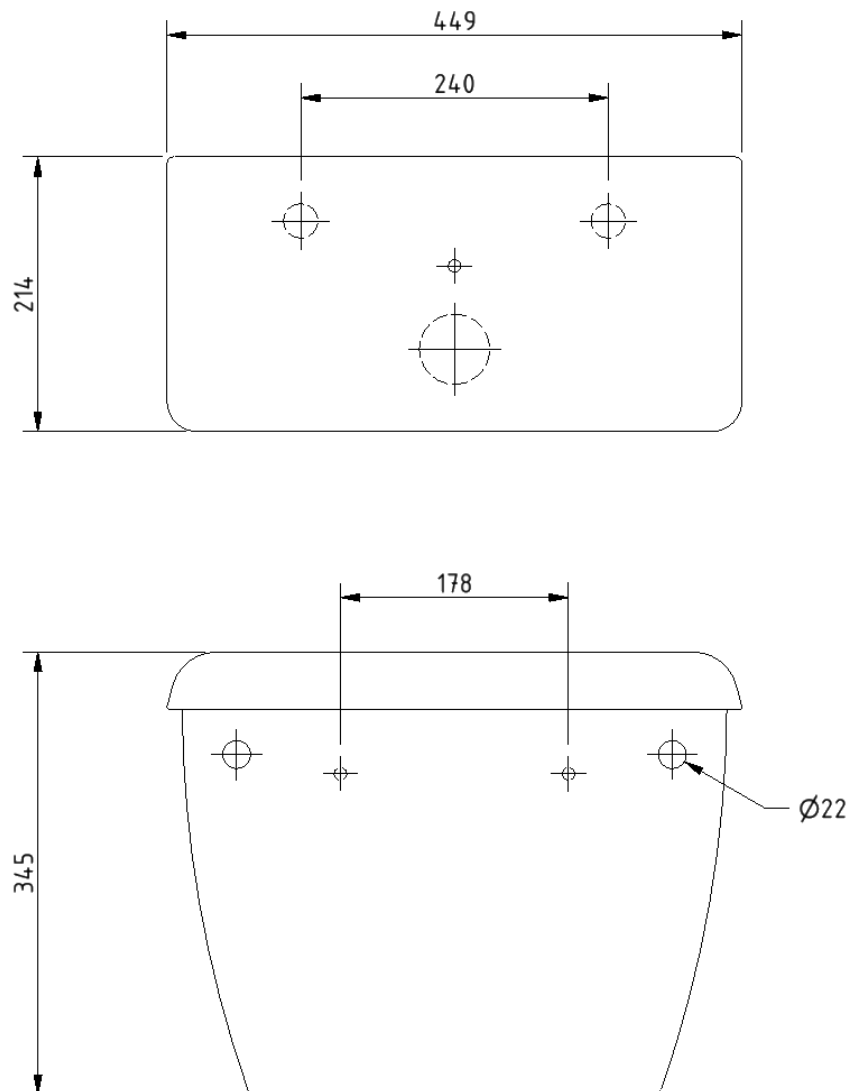
WH
White (RAL 9016)

Product description

Product code

Low level cistern for box rim pan	NY01-SW-21090-WH
Low level cistern with lockable lid for box rim pan	NY01-SW-21099-WH

Dimensions (mm)



Toilet seat, ring only, stainless steel pillar hinge



Product details

Warranty: 2 years

Max load: 150 kg

Doc M compliant: Yes

Suitable for wet areas: Yes

Features

- Complies with Part M of the Building Regulations
- Anti-bacterial, strong and durable Duroplast seat
- Ergonomic and comfortable shape
- Stainless steel hinge (bottom fix as standard)
Additional hinge pack to convert to top fix: NY-TOPFIXHINGE
- Adjustable locating buffers
- Fits close coupled, low level, back to wall and wall hung pans

Finish options



DB
Dark Blue (RAL 5011)



DG
Dark Grey (RAL 7016)



GY
Grey (RAL 7005)



WH
White (RAL 9016)

Product description

Toilet seat, ring only, stainless steel pillar hinge

Product code

260015/**

Replace ** with 2-character short code for chosen finish.
e.g., 260015/DB

Dimensions (mm)

