

## Exposed valve Doc M shower pack with stainless steel concealed fixing grab rails



### Product details

**Warranty:** See individual products

**Max load:** See individual products

**Doc M compliant:** Yes

**Suitable for wet areas:** Yes

### Features

- Complies with Part M of the Building Regulations
- Reg 4 Certified (WRAS, NSF, Kiwa, etc.) & TMV3 approved thermostatic mixer shower with extended lever
- Extended projection shower seat to allow easier side transfer from wheelchair
- Non-corrosive concealed fixing stainless steel grab rails & hinged support rails
- Simple one box solution

### Finish options

#### Powder Coated



**DB**  
Dark Blue (RAL 5011)



**DG**  
Dark Grey (RAL 7016)



**GY**  
Grey (RAL 7005)



**WH**  
White (RAL 9016)

#### Mechanical



**SP**  
Polished Stainless Steel



**SS**  
Satin Stainless Steel

### Product description

### Product code

Exposed valve Doc M shower pack, stainless steel, concealed fixings

230404/\*\*

Replace \*\* with 2-character code for chosen finish (Powder Coated / Mechanical).  
e.g., 230404/DB

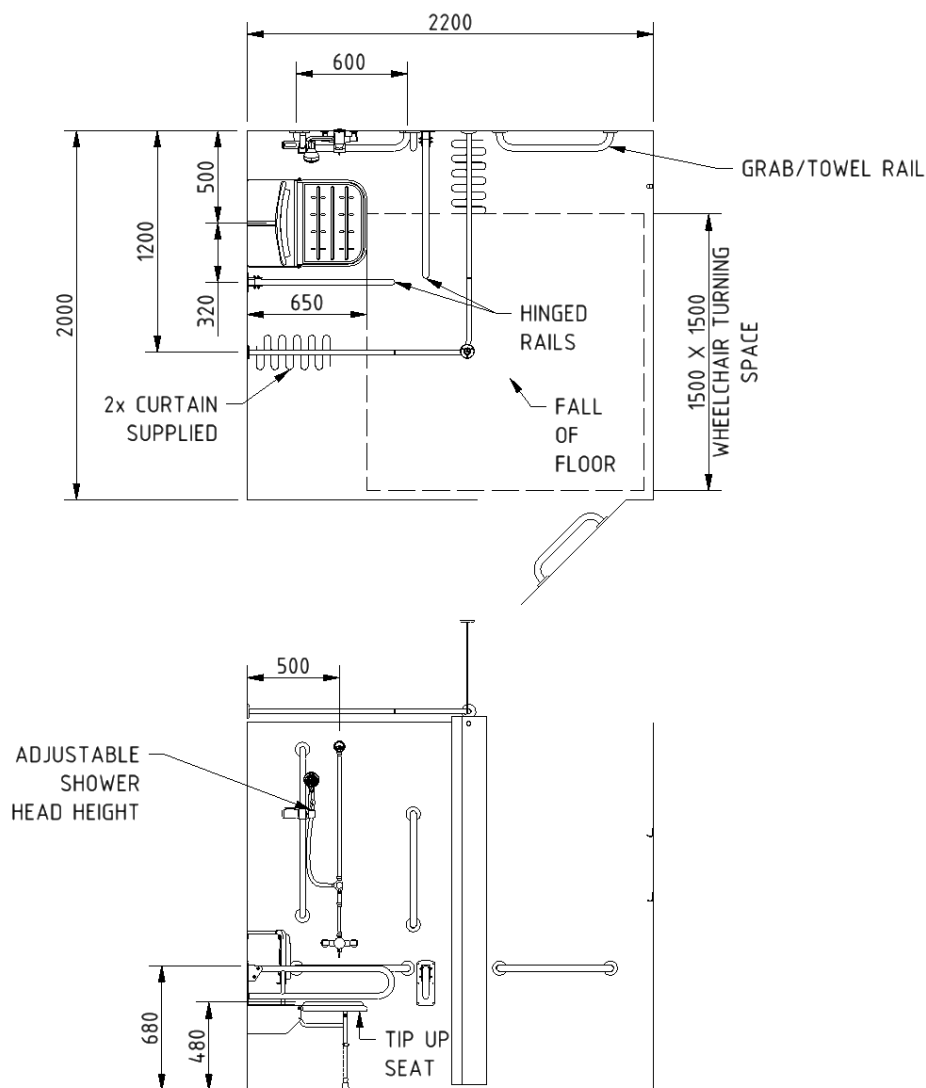
## Pack contents

- 1 x Doc M shower seat
- 1 x Exposed TMV3 Doc M shower valve *(always Chrome)*
- 1 x Exposed Doc M shower diverter *(always Chrome)*
- 1 x Antivandal overhead shower head *(always Chrome)*
- 1 x Shower head and hose *(always Chrome)*
- 3 x 600mm Stainless steel grab rails with concealed fixings
- 1 x 450mm Stainless steel grab rail with concealed fixings
- 1 x 900mm Stainless steel grab rail with concealed fixings *(always SP finish)\**
- 2 x 800mm Stainless steel hinged support rails
- 1 x 1200mm x 1200mm Stainless steel shower curtain rail *(always WH finish)\**
- 2 x Weighted shower curtains
- 1 x Sliding Shower head bracket *(always Chrome)*
- 1 x Single robe hook

*\*Refer to pack items for details of finishes*

*Note: The exposed pipe for the overhead shower is NOT included in pack.*

## Dimensions (mm)



## Exposed TMV3 shower valve and diverter kit



### Product details

**Warranty:** 5 years

**Max load:** N/A

**Doc M compliant:** Yes

**Suitable for wet areas:** Yes

### Features

- Complies with Part M of the Building Regulations
- Single sequential control for both temperature and flow
- Automatic shut off in the event of hot or cold water supply failure
- Brass construction
- TMV3 Approved & Reg 4 Certified (WRAS, NSF, Kiwa, etc.)
- The supplied pipes can be turned through 90° to allow external pipework
- Main valve inlet connections can be turned through 90° to allow external pipework

### Finish options



### Product description

Exposed TMV3 shower valve and diverter kit

### Product code

COM-NYTS3650TOELCKIT

### Pack contents

- 1 x Inline diverter
- 1 x Exposed valve
- 1 x Fixed shower head

#### Flo rates (l/min)

System pressure (bar)	0.2	0.5	1	2	3	5
Open outlet (mixed)	3.9	6.3	6	7	7.5	8

#### Specification

**Maximum hot water supply temperature:** 65 degrees Celsius

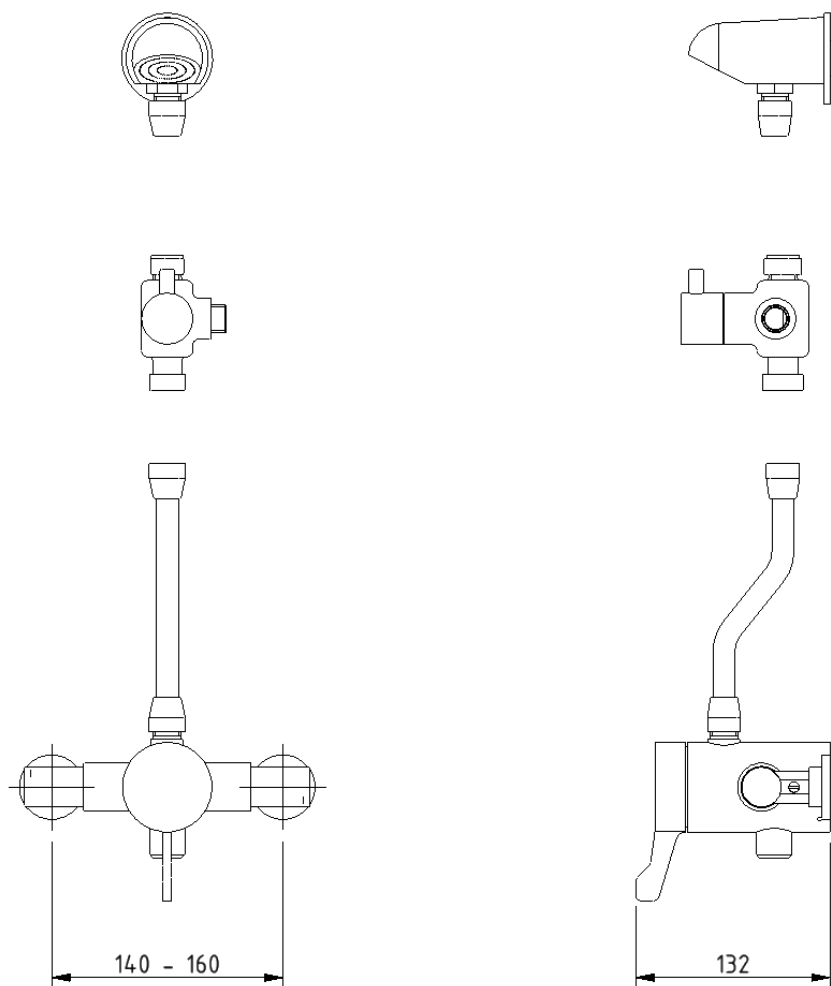
**Maximum static pressure:** 10 bar

**Minimum dynamic pressure:** 0.2 bar MIN, 5 bar MAX

**Connection inlet:** 15mm compression

**Connection outlet:** G 1/2"

#### Dimensions (mm)



**NOTE: MAIN VALVE INLET CONNECTIONS CAN TURN THROUGH 90 DEGREES FOR PIPEWORK RUNNING EXTERNAL TO THE WALL.**

Fitzroy of London may occasionally need to change specification of products and/or kit contents and reserves the right to do so. We strive to keep our documentation up to date; however, we cannot guarantee this. We accept no liability for any information given on this data sheet.

## Wall mounted padded Doc M shower seat



### Product details

**Warranty:** 5 years

**Max load:** 250 kg

**Doc M compliant:** Yes

**Suitable for wet areas:** Yes

### Features

- Complies with Part M of the Building Regulations
- Extended projection to allow easier side transfer from wheelchair
- Aluminium and stainless frame
- Durable clip on plastic seat
- Adjustable height
- Drainage holes for easy-drain
- Back support for optimum comfort
- Closed cell polyurethane pad for maximum hygiene and comfort
- Foldable design

### Finish options



**DB**  
Dark Blue (RAL 5011)



**GY**  
Grey (RAL 7005)

### Product description

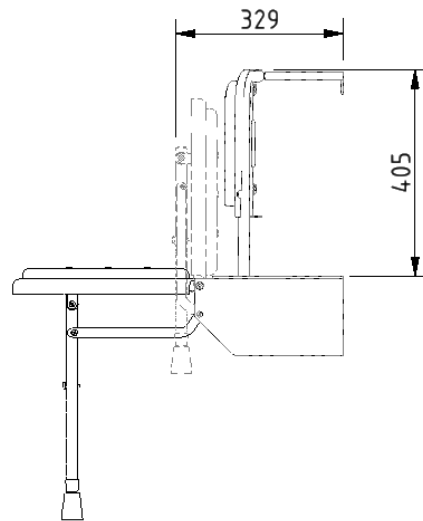
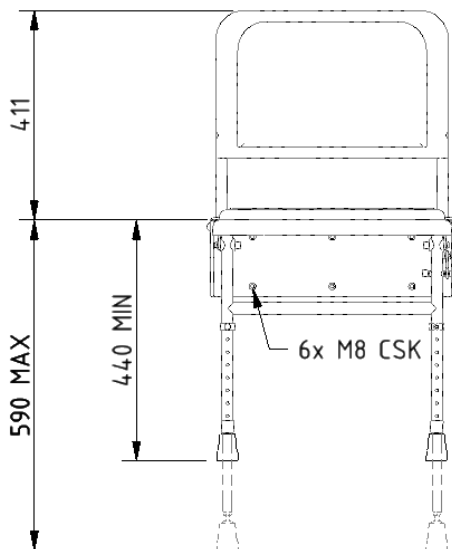
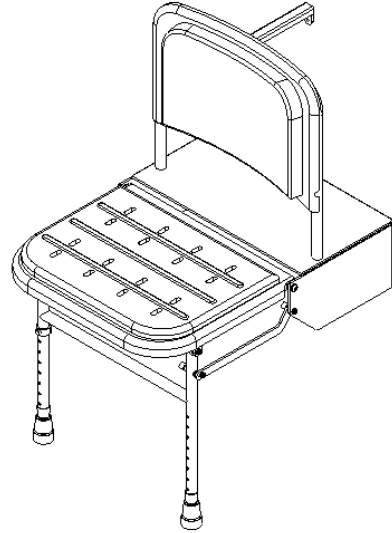
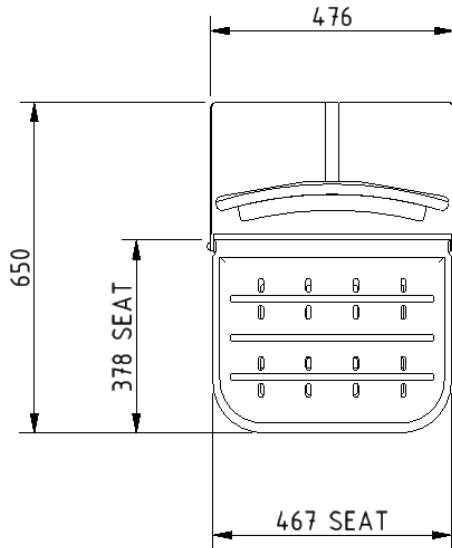
### Product code

Doc M shower seat, 650mm projection, polished frame

SB-085/\*\*

Replace \*\* with 2-character short code for chosen finish.  
e.g., SB-085/DB

Dimensions (mm)



## Stainless steel lift and lock hinged support rail



### Product details

**Warranty:** 5 years

**Max load:** 135 kg

**Doc M compliant:** Yes (800mm only)

**Suitable for wet areas:** Yes

### Features

- Complies with Part M of the Building Regulations
- Lift and lock folding mechanism
- Non-corrosive stainless steel construction
- Toilet roll holder (optional)

### Finish options

#### Powder Coated



**DB**  
Dark Blue (RAL 5011)



**GY**  
Grey (RAL 7005)



**DG**  
Dark Grey (RAL 7016)



**WH**  
White (RAL 9016)

#### Mechanical



**SP**  
Polished Stainless Steel



**SS**  
Satin Stainless Steel

### Product description

### Product code

Hinged lift and lock support rail, stainless steel, 650mm

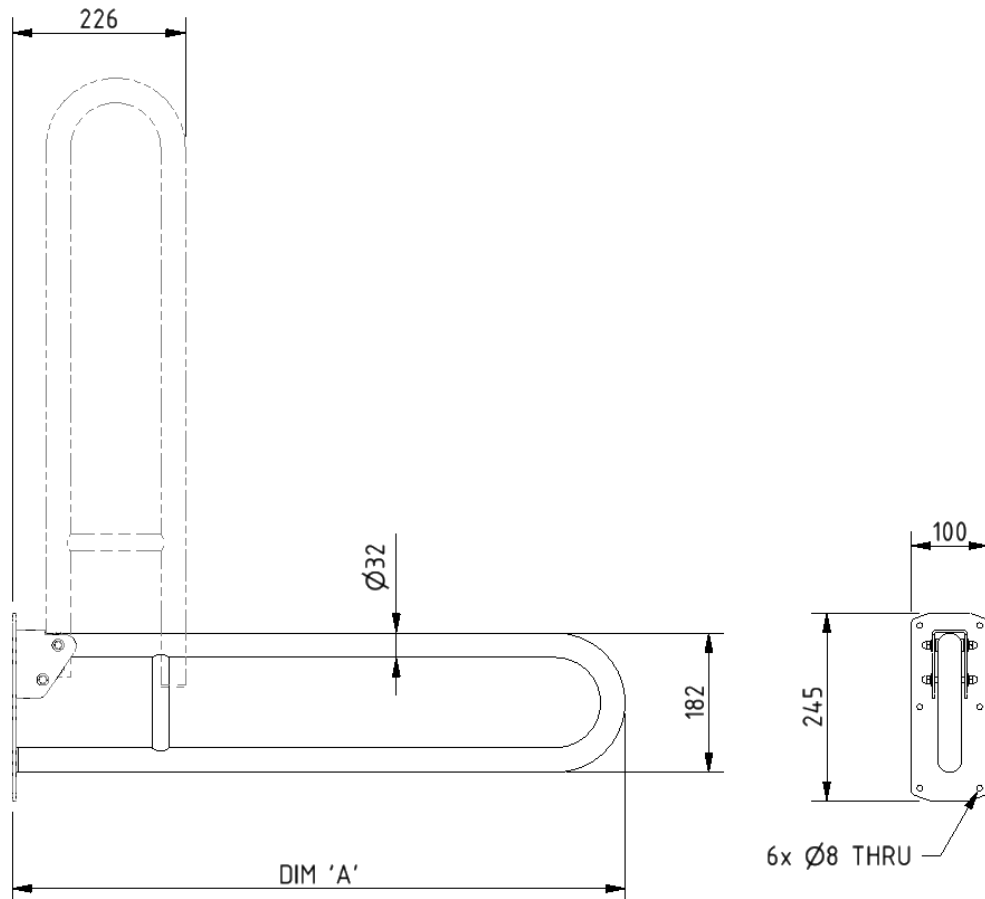
211865/\*\*

Hinged lift and lock support rail, stainless steel, 800mm

211880/\*\*

Replace \*\* with 2-character code for chosen finish (Powder Coated / Mechanical).  
e.g., 211865/DB

## Dimensions (mm)



PRODUCT CODE	211865/**	211880/**
DIM 'A'	650	800

## Stainless steel grab rail with concealed fixings, 35mm diameter tube



### Product details

<b>Warranty:</b>	5 Years
<b>Max load:</b>	185 kg
<b>Doc M compliant:</b>	Yes
<b>Suitable for wet areas:</b>	Yes

### Features

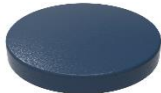
- Stainless steel construction
- Durable powder coated finish
- Concealed fixing

### Finish options

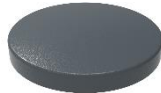
#### Powder coated



**WH**  
White (RAL 9016)



**DB**  
Dark Blue (RAL 5011)



**DG**  
Dark Grey (RAL 7016)



**GY**  
Grey (RAL 7005)

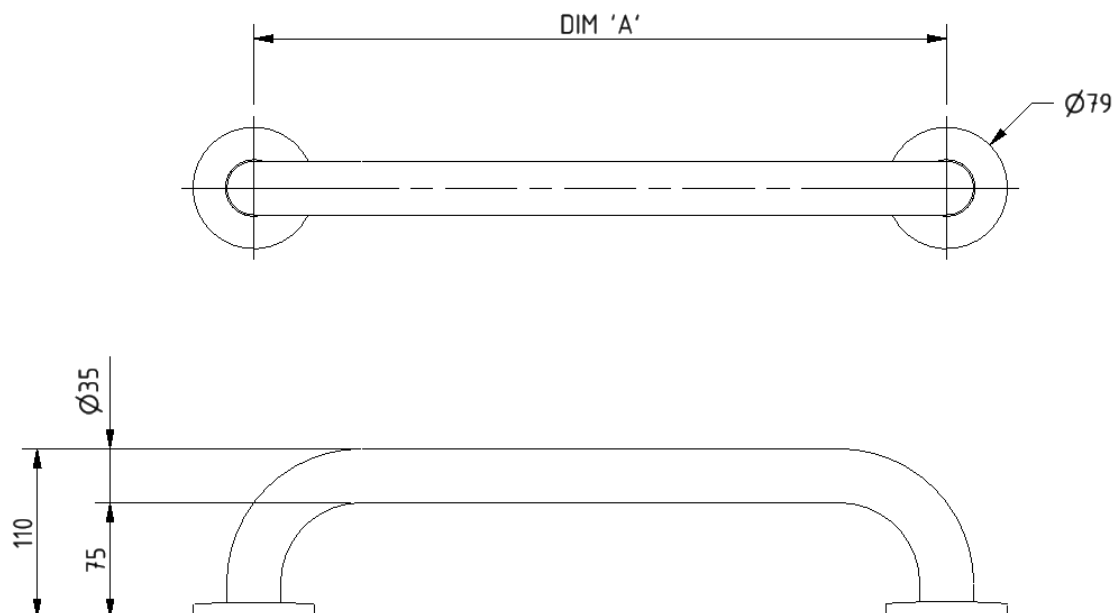
### Product description

### Product code

Grab rail, stainless steel, concealed fixings, 35mm diameter, 300mm	210130/**
Grab rail, stainless steel, concealed fixings, 35mm diameter, 450mm	210145/**
Grab rail, stainless steel, concealed fixings, 35mm diameter, 600mm	210160/**
Grab rail, stainless steel, concealed fixings, 35mm diameter, 900mm	210190/**

Replace \*\* with 2-character short code for chosen finish.  
e.g., 210130/WH

# Dimensions (mm)



PRODUCT CODE	210130/**	210145/**	210160/**	210190/**
DIM 'A'	300	450	600	900

## Single aluminium robe hook



### Product details

**Warranty:** 2 years

**Max load:** N/A

**Doc M compliant:** Yes

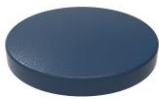
**Suitable for wet areas:** Yes

### Features

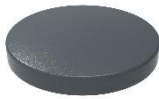
- Aluminium construction
- Colour options available for visually impaired
- Complies with Part M of the Building Regulations

## Finish options

### Powder Coated



**DB**  
Dark Blue (RAL 5011)



**DG**  
Dark Grey (RAL 7016)



**GY**  
Grey (RAL 7005)



**MB**  
Matt Black (RAL 9005)



**WH**  
White (RAL 9016)

## Product description

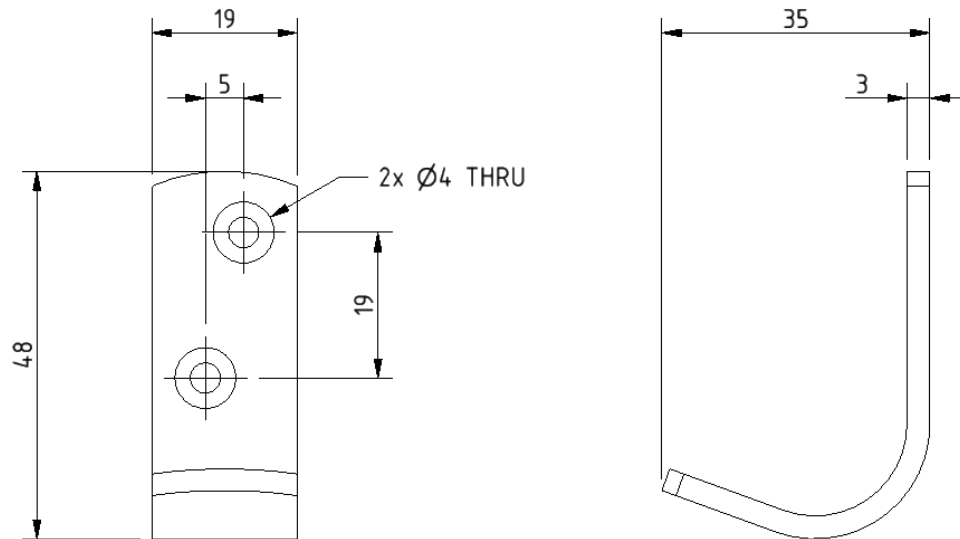
Single robe hook, aluminium

## Product code

141701/\*\*

Replace \*\* with 2-character short code for chosen finish (Powder Coated).  
e.g., 141701/DB

# Dimensions (mm)



## Sliding shower head bracket



### Product details

**Warranty:** 5 years

**Max load:** N/A

**Doc M compliant:** Yes

**Suitable for wet areas:** Yes

### Features

- Complies with Part M of the Building Regulations
- Large button for easy operation for users with limited dexterity
- Suitable for use with 32mm diameter rails

## Finish options



**CP**  
Polished Chrome

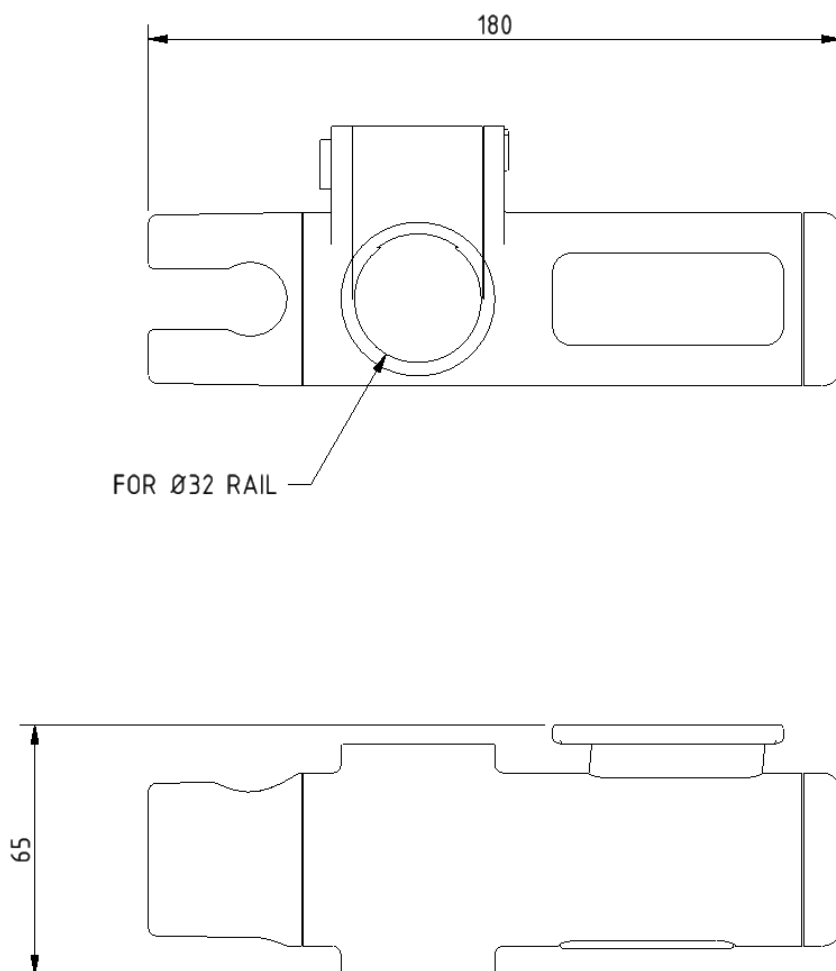
## Product description

Sliding shower head bracket, for 32mm rail, chrome polished

## Product code

250401

Dimensions (mm)



## Shower handset



### Product details

**Warranty:** 5 years

**Max load:** N/A

**Doc M compliant:** Yes

**Suitable for wet areas:** Yes

### Features

- Robust plastic construction
- ½" BSP threaded connection
- 3 stage flow style adjustment paddle

## Finish options



**CP**  
Polished Chrome

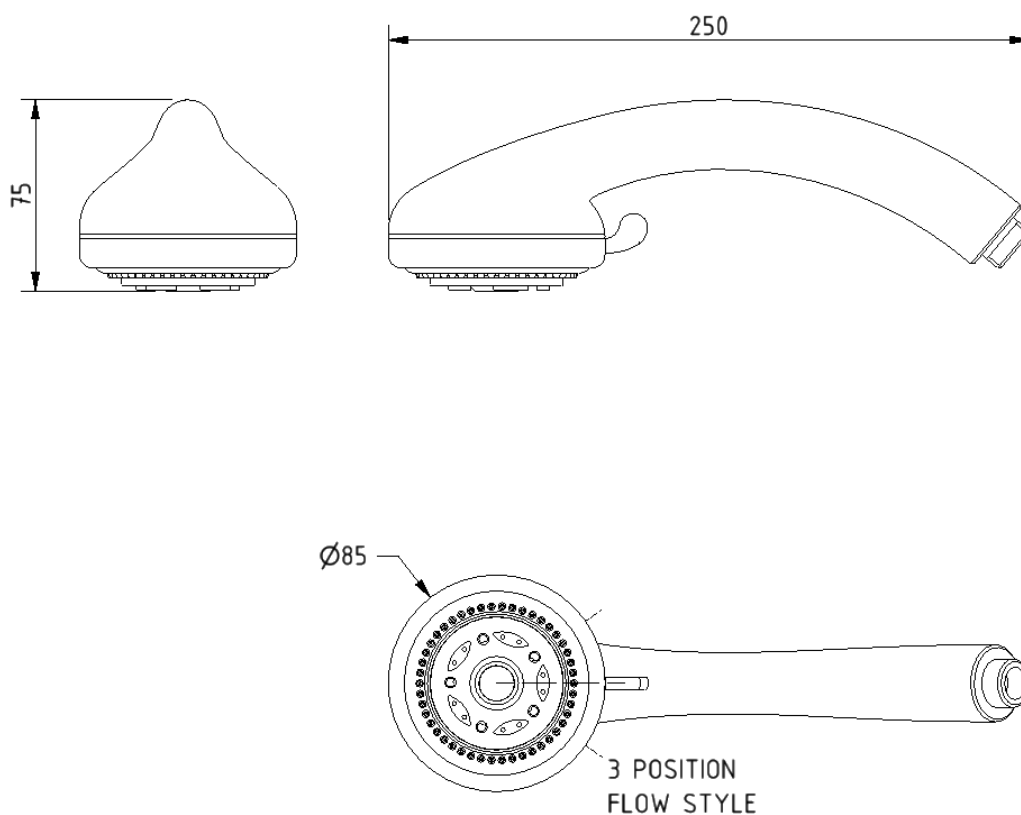
## Product description

Shower handset, chrome plated

## Product code

COM-BO30009CP

Dimensions (mm)



## Stainless steel L-shaped shower curtain rail, 1200mm x 1200mm



### Product details

**Warranty:** 5 years

**Max load:** N/A

**Doc M compliant:** Yes

**Suitable for wet areas:** Yes

### Features

- Tubular stainless steel construction
- Supplied with ceiling stay
- Concealed wall fixings
- Can be cut to measure on site if necessary

### Finish options

#### Powder Coated



**WH**  
White (RAL 9016)

#### Mechanical



**SP**  
Polished Stainless Steel



**SS**  
Satin Stainless Steel

### Product description

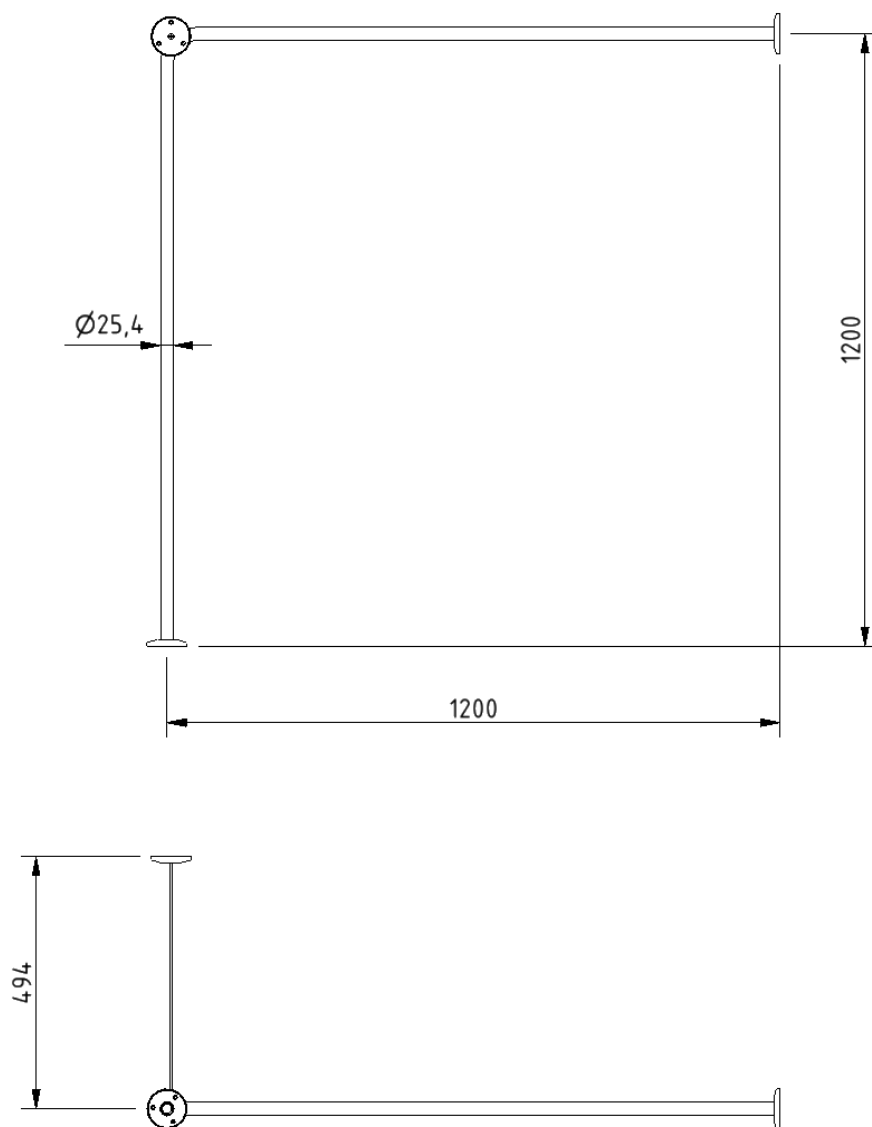
### Product code

Shower curtain rail, stainless steel, L-shaped, 1200mm x 1200mm

250502/\*\*

Replace \*\* with 2-character short code for chosen finish (Powder Coated / Mechanical).  
e.g., 250502/WH

Dimensions (mm)



## Weighted polyester shower curtain



### Product details

**Warranty:** 5 years

**Max load:** N/A

**Doc M compliant:** Yes

**Suitable for wet areas:** Yes

### Features

- Easy clean polyester material
- Weighted curtain
- Eyelet hanging
- Durable

### Product description

Weighted shower curtain, polyester, 1800mm x 2000mm, white (RAL 9016)

### Product code

250603-WH

## Dimensions (mm)

