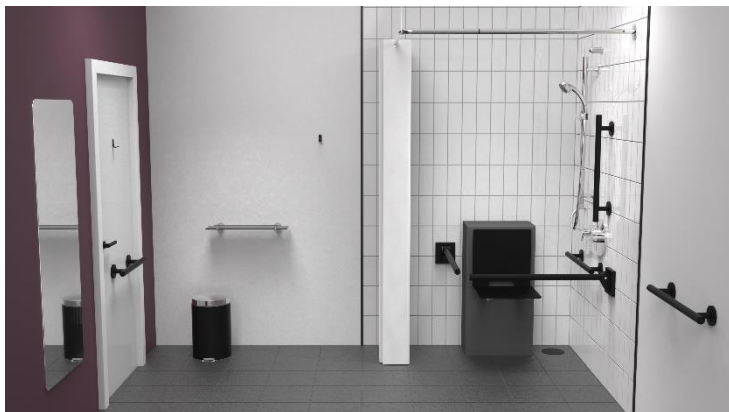


Concealed valve Doc M shower pack with stainless steel luxury concealed fixing grab rails & slimline shower seat



Product details

Warranty:	See individual products
Max load:	See individual products
Doc M compliant:	Yes
Suitable for wet areas:	Yes

Features

- Complies with Part M of the Building Regulations
- Reg 4 Certified (WRAS, NSF, Kiwa, etc.) and TMV3 approved valve & diverter
- Concealed valve and diverter with extended levers
- Concealed fixings stainless steel grab rails & hinged support rails
- Simple one box solution

Finish options

Mechanical



SP
Polished Stainless Steel



SS
Satin Stainless Steel

Powder Coated



MB
Matt Black (RAL 9005)

Product description

Product code

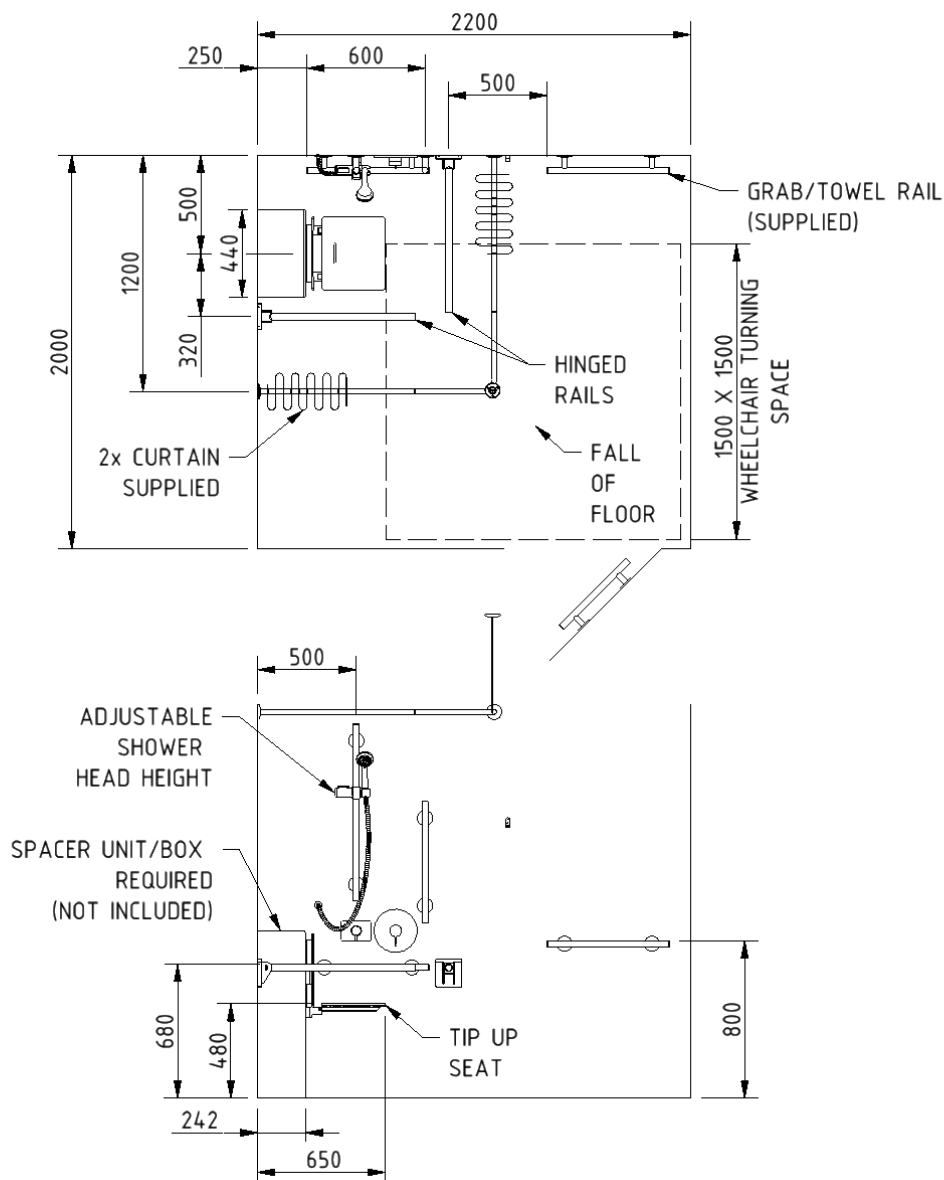
Concealed valve Doc M shower pack, stainless steel, luxury grab rails, slimline shower seat 321104/**

Replace ** with 2-character short code for chosen finish (Mechanical / Powder Coated).
e.g., 321104/SP

Pack Contents

- 1 x Slimline shower seat
- 1 x Concealed TMV3 Doc M shower valve (*always chrome*)
- 1 x Concealed Doc M shower diverter (*always chrome*)
- 1 x Antivandal overhead shower head (*always chrome*)
- 1 x Shower head and hose (*always chrome*)
- 3 x 600mm Stainless steel luxury grab rails with concealed fixings
- 1 x 450mm Stainless steel luxury grab rail with concealed fixings
- 1 x 900mm Stainless steel luxury grab rail with concealed fixings (*SP for -MB pack*)
- 2 x 800mm Stainless steel contemporary hinged support rails with concealed fixings
- 1 x 1200mm x 1200mm Stainless steel shower curtain rail (*SP for -MB pack*)
- 2 x Weighted shower curtains
- 1 x Sliding Shower head bracket
- 1 x Single robe hook

Dimensions (mm)



Fitzroy of London may occasionally need to change specification of products and/or kit contents and reserves the right to do so. We strive to keep our documentation up to date; however, we cannot guarantee this. We accept no liability for any information given on this data sheet.

Contemporary slimline wall mounted shower seat with back rest



Product details

Warranty: 5 years

Max load: 100 kg

Doc M compliant: No

Suitable for wet areas: Yes

Features

- Minimalistic contemporary design
- Brushed aluminium wall mounting system
- Drainage hole in seat
- Back rest for optimum comfort
- Lift and lock hinge mechanism

Finish options



BL
Black



WH
White

Product description

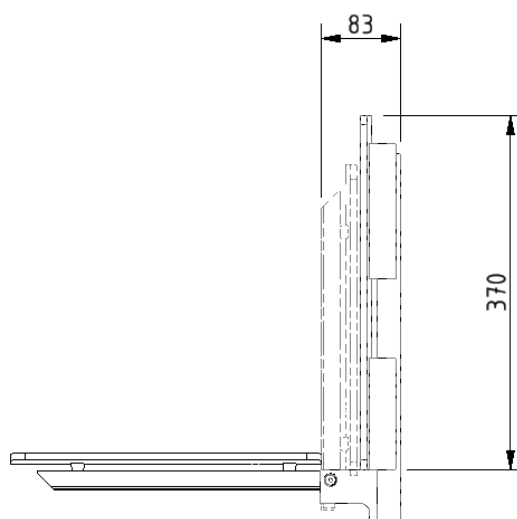
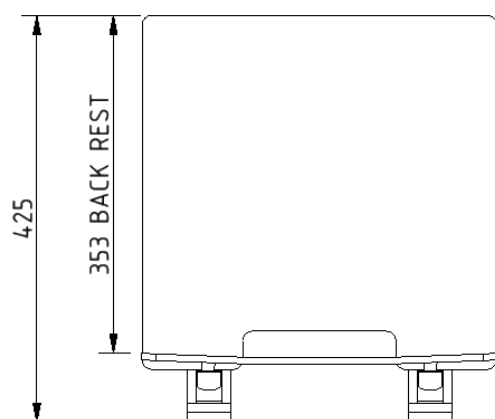
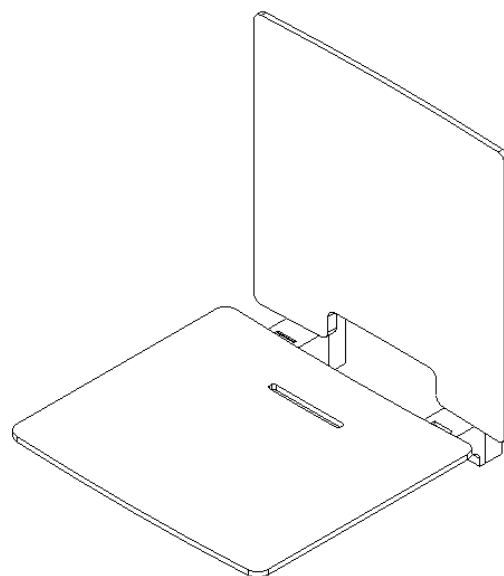
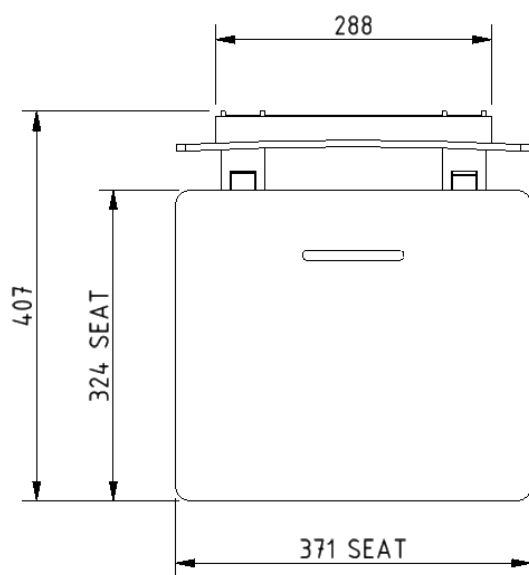
Product code

Contemporary slimline shower seat, black

331003/BL

Contemporary slimline shower seat, white

331003/WH



Luxury straight stainless steel concealed fixing grab rail



Product details

Warranty:	5 Years
Max load:	150 kg
Doc M compliant:	Yes
Suitable for wet areas:	Yes

Features

- High quality stainless steel construction
- Concealed fixing grab rails
- Complies with Doc M of the Building Regulations
- Stylish 'T-Bar' design

Finish options

Mechanical



SS
Satin Stainless Steel



SP
Polished Stainless Steel

Powder Coated



MB
Matt Black (RAL 9005)

Product description

Product code

Luxury straight, stainless steel concealed fixing grab rail, 300mm

F22-0300-LSC-**

Luxury straight, stainless steel concealed fixing grab rail, 450mm

F22-0450-LSC-**

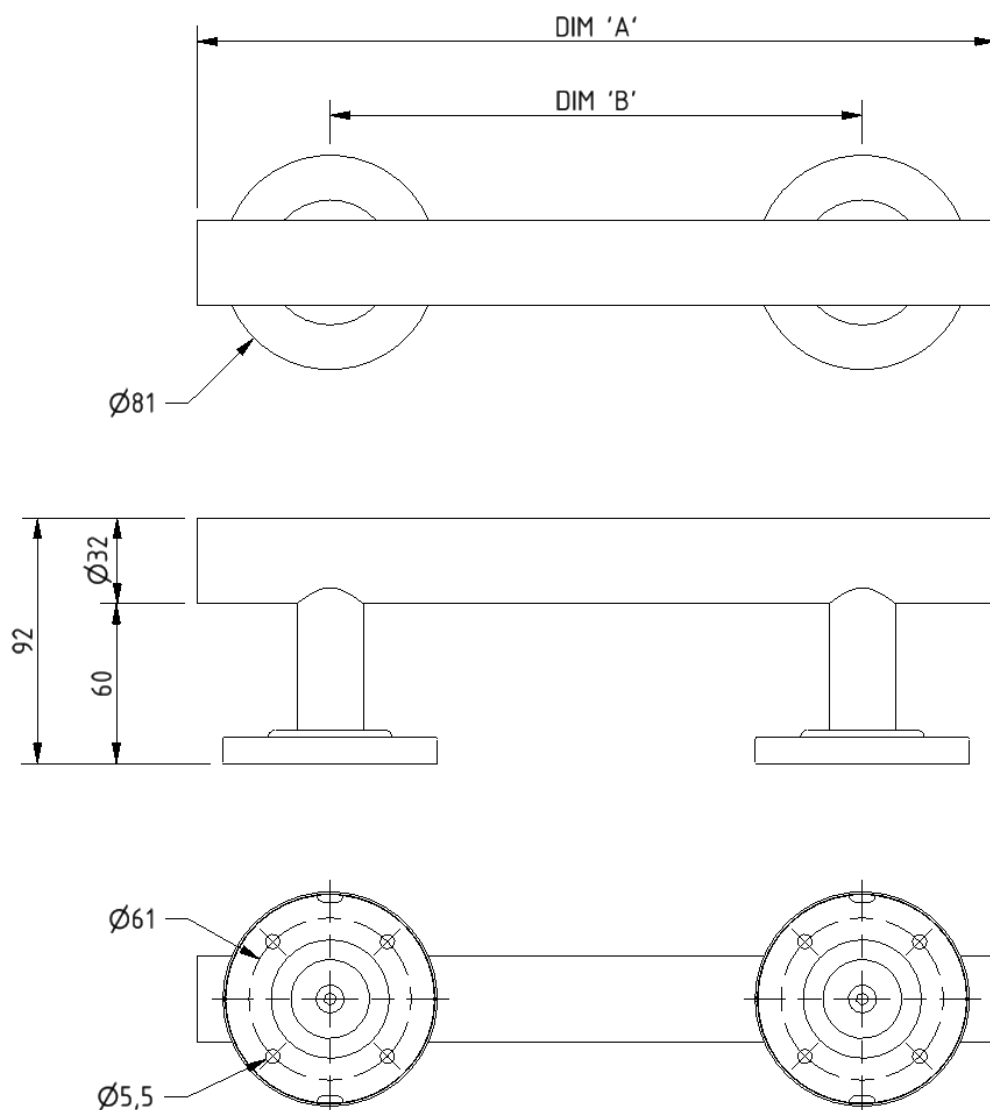
Luxury straight, stainless steel concealed fixing grab rail, 600mm

F22-0600-LSC-**

Luxury straight, stainless steel concealed fixing grab rail, 900mm

F22-0900-LSC-**

Replace ** with 2-character short code for chosen finish (Mechanical / Powder Coated).
e.g., F22-0300-LSC-SS

Dimensions (mm)


PRODUCT CODE	F22-0300-LSC	F22-0450-LSC	F22-0600-LSC	F22-0900-LSC
DIM 'A'	300	450	600	900
DIM 'B'	200	300	450	750

Luxury straight stainless steel grab rail with concealed fixings



Product details

Warranty: 5 years

Max load: 200 kg

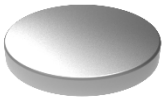
Doc M compliant: Yes

Suitable for wet areas: Yes

Features

- High quality stainless steel construction
- Concealed fixings
- Stylish T-bar design
- Complies with Part M of the Building Regulations

Finish options



SS
Satin Stainless Steel



SP
Polished Stainless Steel

Product description

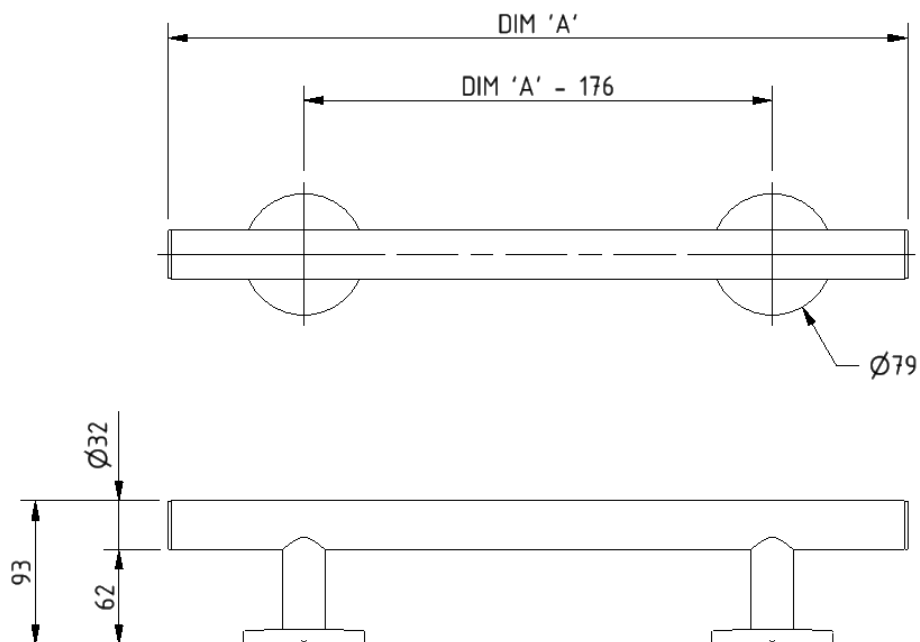
Luxury grab rail, straight, stainless steel, concealed fixings, 900mm

Product code

311490/**

Replace ** with 2-character short code for chosen finish.
e.g., 311490/SS

Dimensions (mm)



PRODUCT CODE	311435/**	311448/**	311462/**	311490/**
DIM 'A'	355	480	620	900

Contemporary single arm stainless steel friction hinged rail with concealed fixings



Product details

Warranty: 5 years

Max load: 90 kg

Doc M compliant: Yes

Suitable for wet areas: Yes

Features

- Contemporary single arm design
- Premium friction folding mechanism
- High quality stainless steel construction
- Complies with Part M of the Building Regulations

Finish options

Mechanical



SP

Polished Stainless Steel



SS

Satin Stainless Steel

Powder Coated



MB

Matt Black (RAL 9005)

Product description

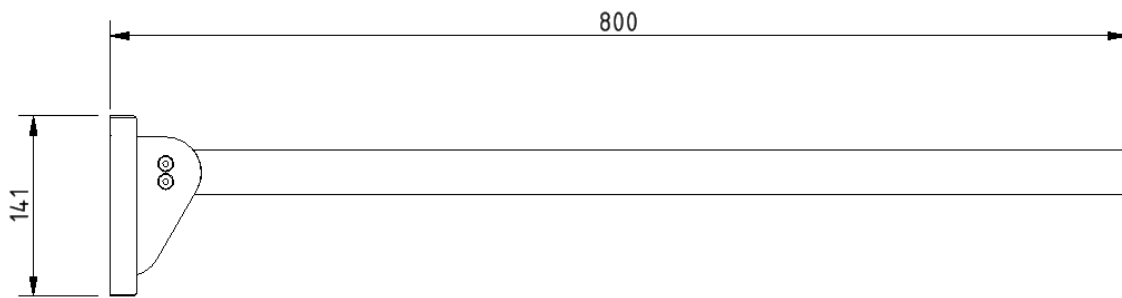
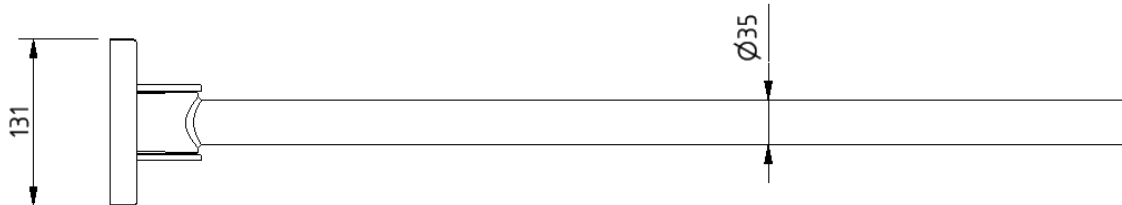
Contemporary single arm friction rail, stainless steel, concealed fixings

Product code

310480C/**

Replace ** with 2-character short code for chosen finish (Mechanical / Powder Coated).
e.g., 310480C/SP

Dimensions (mm)



Concealed TMV3 shower valve and diverter kit



Product details

Warranty: 5 years

Max load: N/A

Doc M compliant: Yes

Suitable for wet areas: Yes

Features

- Complies with Part M of the Building Regulations
- Single sequential control for both temperature and flow
- High performance even at low pressure
- Automatic shut off in the event of hot or cold water supply failure
- Easy isolation and filter removal
- Integral thermal flushing for infection control
- Brass construction
- TMV3 approved & Reg 4 Certified (WRAS, NSF, Kiwa, etc.)

Finish options

Electroplated



CP
Polished Chrome

Product description

Concealed TMV3 shower valve and diverter kit

Product code

COM-NYOPTS3650CLCKIT

Pack contents

- 1 x Concealed diverter
- 1 x Concealed valve
- 1 x Fixed shower head

Flo rates (l/min)

System pressure (bar)	0.2	0.5	1	2	3	5
Open outlet (mixed)	3.9	6.3	6	7	7.5	8

Specification

Maximum hot water supply temperature: 65 degrees Celsius

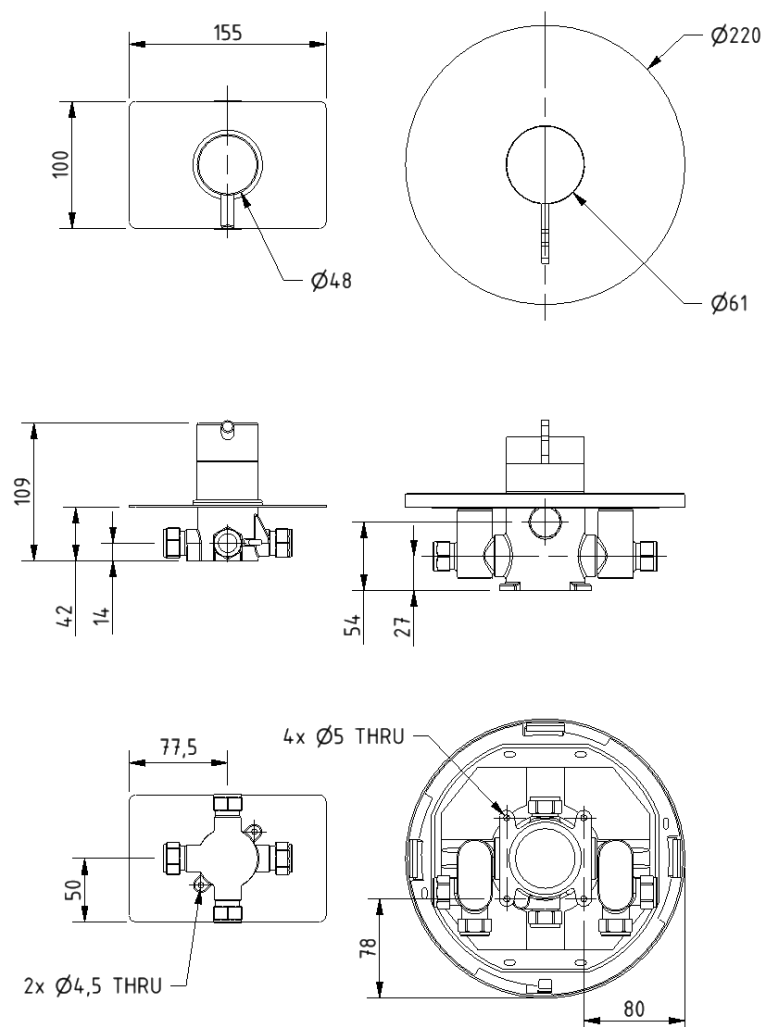
Maximum static pressure: 10 bar

Minimum dynamic pressure: 0.2 bar MIN, 5 bar MAX

Connection inlet: 15mm compression

Connection outlet: G 1/2"

Dimensions (mm)



Shower handset



Product details

Warranty: 5 years

Max load: N/A

Doc M compliant: Yes

Suitable for wet areas: Yes

Features

- Robust plastic construction
- ½" BSP threaded connection
- 3 stage flow style adjustment paddle

Finish options



CP
Polished Chrome

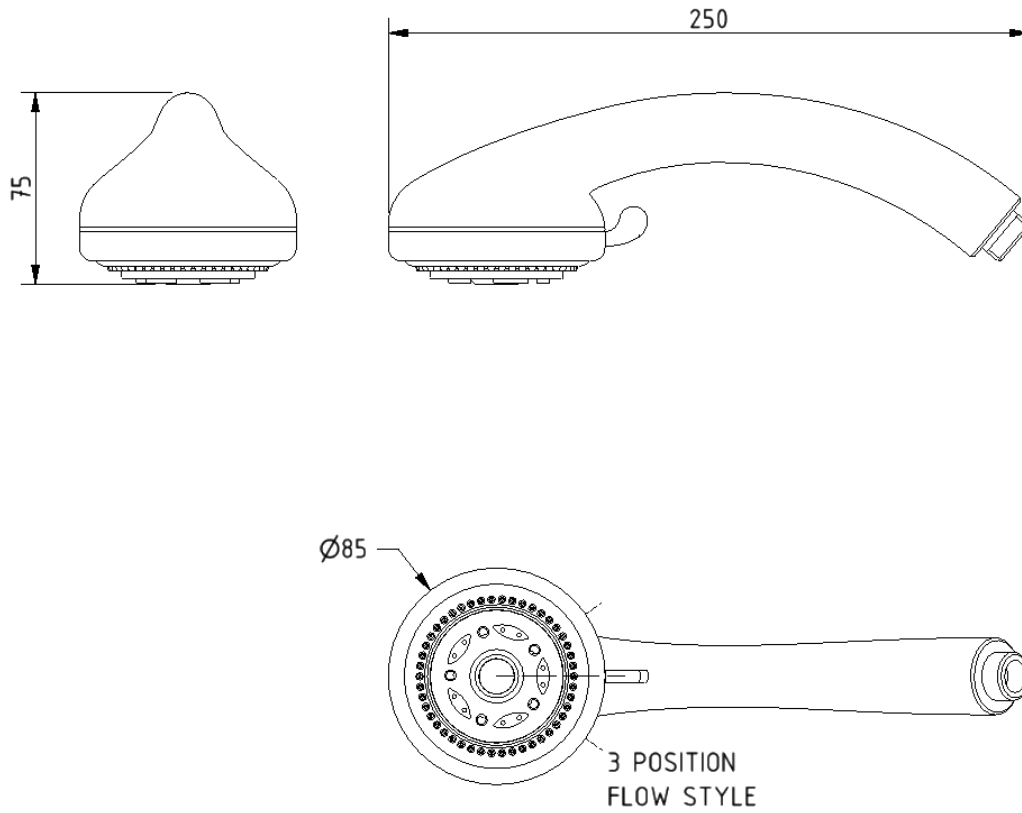
Product description

Shower handset, chrome plated

Product code

COM-BO30009CP

Dimensions (mm)



Sliding shower head bracket



Product details

Warranty: 5 years

Max load: N/A

Doc M compliant: Yes

Suitable for wet areas: Yes

Features

- Complies with Part M of the Building Regulations
- Large button for easy operation for users with limited dexterity
- Suitable for use with 32mm diameter rails

Finish options



CP
Polished Chrome

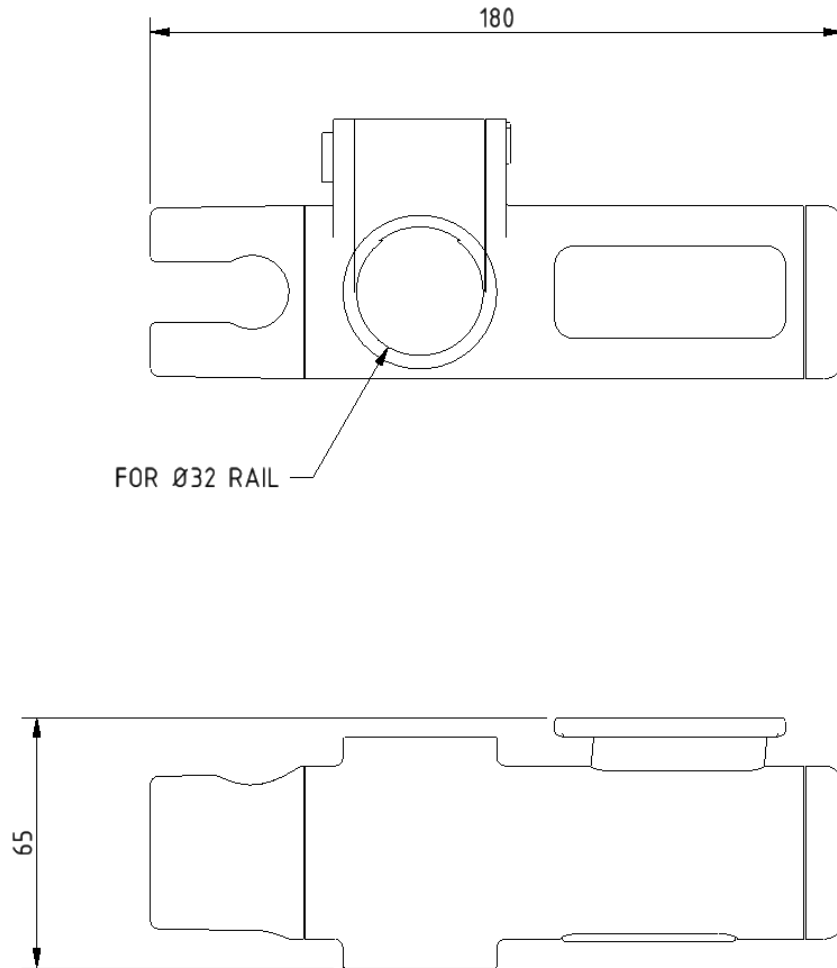
Product description

Sliding shower head bracket, for 32mm rail, chrome polished

Product code

250401

Dimensions (mm)



Shower hose, 2m chrome plated



Product details

Warranty: 1 year

Max load: N/A

Doc M compliant: No

Suitable for wet areas: Yes

Features

- Comes complete in chrome finish
- Modern style
- 1/2" BSP threaded connection on both ends

Finish options



CP
Polished Chrome

Product description

Shower hose, 2m, chrome plated

Product code

COM-30006CPX

Need some product advice? Contact our team of product specialists
+44(0)1642 710 719 | sales@fitzroyoflondon.com

www.fitzroyoflondon.com

DAT-COM-30006CPX Doc Rev 1

Fitzroy of London may occasionally need to change specification of products and/or kit contents and reserves the right to do so.
We strive to keep our documentation up to date; however, we cannot guarantee this. We accept no liability for any information given on this data sheet.

Stainless steel L-shaped shower curtain rail, 1200mm x 1200mm



Product details

Warranty: 5 years

Max load: N/A

Doc M compliant: Yes

Suitable for wet areas: Yes

Features

- Tubular stainless steel construction
- Supplied with ceiling stay
- Concealed wall fixings
- Can be cut to measure on site if necessary

Finish options

Powder Coated



WH
White (RAL 9016)

Mechanical



SP
Polished Stainless Steel



SS
Satin Stainless Steel

Product description

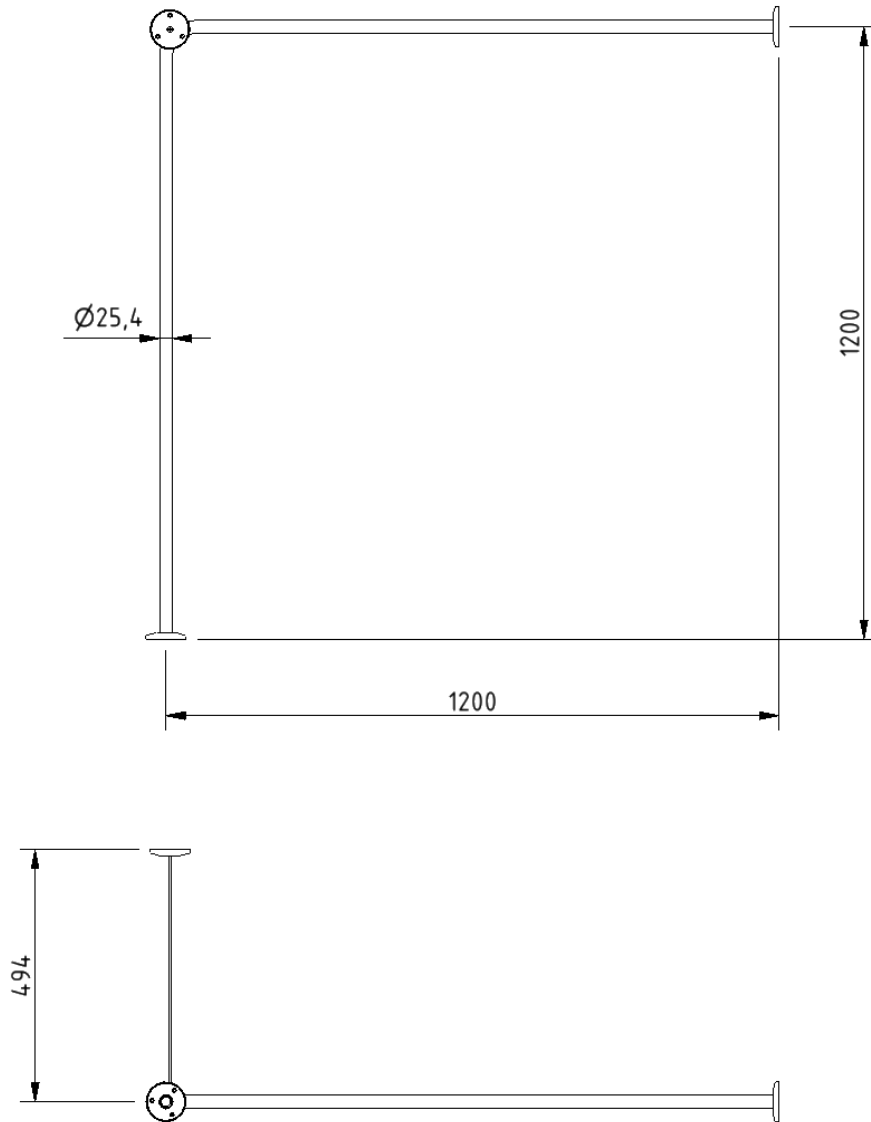
Product code

Shower curtain rail, stainless steel, L-shaped, 1200mm x 1200mm

250502/**

Replace ** with 2-character short code for chosen finish (Powder Coated / Mechanical).
e.g., 250502/WH

Dimensions (mm)



Weighted polyester shower curtain



Product details

Warranty: 5 years

Max load: N/A

Doc M compliant: Yes

Suitable for wet areas: Yes

Features

- Easy clean polyester material
- Weighted curtain
- Eyelet hanging
- Durable

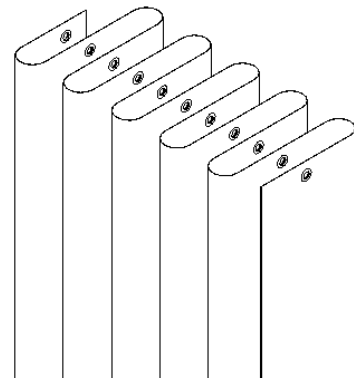
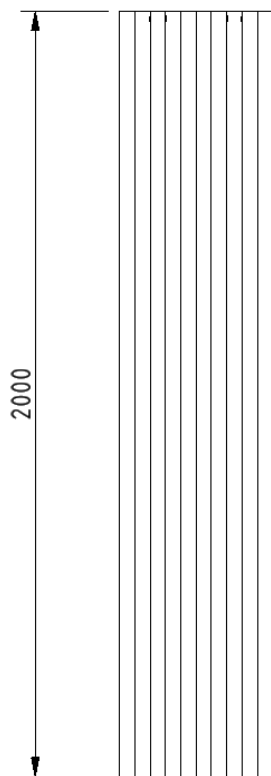
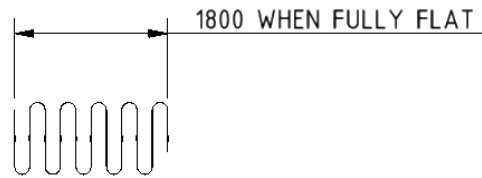
Product description

Weighted shower curtain, polyester, 1800mm x 2000mm, white (RAL 9016)

Product code

250603-WH

Dimensions (mm)



Single aluminium robe hook



Product details

Warranty: 2 years

Max load: N/A

Doc M compliant: Yes

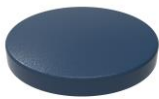
Suitable for wet areas: Yes

Features

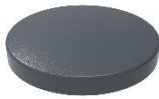
- Aluminium construction
- Colour options available for visually impaired
- Complies with Part M of the Building Regulations

Finish options

Powder Coated



DB
Dark Blue (RAL 5011)



DG
Dark Grey (RAL 7016)



GY
Grey (RAL 7005)



MB
Matt Black (RAL 9005)



WH
White (RAL 9016)

Product description

Single robe hook, aluminium

Product code

141701/**

Replace ** with 2-character short code for chosen finish (Powder Coated).
e.g., 141701/DB

Dimensions (mm)

