

TECHNICAL DATA SHEET



Product Code: 471516

Product Description: iflo Straight Rail
Anodised 2135mm



Product Specification

Material:

Silver satin anodised aluminium rail
with grey plastic wall brackets

Fittings:

All fixings included
Supplied with twelve hooks and gliders for one shower curtain

Systems:

N/A

Additional Information

A lightweight but strong aluminium rail system

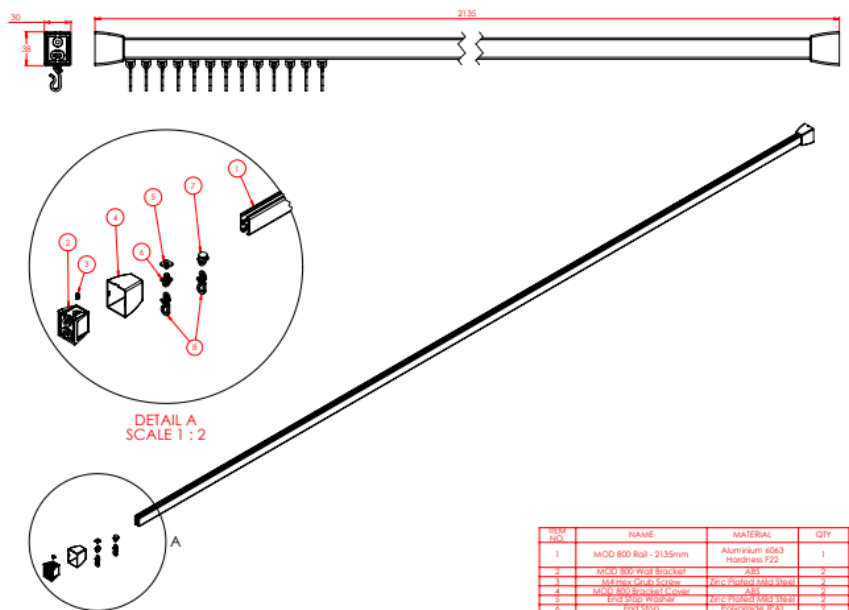
Silver satin anodised aluminium rail, grey plastic wall brackets

Pre-formed for perfect bends with a rigid 'H' section

The system features a smooth running internal hook and glider system

Do not use with abrasive cleaning products

Anodised coating to protect from rusting



ITEM NO.	NAME	MATERIAL	QTY
1	MOD 800 Rail - 2135mm	Aluminium 6063 Hardness T2	1
2	MOD 800 Wall Bracket	ABS	2
3	Mid Rail Guide Spacer	Zinc Plated Steel Wash	2
4	MOD 800 Bracket Spacer	ABS	2
5	End Stop Washer	Zinc Plated Steel Wash	2
6	End Stop	Polycarbonate (PA)	2
7	Hook/Glider	Polycarbonate (PA)	24
8	End Stop	Polycarbonate (PA)	24



'The information contained within this specification sheet is believed to be correct and complete at the time of creation. All photographs / drawings are as a guide only and do not necessarily represent the products available. Travis Perkins PLC reserves the right to change product details and price without prior notice. E&OE.' [04/2013]