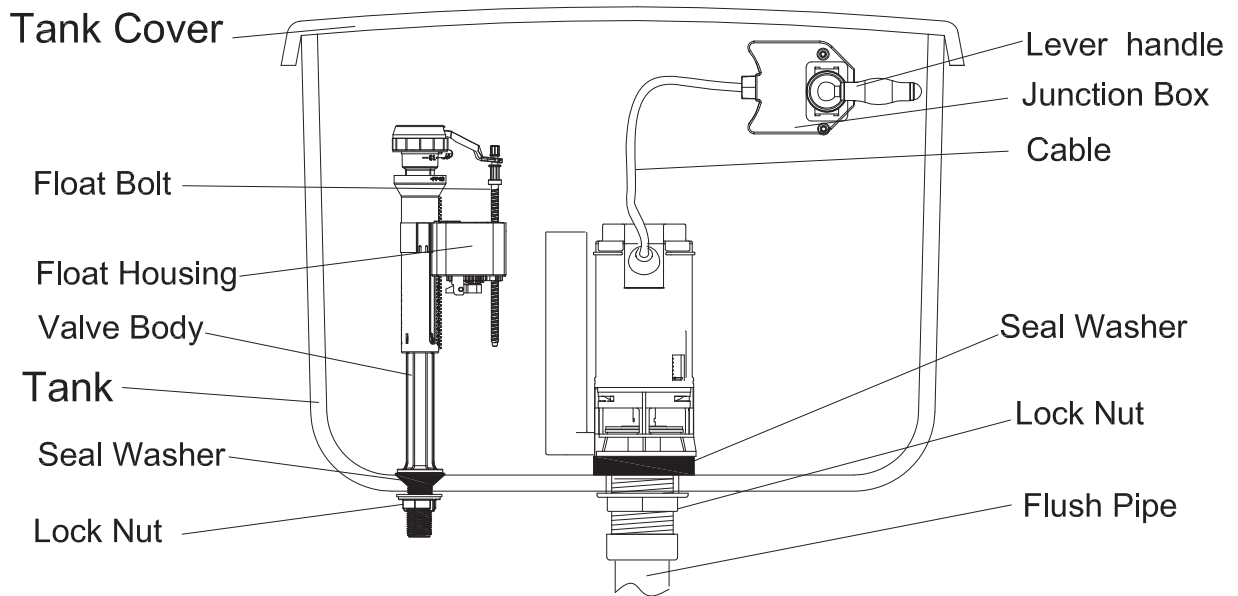


Please note: Image is for illustrative purposes only and may differ slightly to the actual product

Accessories



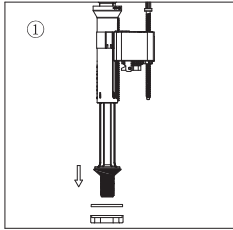
Preparation

Before installation, please remove the old fittings and clean the tank.
Please clean the water supply pipe first for newly installed one.
Do not use plumber's putty to seal the fittings.
Do not use chlorine(bleach) cleaners or related products.

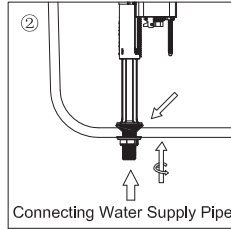
Installation guide

STEP BY STEP

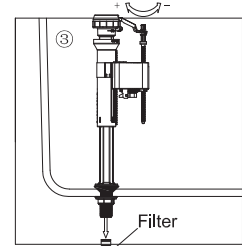
Fill Valve



Disassemble the Lock Nut and Plastic Washer for valve installation.

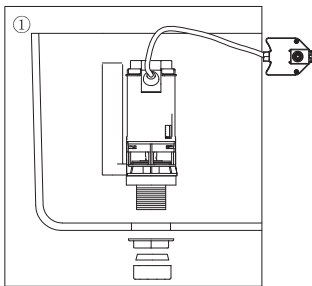


Place the inlet valve into the hole from inside of the cistern tank, re-fit the seal washer and lock nut and tighten, then connect the water supply

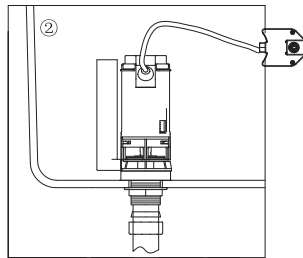


Adjusting water level by screwing Float Bolt, Take out of the Filter and clean it often.

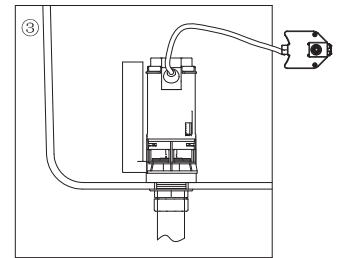
Dual Flush Valve



Disassemble Round Nut and Lock Nut for VALVE installation. Position the VALVE inside tank. Push down on the Valve Body and tightening Lock Nut.

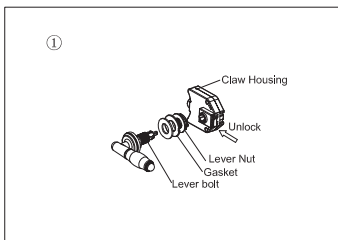


Position the TANK on the Toilet Bowl properly, Then tightening Round Nut.

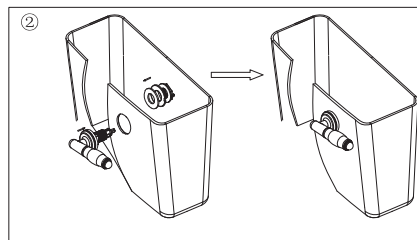


Unlock the Fixing Clip to adjust the Overflow Pipe to desired height, then lock the Fixing Clip.

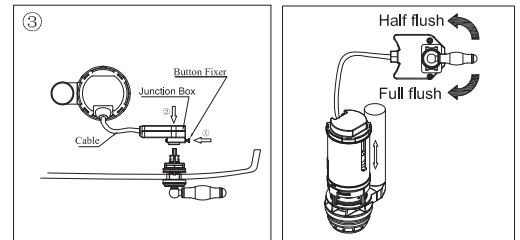
Lever



Unlock the Button Fixer of claw housing, take out the front lever, then loosen the lever nut.



Install the lever in the front hole and fix the nut properly.



Make the Cable smooth, install the Lever on the Junction Box, and then close the Tank Lid. Fill the Tank with water and push the Full&Half Button to check whether the flushing is normal or not.

Cistern Installing

Fix the cistern to the wall and mark the positions of the holes on the wall.

Screw the cistern to the wall using the fixing screws and washers supplied through the fixing holes in the back of the cistern. Ensure the tank is firmly secured to the wall.

Troubleshooting

Flush volume into the pan, not sufficient

1. Adjust the flush volume level on the syphon.
2. Check that the syphon is opening correctly.
3. If none of these resolve the issue replace the syphon.

Water running into the pan continually after flushing

1. Establish if the water level in the cistern is reaching the overflow on the syphon, if it does reach the overflow adjust the inlet valve.
2. If this continues, replace the inlet valve
3. If the water level does not reach the overflow on the syphon, remove the top section of the syphon and check the washer for damage.
4. If the washer is damaged then replace.

Maintenance

All of the maintenance measures resulting from troubleshooting above requires you to access the internals of the cistern tank and for the water supply to be turned off. Please refer to the instruction guide supplied with your cistern for further guidance.

Please note: Before carrying out any internal maintenance, turn off the water supply

Cleaning

To maintain the surface finish of your product, wipe clean after every use, using a clean damp cloth, a mild detergent mixture can be used. Do not use abrasive cleaning agents or materials which can strip and scratch the surface; the use of these agents or materials can invalidate your guarantee.