



NOT452
11.25

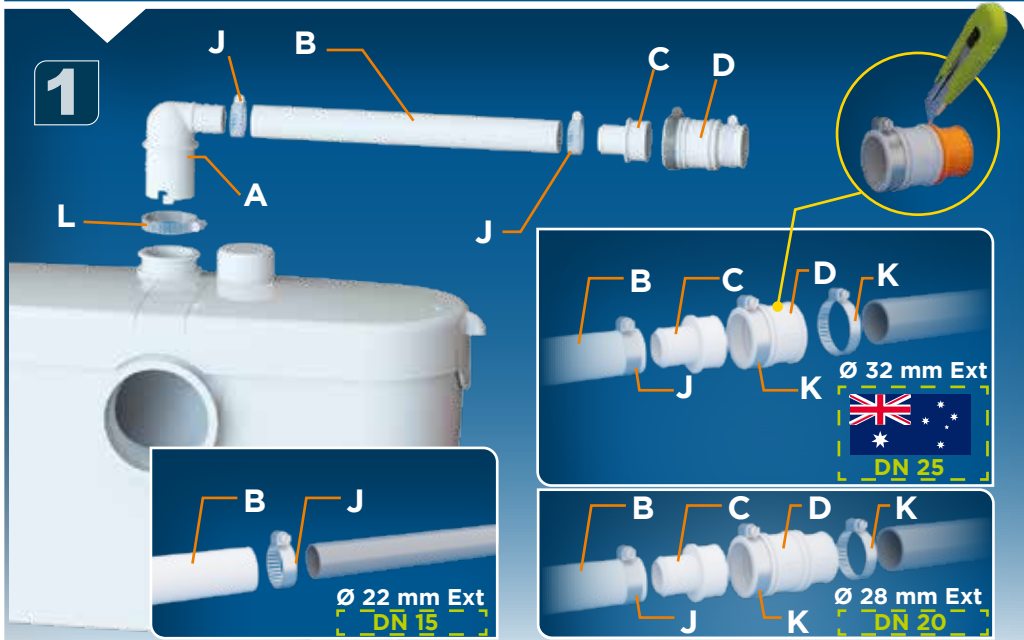
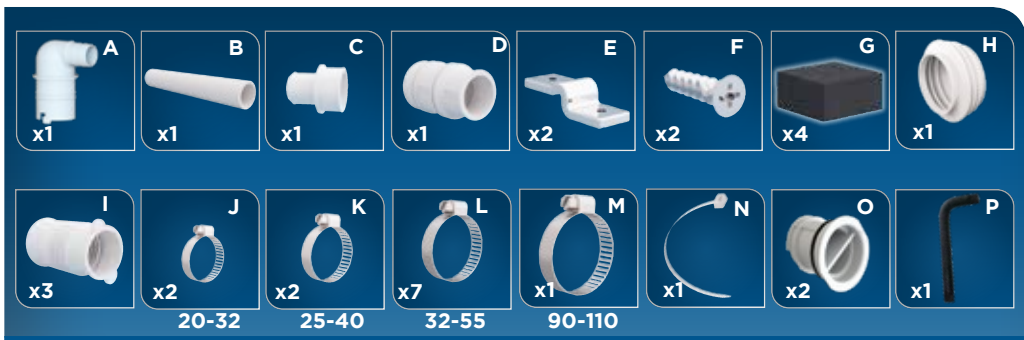
Saniaccess 3

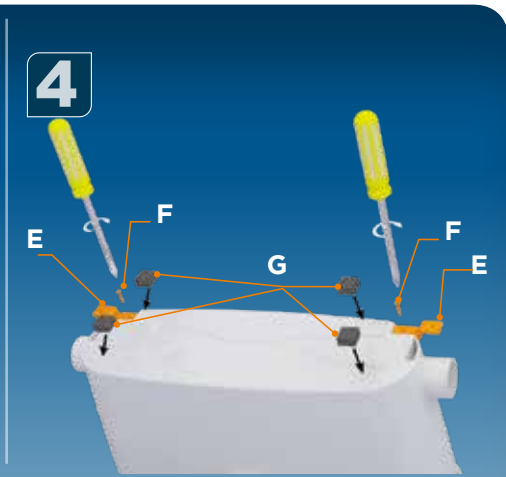
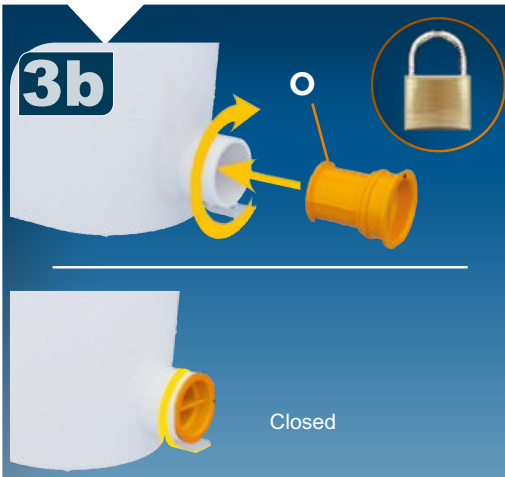


 **UK** INSTALLATION INSTRUCTIONS

CE









MAINTENANCE



1



2



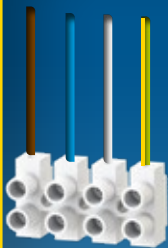
3



4



5



6



7



8





MAINTENANCE



1



2



3

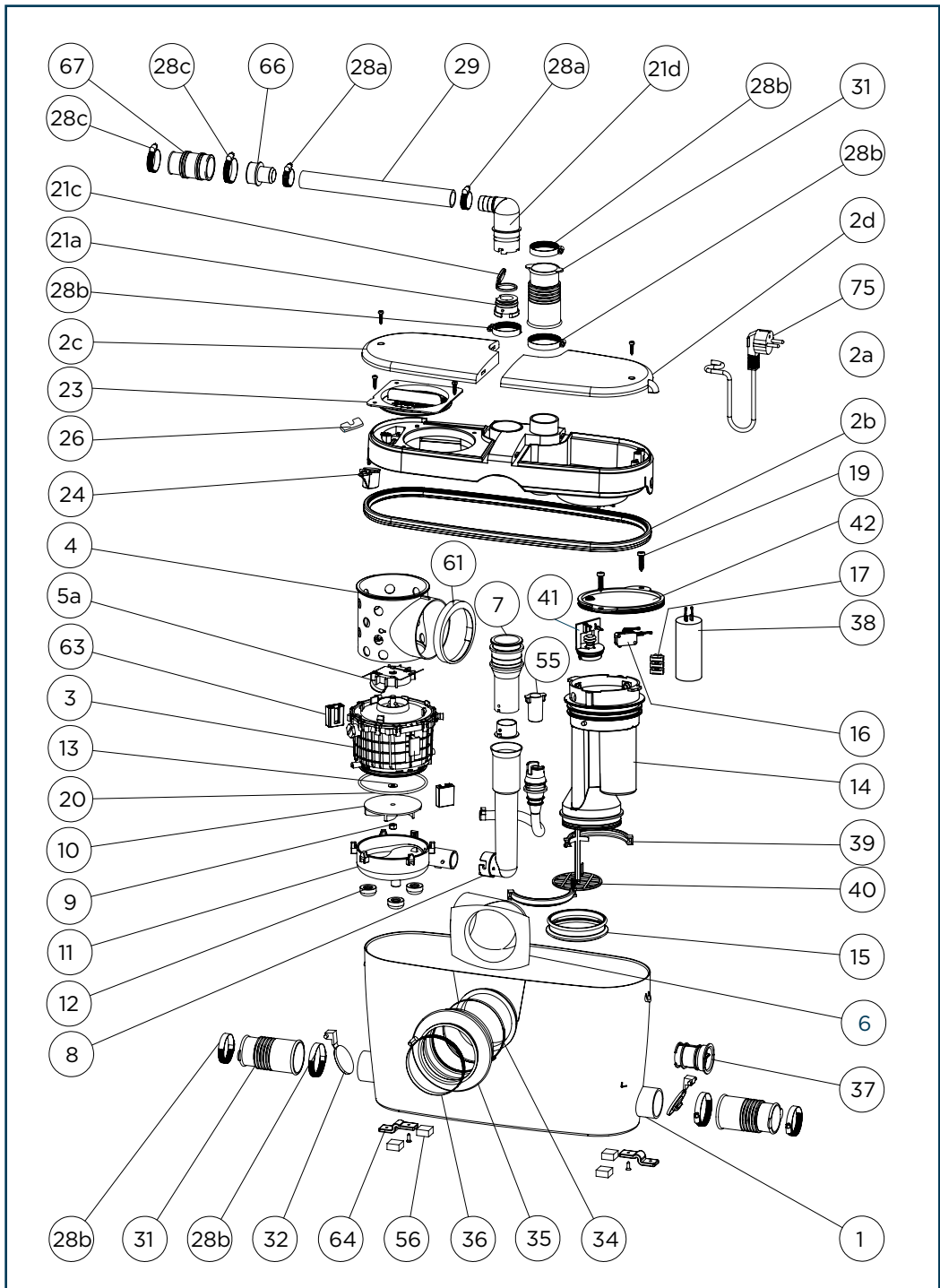


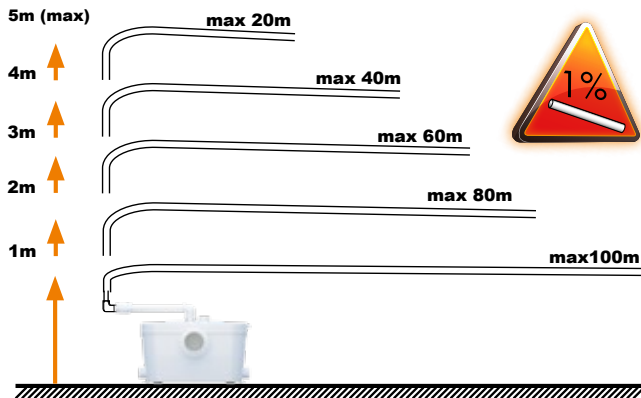
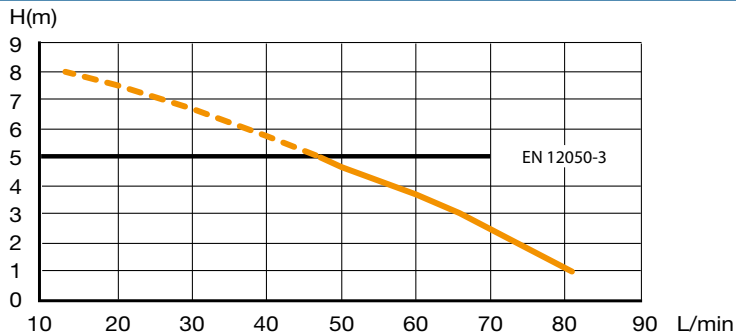
4



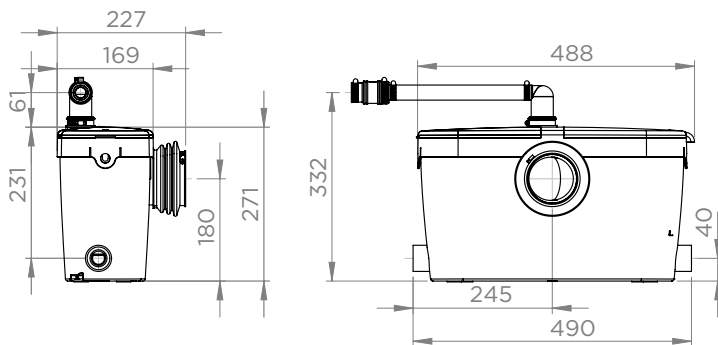
5







SANIACCESS 3
P30 - EN 12050-3
220-240V
50/60Hz
400 W- 1,9A - ⚡
IP44 - 6,4 kg



SERVICE HELPLINES

United Kingdom
 Tel. 08457 650011 (Call from a
 land line)
 Fax. 020 8842 1671

Ireland
 Tel. 1850 23 24 25 (LOW CALL)
 Fax. + 353 46 97 33 095

Service information : www.sfa.biz

