

PRO XR
1730 04.17

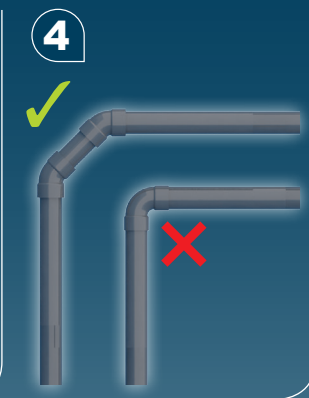
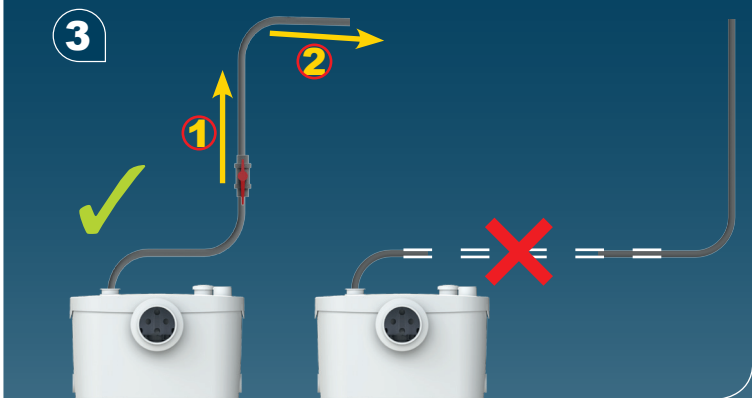
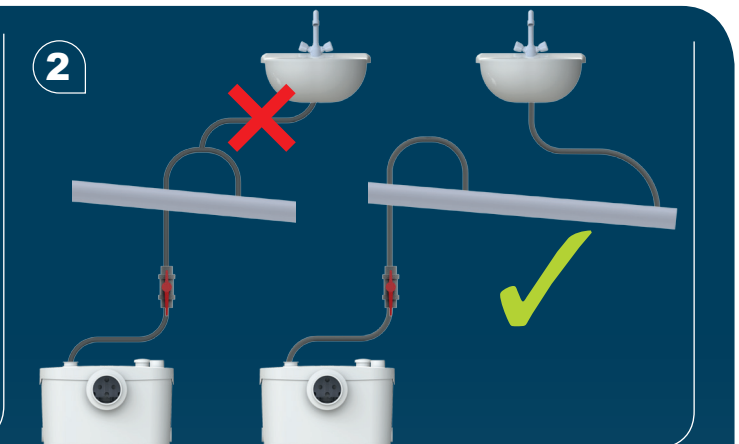
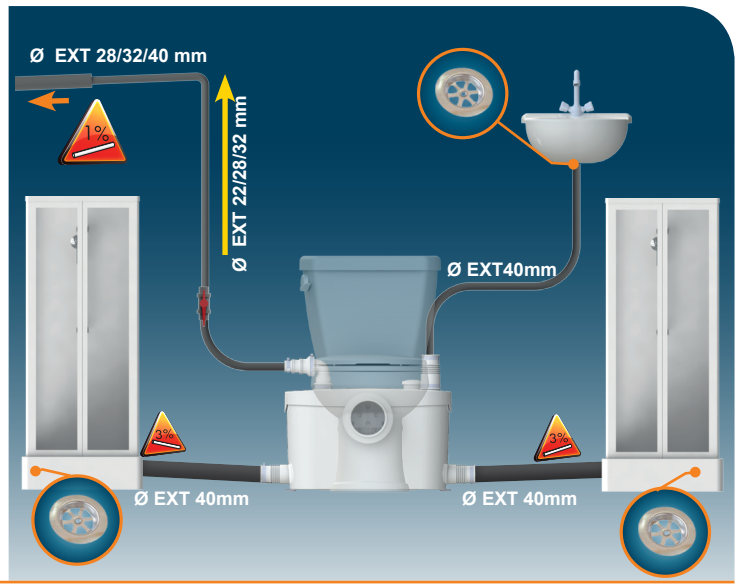
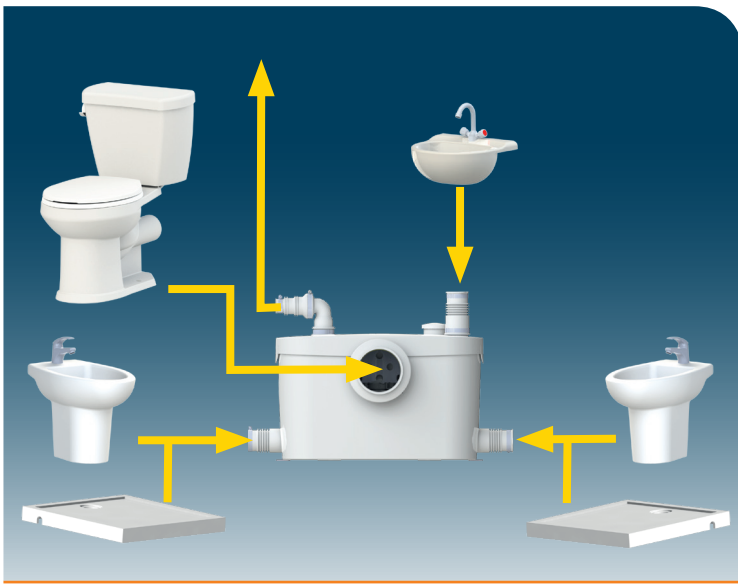
SFA

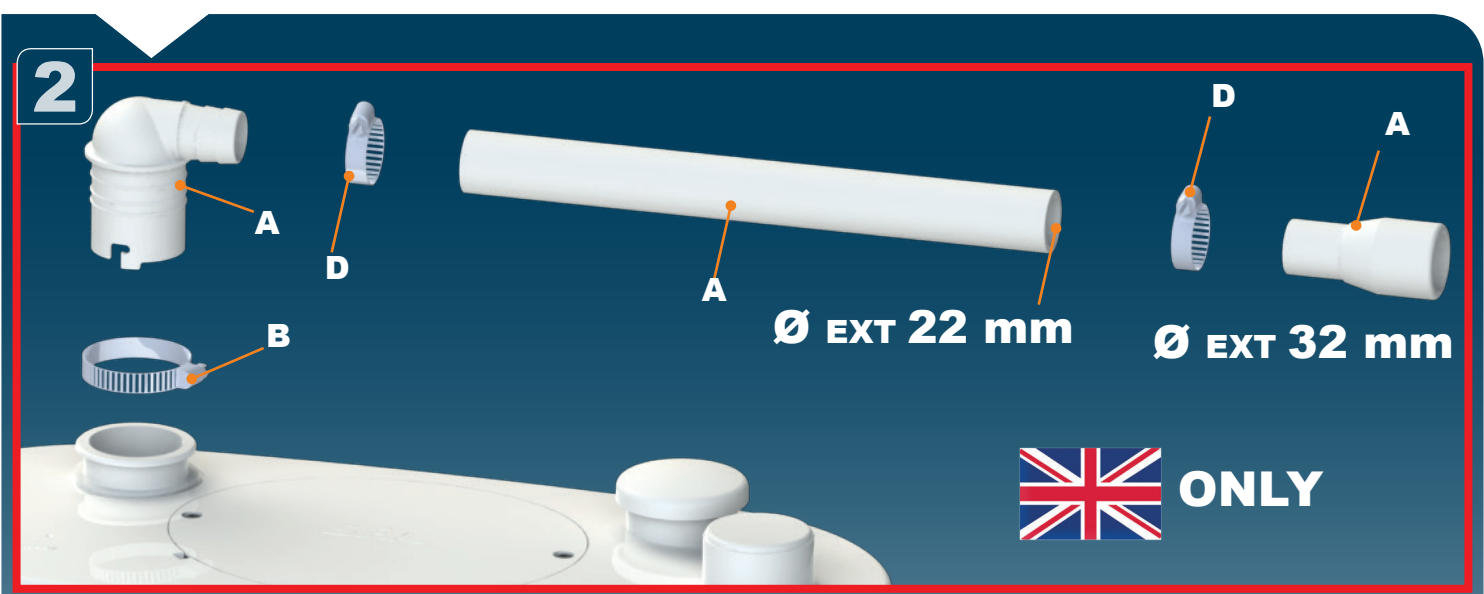
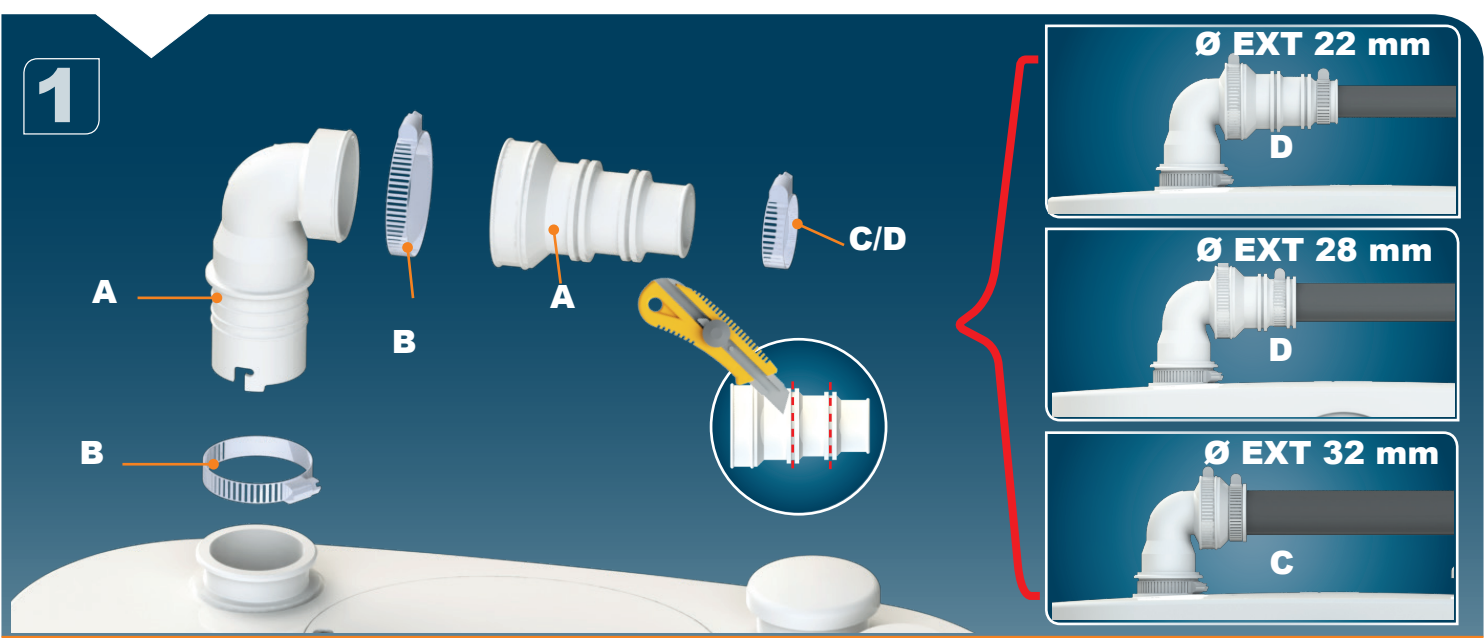
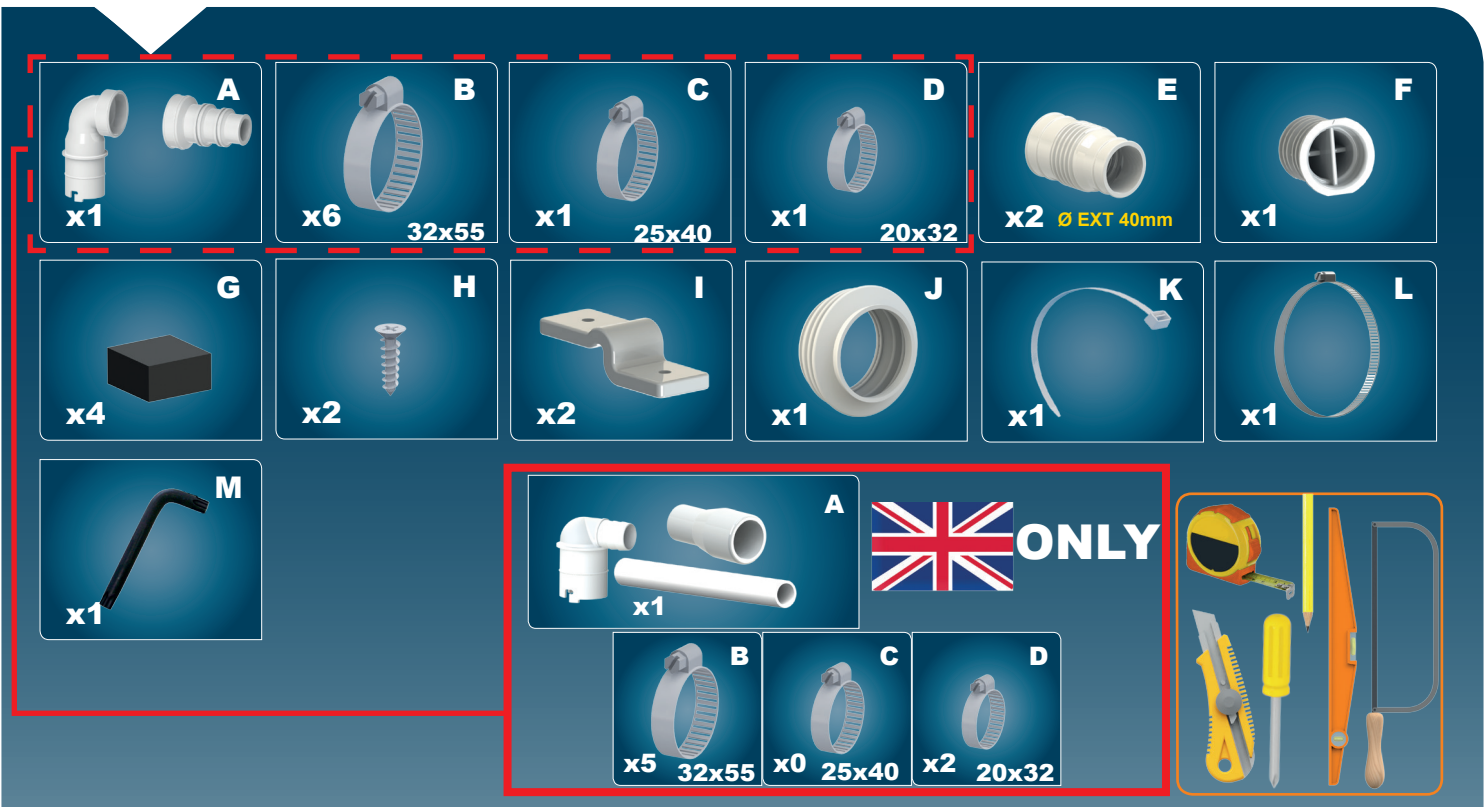


SANI**PRO**[®] XR **UP**

 INSTALLATION INSTRUCTIONS

CE

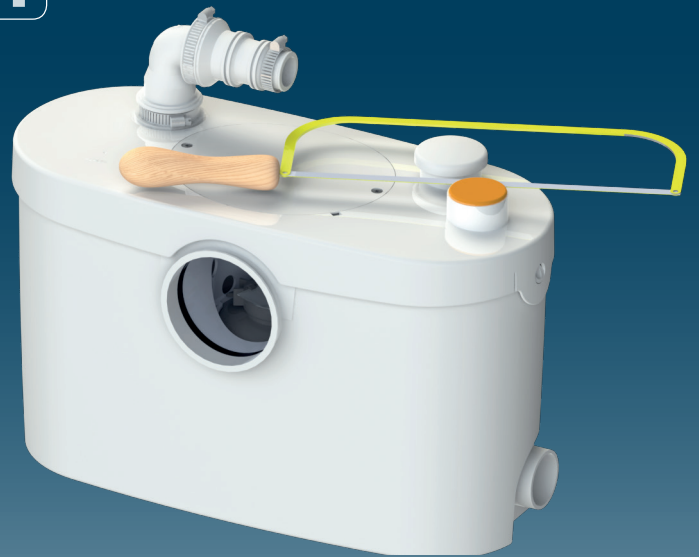




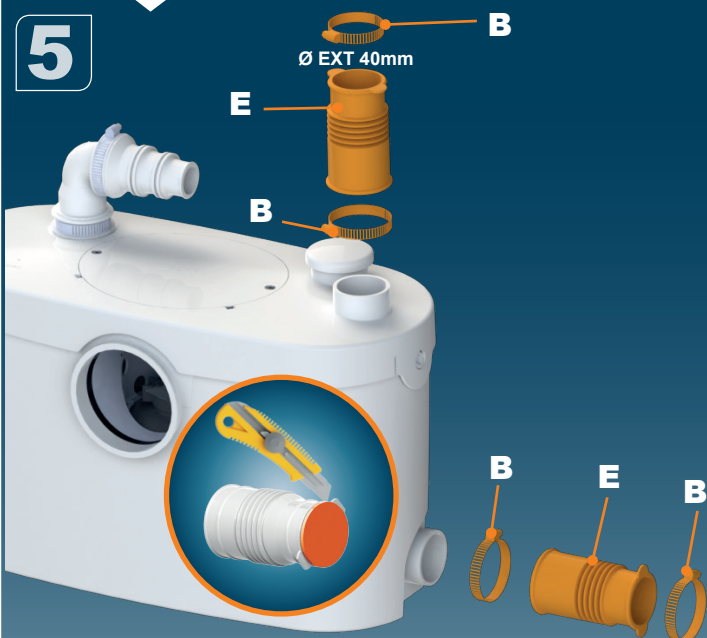
3



4



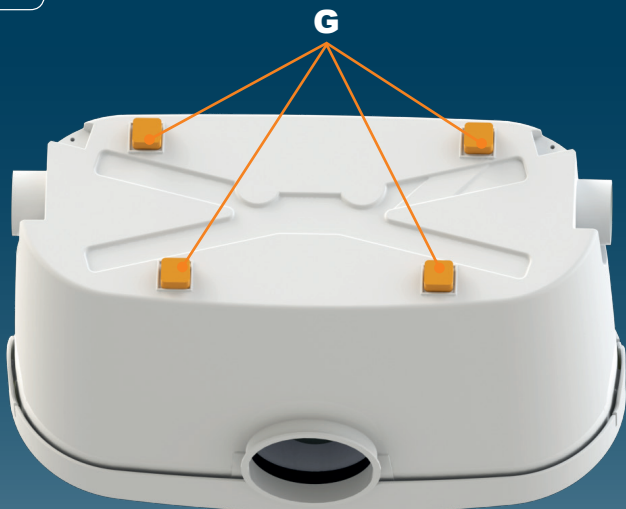
5



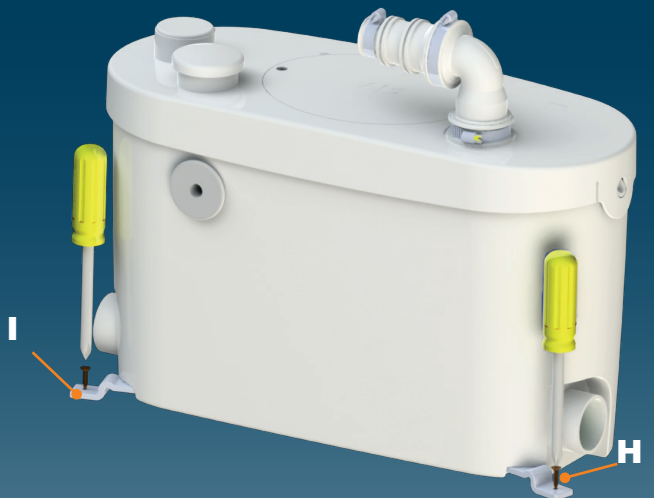
6



7



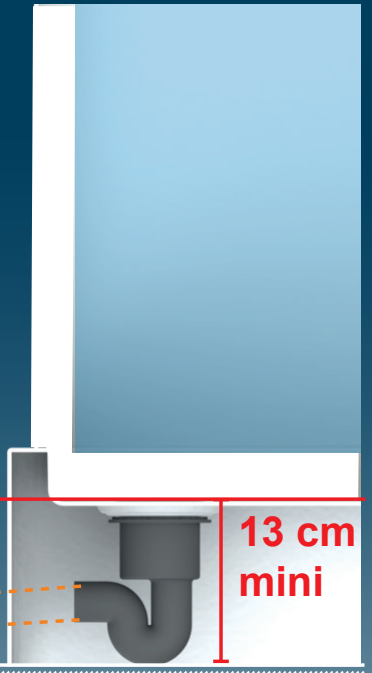
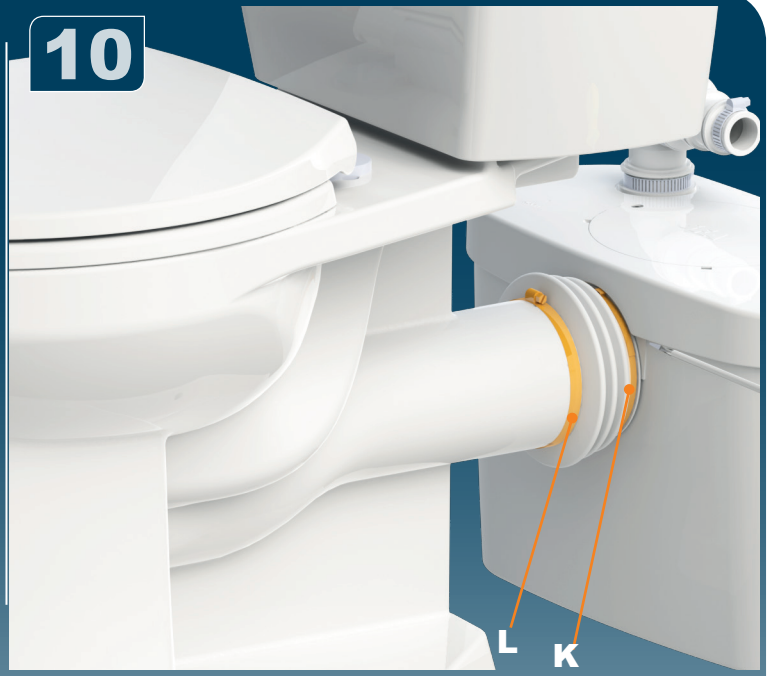
8

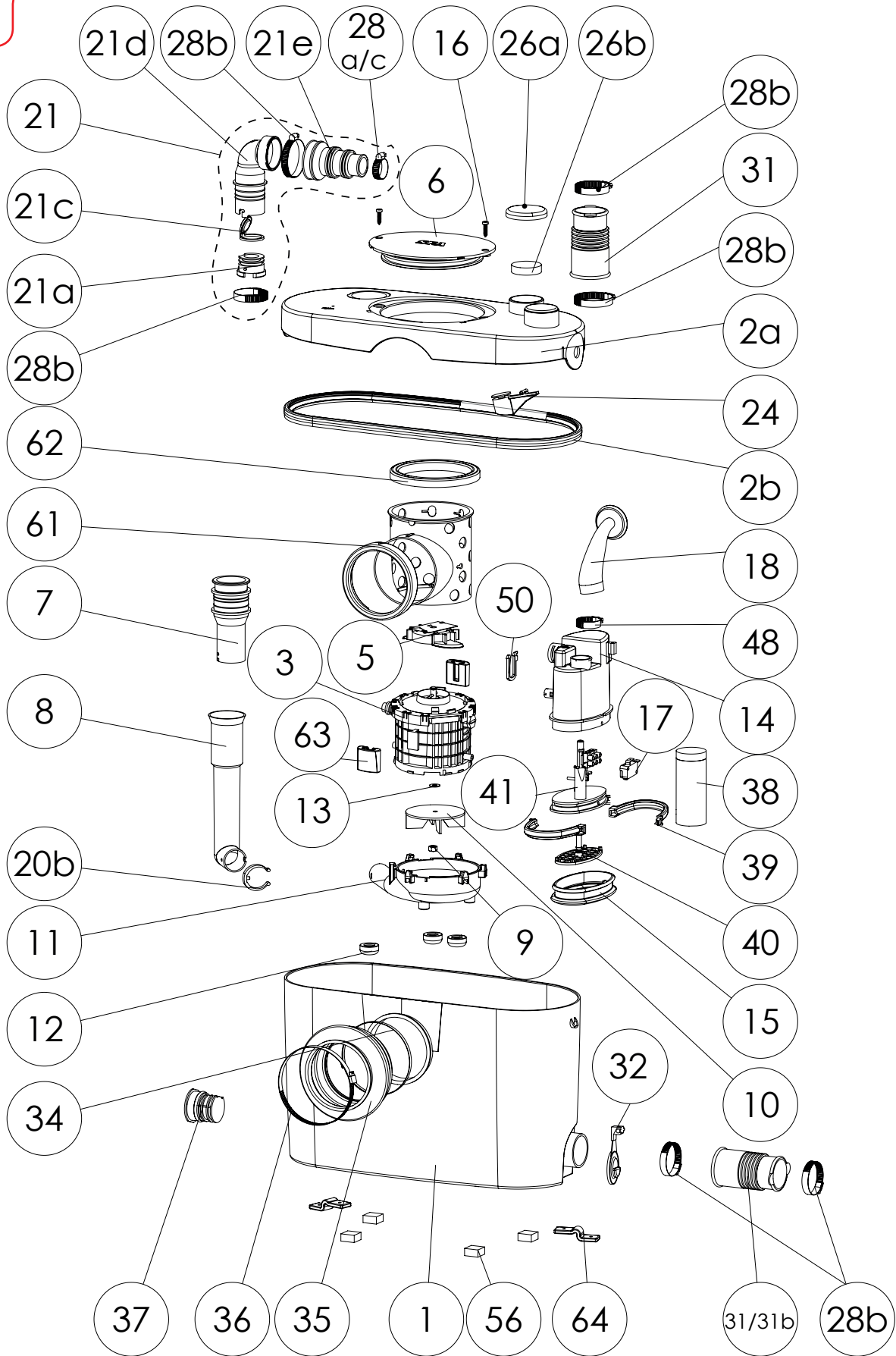
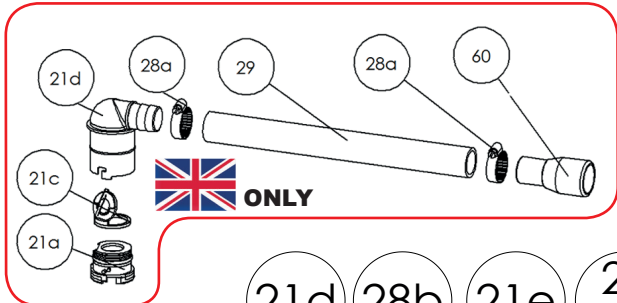


9



10





UNITED KINGDOM

SANIFLO Ltd.
 Howard House, The Runway
 South Ruislip Middx.,
 HA4 6 SE
 Tel. +44 208 842 0033
 Fax +44 208 842 1671

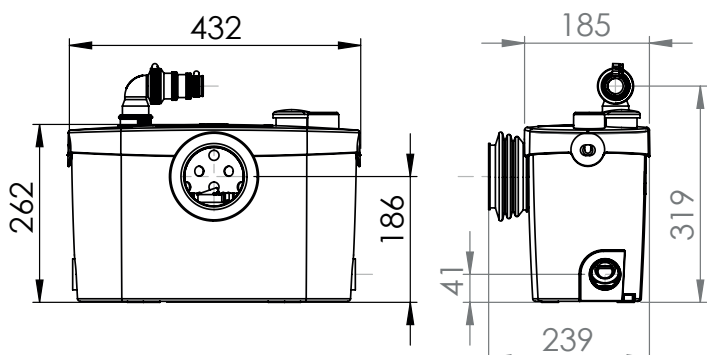
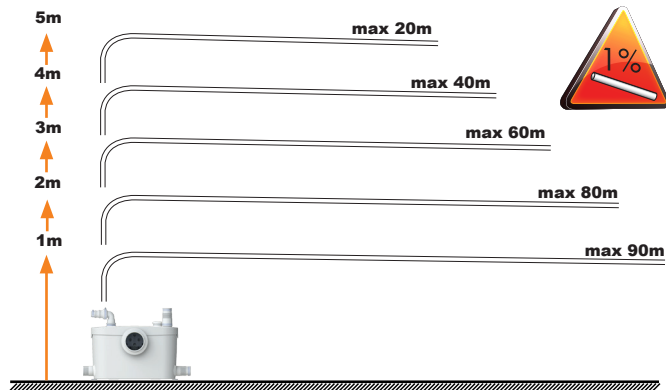
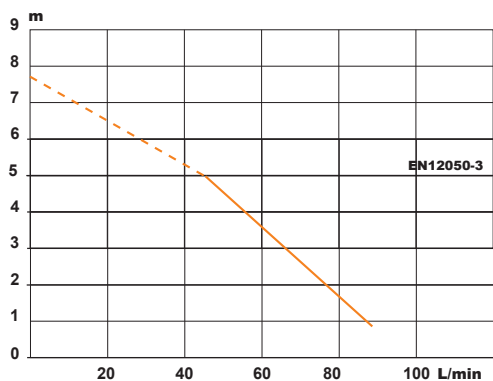
IRELAND


SANIRISH Ltd
 IDA Industrial Estate
 Edenderry - County Offaly
 Tel. + 353 46 9733 102
 Fax + 353 46 97 33 093

SERVICE HELPLINES

	TEL	FAX
United Kingdom	08457 650011 (Call from a land line)	020 8842 1671
Ireland	1850 23 24 25 (LOW CALL)	+ 353 46 97 33093

Service information : www.sfa.biz



SANIPRO XR
EN 12050-3
P 30
220-240V 50-60Hz
400W 1.9A IP44 
6,4 Kg

