



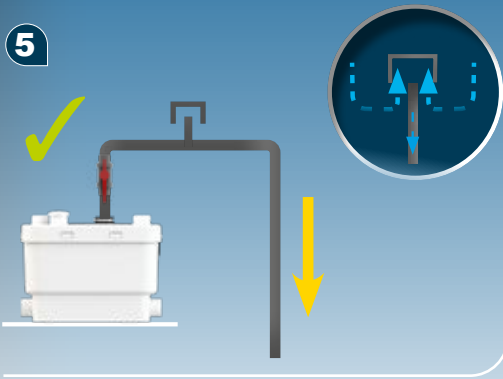
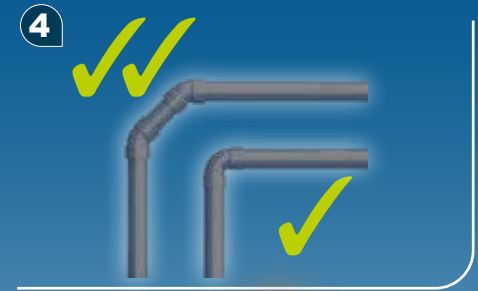
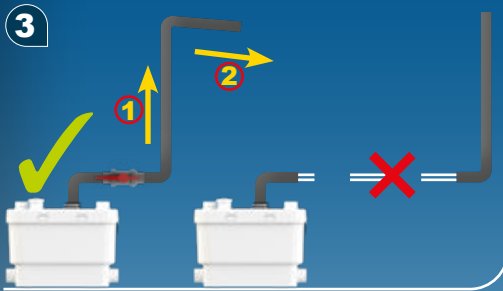
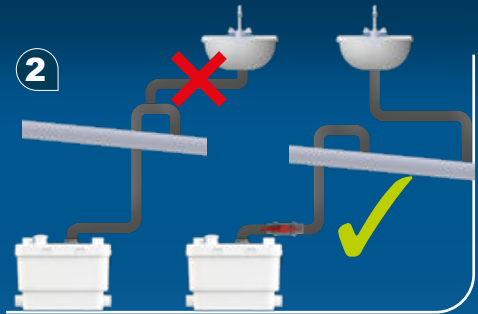
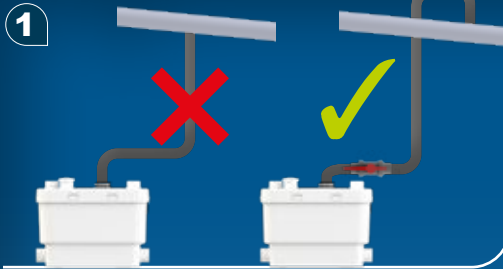
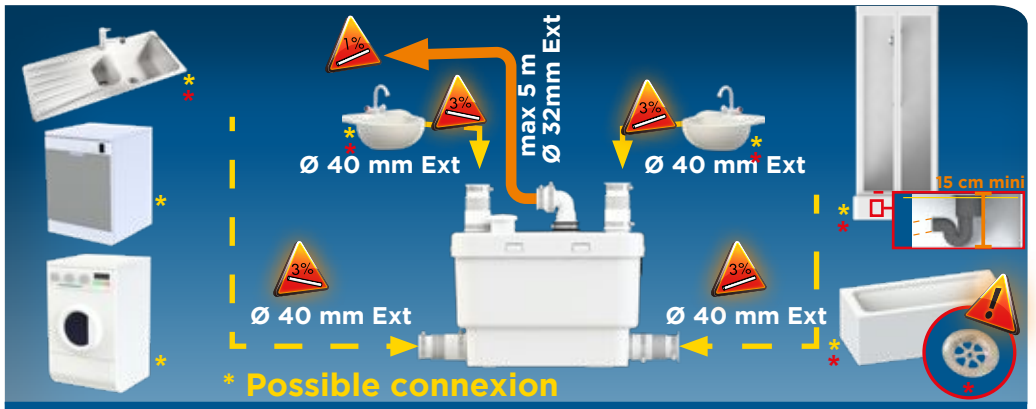
NOT1760
11.25

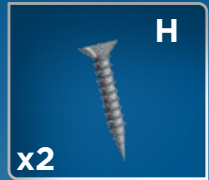
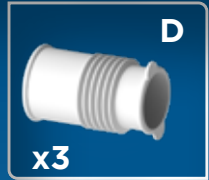
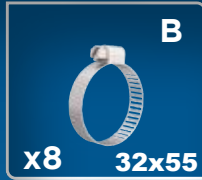
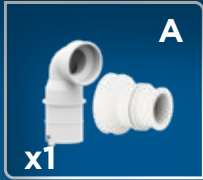
Sanivite+



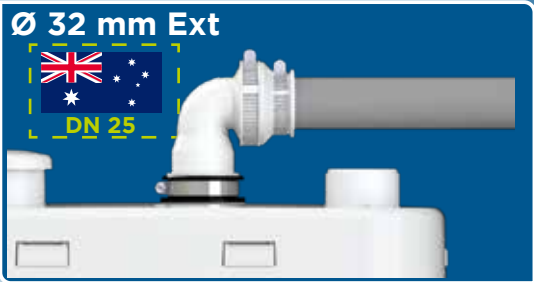
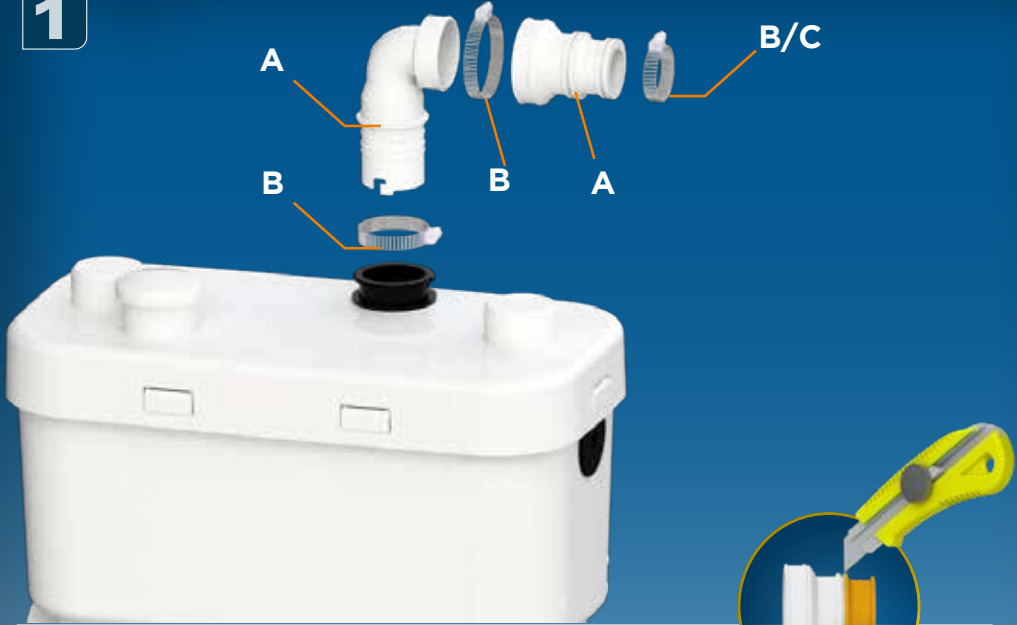
 **UK** INSTALLATION INSTRUCTIONS







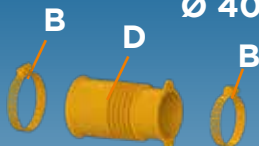
1



2A



Ø 40 mm Ext



2B



E

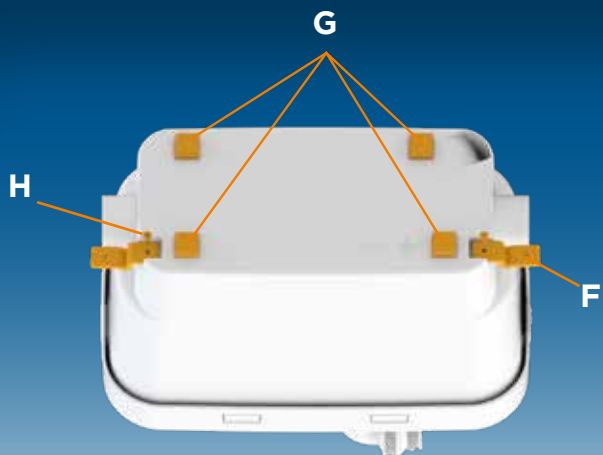


3

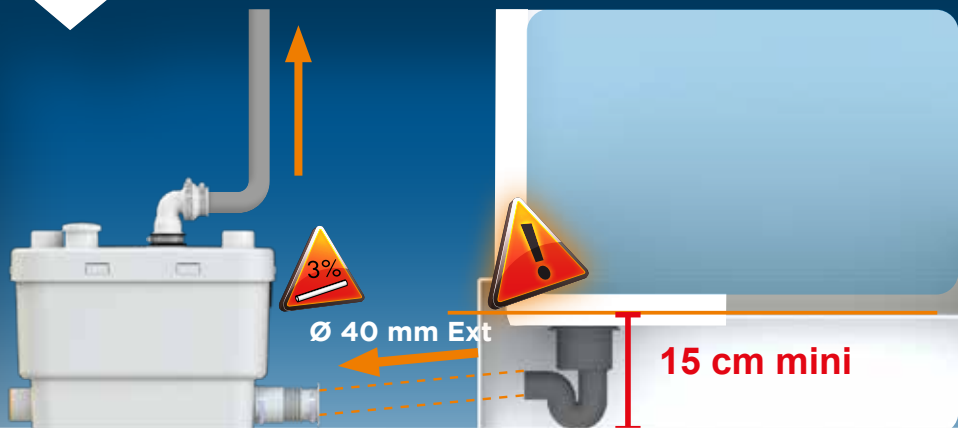
*** Possible connexion**

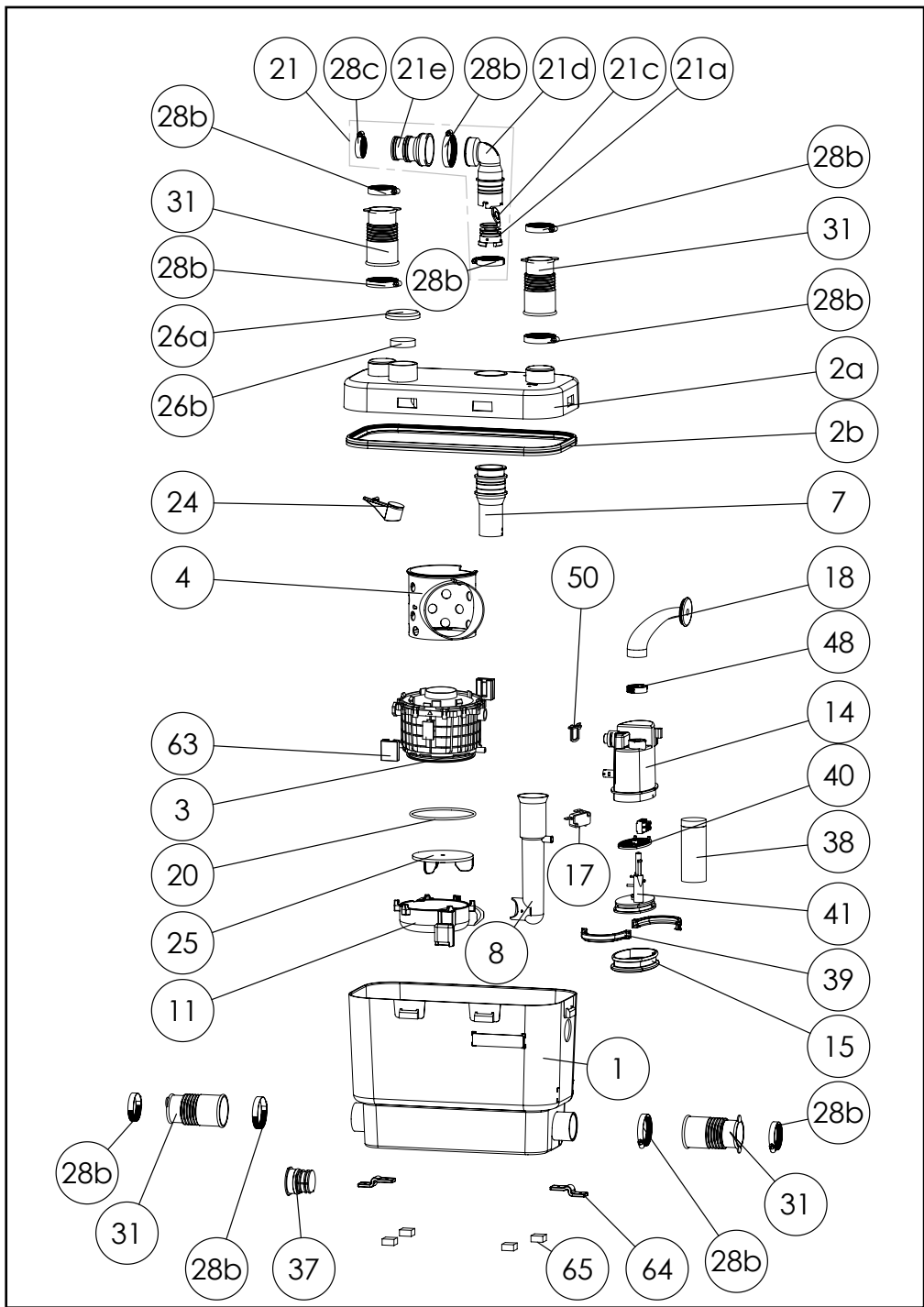


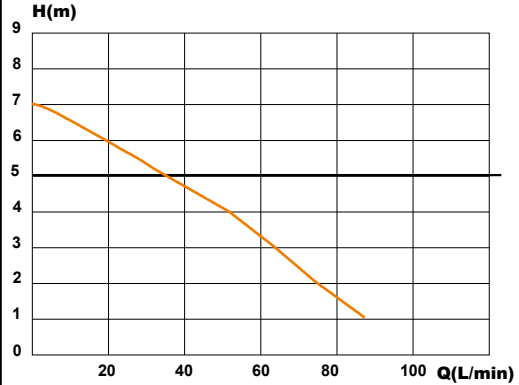
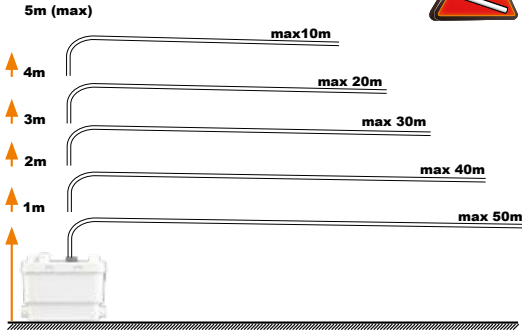
4



5





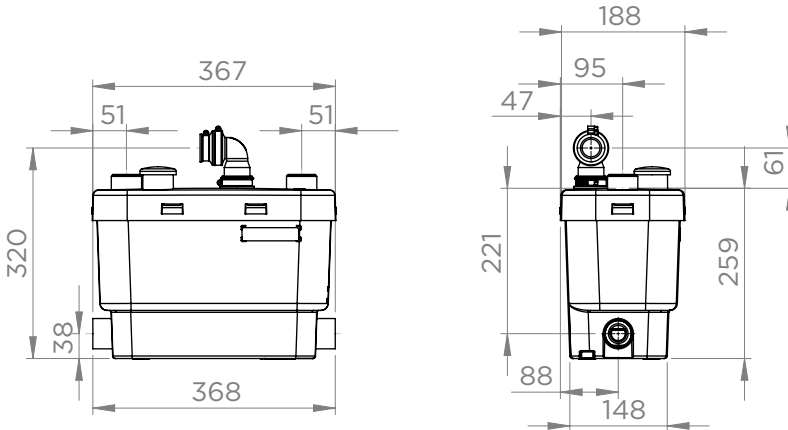


SANIVITE+

EN12050-2 V35

220-240V - 50-60Hz -400 W- 1.7A - ⊕

IP44 - 6,4 kg



SERVICE HELPLINES

United Kingdom
Tel. 08457 650011 (Call from a
land line)
Fax. 020 8842 1671

Ireland
Tel. 1850 23 24 25 (LOW CALL)
Fax. + 353 46 97 33 095

Service information : www.sfa.biz

