

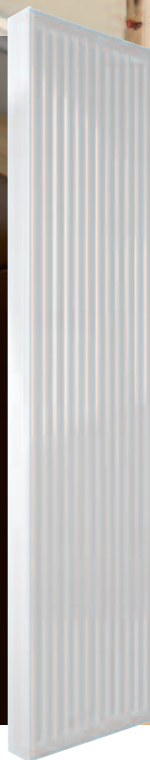
Compact

The Compact is the UK's best selling and most comprehensive range of compact radiators. They're proven, high performance winners - ideal for every room and every application where space is at a premium.

10
TEN YEAR
WARRANTY



5
FIVE YEAR
WARRANTY



200 horizontal models

Heights: 300mm to 700mm

Lengths: 400mm to 3000mm

Outputs: 190 to 5883 watts, 647 to 20073 Btu/hr

Types: P1, K1, P+ & K2

For full details please refer to pages 55-59

21 vertex models

Heights: 1800mm, 2000mm & 2200mm

Lengths: 300mm to 700mm

Outputs: 1146 to 3003 watts, 3910 to 10246 Btu/hr

Types: P2 & K2

For full details please refer to pages 61-62



Compact K3



The Compact K3 is the ideal choice for low energy systems, providing outstanding heat output from a smaller footprint.

40 K3 models

Heights: 300mm to 700mm

Lengths: 400mm to 2400mm

Outputs: 956 to 5734 watts, 3262 to 19564 Btu/hr

Type: K3



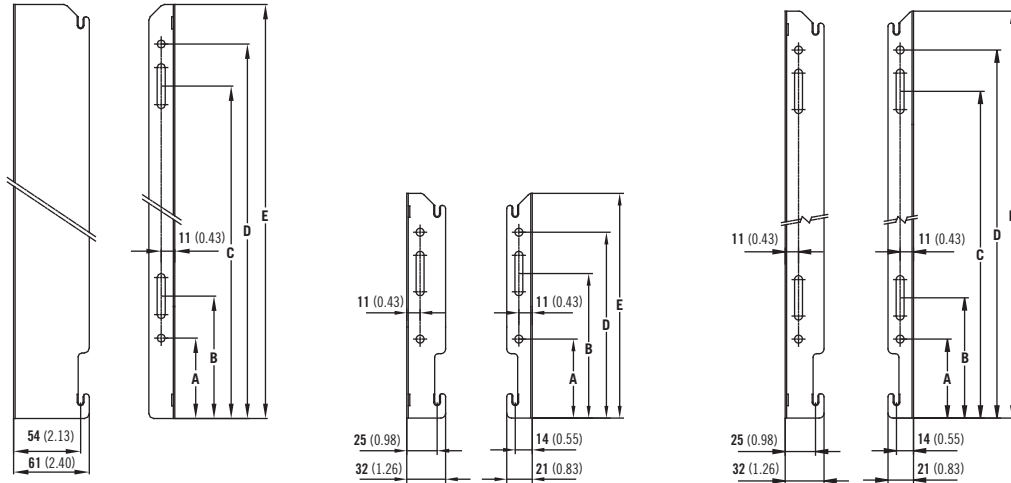
For full details please refer to pages 55-60

EN 442 Certification Data – CETIAT tested in accordance with BS EN 442

Type	P1		K1				P+				K2				K3			
Height	450	600	300	450	600	700	300	450	600	700	300	450	600	700	300	500	600	700
W/m at 75/65/20	474	619	509	756	980	1117	745	1055	1345	1530	982	1371	1732	1961	1349	2056	2389	2712
n-coefficients	1.33	1.33	1.32	1.31	1.29	1.29	1.33	1.33	1.34	1.34	1.33	1.33	1.33	1.34	1.31	1.32	1.32	1.34
Heated Surface Area (m ² /m)	1.03	1.37	2.09	3.37	4.66	5.51	2.44	3.84	5.24	6.18	3.51	5.62	7.74	9.15	5.26	9.49	11.61	13.72
Weight (kg/m)	9.82	13.00	9.31	14.51	19.70	22.90	14.29	22.04	29.80	34.50	16.80	25.90	35.00	40.53	25.20	43.40	52.50	60.77
Water Contents (l/m)	2.57	3.2	1.89	2.57	3.25	3.77	3.70	5.15	6.60	7.63	3.70	5.15	6.60	7.63	5.40	8.33	9.80	11.37
Wall to tap centre (mm)	46	46	51	51	51	51	62	62	62	62	73	73	73	73	73	73	73	73

Compact mounting brackets

All dimension in mm. Inches in brackets.



P1

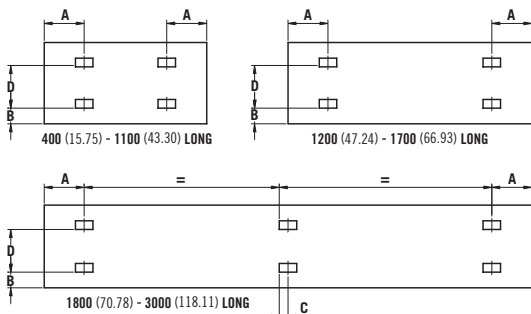
K1, P+ and K2
(300mm)

K1, P+ and K2
(Over 300mm)

Dimensions	mm	in	mm	in	mm	in	mm	in
	300	11.81	450	17.72	600	23.62	700	27.56
A	65	2.56	65	2.56	65	2.56	65	2.56
B	119	4.69	99	3.90	99	3.90	99	3.90
C	-	-	269	10.59	419	16.50	519	20.43
D	153	6.02	303	11.93	453	17.83	553	21.77
E	185	7.28	335	13.19	485	19.09	585	23.03

K1, P+, K2 and P1 lug positions

All dimensions in mm. Inches in brackets.



P1, P+ & K2

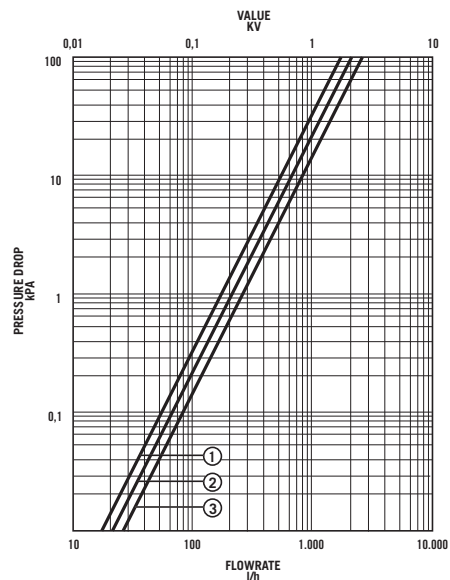
Dimensions	mm	in
A	133	5.24
B	60	2.36

K1

Dimensions	mm	in
A	400mm	117 4.61
A	500 - 3000mm	150 5.91
B	400 - 3000mm	60 2.36
C	1800 - 3000mm	17 0.67

Panel Height	D		
mm	in	mm	in
300	11.81	155	6.10
450	17.72	305	12.01
600	23.62	455	17.91
700	27.56	555	21.95

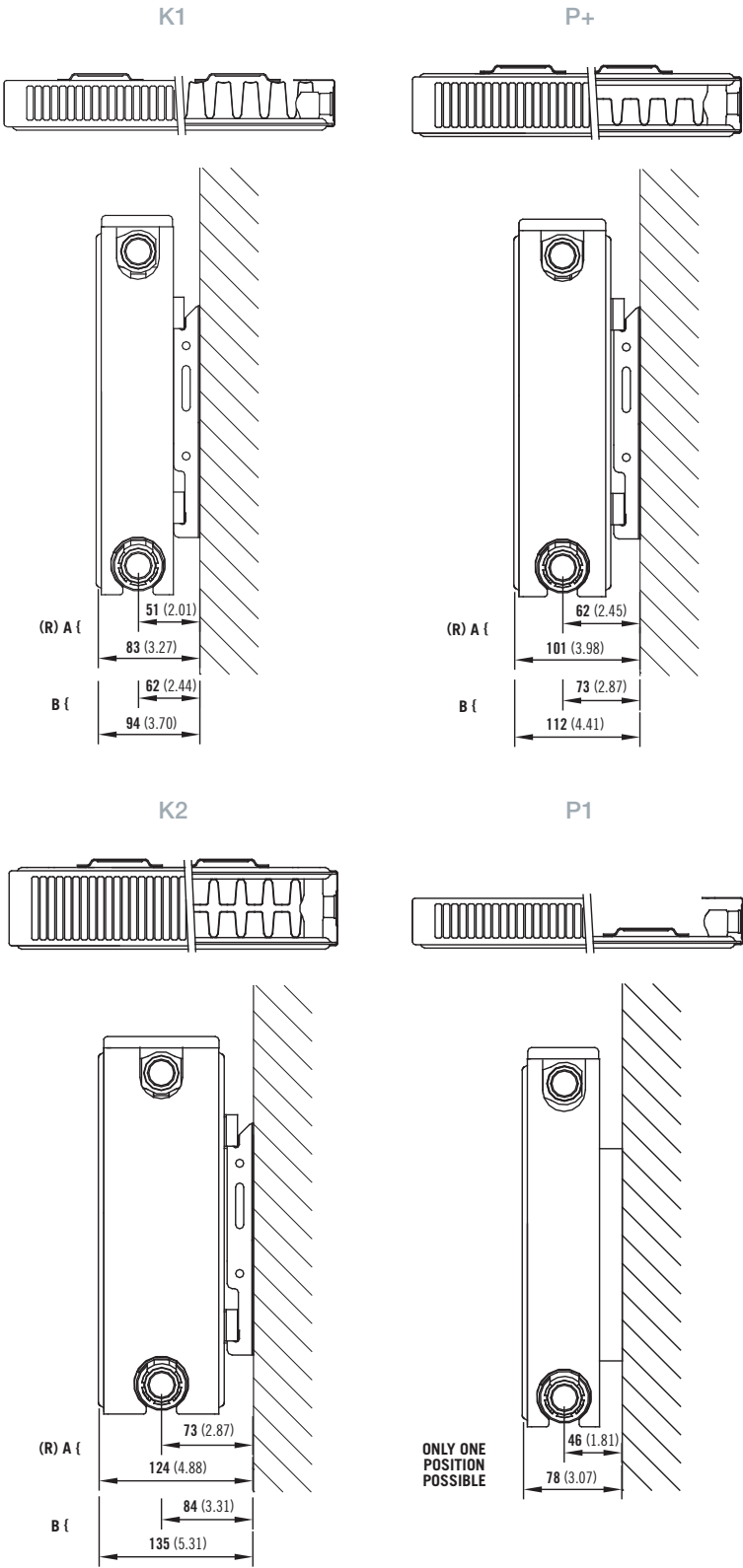
Pressure drops



- ① Type 10 (P1), 11 (K1)
- ② Type 21 (P+), 22 (K2)
- ③ Type 33 (K3)

Compact wall mounting information

All dimensions in mm. Inches in brackets.

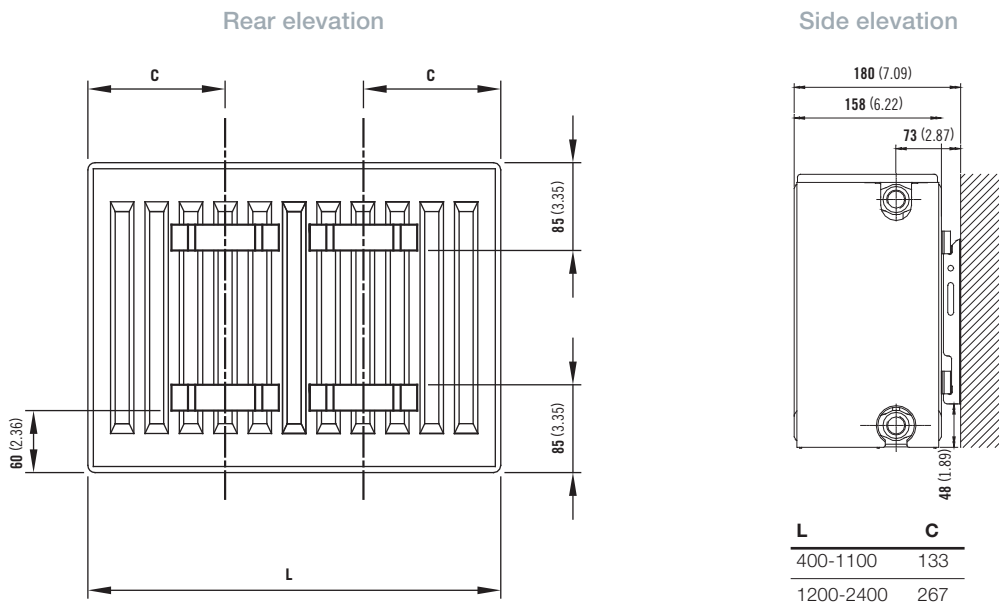


Compact bracket position

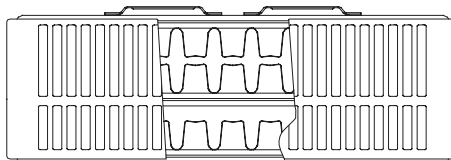
A = Closest to Wall B = Furthest from Wall (R) = Recommended Mounting Position

Compact K3 wall mounting information

All dimensions in mm. Inches in brackets.

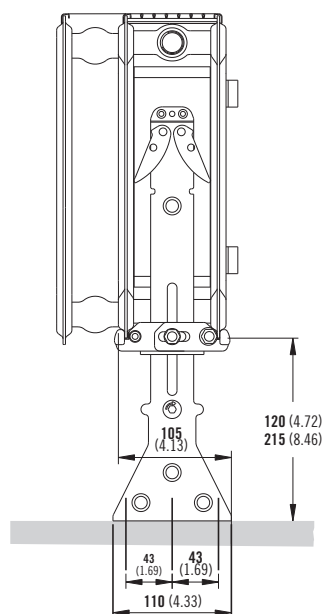


Top elevation



Compact K3 on floorstand

All dimensions in mm. Inches in brackets.



Stelrad Compact Vertex



50 Δt



Height	Length	Sections	Heat output			Heat output		
			UIN	Watts	Btu/hr	UIN	Watts	Btu/hr
1800	400	12	148095	1146	3910	31182204	1584	5405
	500	15	-	-	-	31182205	1980	6756
	600	18	148103	1719	5865	31182206	2376	8107
	700	21	148107	2006	6844	31182207	2772	9458
2000	400	12	148096	1248	4258	31202204	1716	5855
	500	15	-	-	-	31202205	2145	7319
	600	18	148104	1872	6387	31202206	2574	8782
	700	21	148108	2184	7452	31202207	3003	10246
2200	300	9	-	-	-	31222203	1386	4729
	400	12	148097	1356	4627	31222204	1848	6305
	500	15	-	-	-	31222205	2310	7882
	600	18	148105	2034	6940	31222206	2772	9458
	700	21	148109	2373	8097	-	-	-

40 Δt



30 Δt



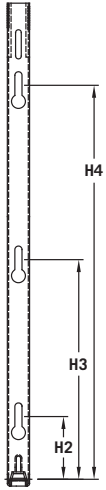
Height	Length mm	Sections	Heat output			Heat output			Heat output			Heat output		
			UIN	Watts	Btu/hr	UIN	Watts	Btu/hr	UIN	Watts	Btu/hr	UIN	Watts	Btu/hr
1800	400	12	148095	857	2925	31182204	1185	4043	148095	590	2014	31182204	816	2783
	500	15	-	-	-	31182205	1467	5004	-	-	-	31182205	1000	3412
	600	18	148103	1286	4387	31182206	1777	6064	148103	885	3020	31182206	1224	4175
	700	21	148107	1500	5119	31182207	2073	7075	148107	1033	3525	31182207	1428	4871
2000	400	12	148096	933	3185	31202204	1284	4380	148096	643	2193	31202204	884	3015
	500	15	-	-	-	31202205	1604	5474	-	-	-	31202205	1105	3769
	600	18	148104	1400	4777	31202206	1925	6569	148104	964	3289	31202206	1326	4523
	700	21	148108	1634	5574	31202207	2246	7664	148108	1125	3838	31202207	1547	5277
2200	300	9	-	-	-	31222203	1037	3537	-	-	-	31222203	714	2435
	400	12	148097	1014	3461	31222204	1382	4716	148097	698	2383	31222204	952	3247
	500	15	-	-	-	31222205	1728	5896	-	-	-	31222205	1190	4059
	600	18	148105	1521	5191	31222206	2073	7075	148105	1048	3574	31222206	1428	4871
	700	21	148109	1775	6057	-	-	-	148109	1222	4170	-	-	-

EN 442 Certification Data – CETIAT tested in accordance with BS EN 442

Type	P2			K2		
	1800	2000	2200	1800	2000	2200
Height	1800	2000	2200	1800	2000	2200
W/m at 75/65/20	2865	3120	3390	3690	3960	4230
n-coefficients	1.31	1.30	1.30	1.33	1.33	1.33
Heated Surface Area (m ² /m)	8.20	9.10	10.10	29.90	37.74	38.66
Weight (kg/m)	71.10	78.60	87.60	105.30	116.40	126.60
Water Contents (l/m)	16.20	18.00	20.10	15.90	17.70	20.10
Wall to tap centre (mm)	65	65	65	65	65	65

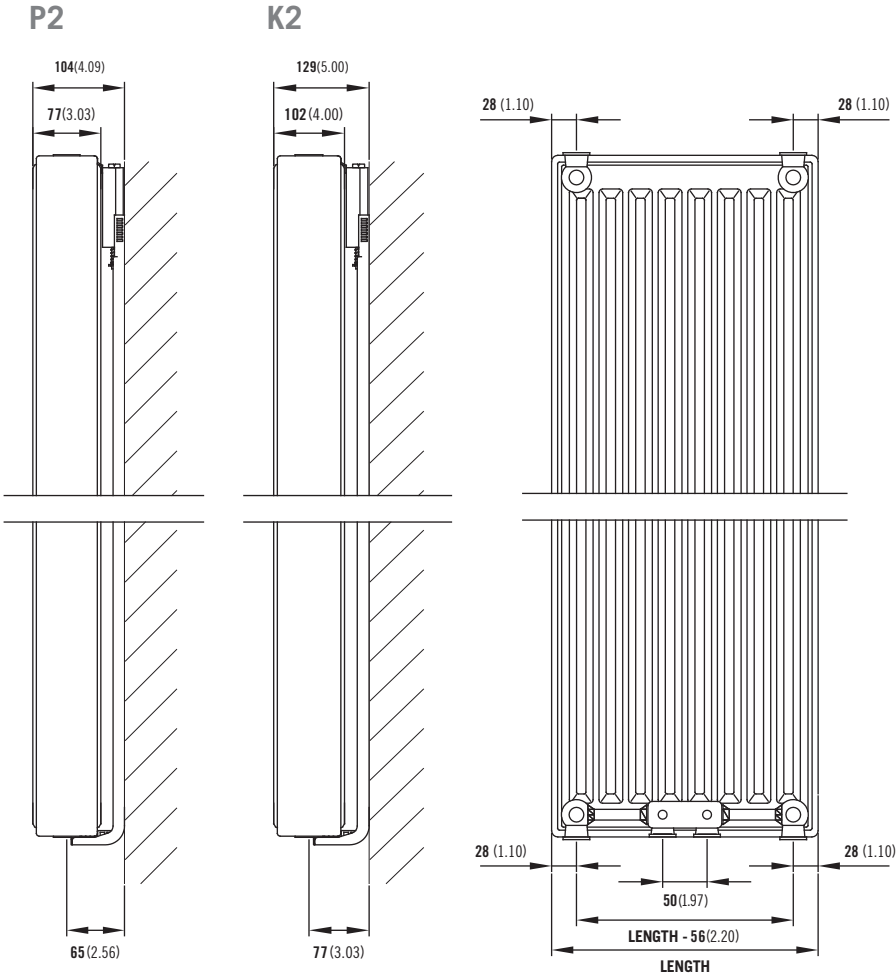
Compact Vertex mounting brackets

Height		H2		H3		H4	
mm	in	mm	in	mm	in	mm	in
1800	70.87	70	2.75	830	43.89	1590	63.58
2000	78.74	70	2.75	930	47.83	1790	71.46
2200	86.61	70	2.75	1030	51.77	1990	79.33



Compact Vertex wall mounting information

All dimensions in mm. Inches in brackets.



Comes complete with Stelrad's class leading safety bracket.